

CERTIFICATE OF ANALYSIS
 #199 / 19.05.2026

Name of product: Lavandula stoechas Oil
 Customer: Natural Heroes Europe EOOD
 Sample identification: LVS.26016.2992.0.0.S1661.T0
 Additional information: FL Lavandula Essential oil, Stoechas (Organic)
 Lot: MO 41620

Date of receipt: 14/05/2026
 Date of analysis: 19/05/2026
 Sample quantity: 20 g.
 Sampled by: client

Chromatographic profile

Parameter	Range according to company specification	Result
alpha-Pinene	-	5.21
1,8-Cineol	-	19.79
Fenchone	-	4.43
Camphor	-	12.69
Linalool	-	3.11
(E)-alpha-Necrodiyl acetate	-	13.88
Lavandulyl acetate	-	3.26
(Z)-alpha-Necrodiyl acetate	-	0.79
Arbozol	-	1.07
(E)-alpha-Necrodol	-	6.64
(Z)-alpha-Necrodol	-	1.00

Disclaimer: This report of analysis may not be modified in any way, or reproduced except in full, without written approval from Esseterre Bulgaria Ltd. The chromatographic profile is list of components selected as representative and characteristic components of an essential oil and does not determine the actual ratio of the components, but rather assesses their relative ratios. The analysis results refer only to the specific sample provided and do not constitute an opinion on the entire batch from which it was taken.

Attachment: Chromatographic file LVS.26016.2992.0.0.S1661.T0

Laboratory Manager: Daniela Radeva Georgieva



Product Quality Control: Teodora Georgieva Popova





Sample Information
 Analyzed by Esseterre Laboratory
 Sample Type: Essential Oil
 Sample Name: Lavandula stoechas
 Sample ID: LVS.26016.2992.0.0.S1661.T0
 Analyzed: 15.5.2026 11:31:01
 Injection Volume: 2 uL

System Configuration
 Column: 60mx0.25mmx0.25um
 Carrier Gas: He
 Stationary phase: PEG
 Oven temperature: 40 °C - 1 min; to 220 °C - 2°C/min

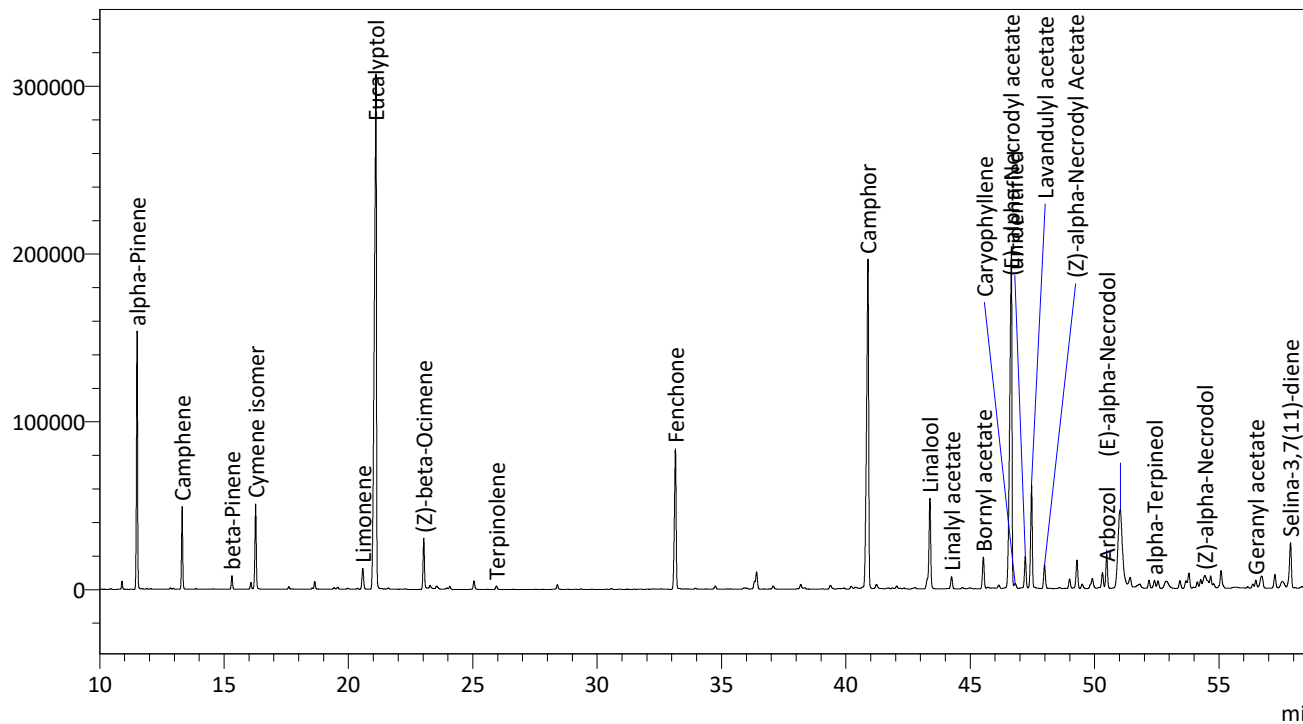
Detector: FID/MS
 Solution: 6% sol in CH₂Cl₂
 Split ratio: 1:200

Chromatogram
Lavandula stoechas

Intensity

FID1

ID#	Ret.Time	Name	Conc.	Units
1	11.503	alpha-Pinene	5.21	%
2	13.314	Camphene	1.75	%
3	15.315	beta-Pinene	0.32	%
4	16.268	Cymene isomer	2.11	%
5	20.577	Limonene	0.64	%
6	21.107	Eucalyptol	19.79	%
7	23.029	(Z)-beta-Ocimene	1.38	%
8	25.951	Terpinolene	0.10	%
9	33.147	Fenchone	4.43	%
10	40.887	Camphor	12.69	%
11	43.379	Linalool	3.11	%
12	44.251	Linalyl acetate	0.39	%
13	45.527	Bornyl acetate	1.00	%
14	46.655	(E)-alpha-Necrodiyl acetate	13.88	%
15	46.807	Caryophyllene	0.21	%
16	47.212	unidentified	1.02	%
17	47.467	Lavandulyl acetate	3.26	%
18	47.986	(Z)-alpha-Necrodiyl Acetate	0.79	%
19	50.487	Arbozol	1.07	%
20	51.036	(E)-alpha-Necrodol	6.64	%
21	52.409	alpha-Terpineol	0.31	%
22	54.433	(Z)-alpha-Necrodol	1.00	%
23	56.484	Geranyl acetate	0.27	%
24	57.877	Selina-3,7(11)-diene	1.74	%
25	81.506	alpha-Cadinol	1.06	%



Percentages are calculated from GC/FID peaks areas without using corrections factors;
 Components are identified by a combination of Rt (Esseterre database) and mass spectra
 libraries (242k compounds).

GAS CHROMATOGRAPHIC ANALYSIS

Method : Analysis of the composition of an essential oil or other volatile liquide by GC-FID

Results : See analysis summary

Date : 15-05-2026

Product: FL Lavandula Essential oil, Stoechas

Lot: MO 41620

Report prepared for: Natural Heroes Europe EOOD

Internal code: LVS.26016.2992.0.0.S1661.T0

FULL ANALYSIS DATA

Column WAX

Ret. Time	Name	Area	Unit
10.894	Tricyclene	0.157	%
11.503	alpha-Pinene	5.213	%
13.314	Camphene	1.754	%
15.315	beta-Pinene	0.315	%
16.079	Sabinene	0.156	%
16.268	Cymene isomer	2.106	%
17.604	3-Carene	0.062	%
18.644	beta-Myrcene	0.186	%
19.570	unidentified	0.058	%
20.577	Limonene	0.639	%
21.107	Eucalyptol	19.786	%
23.029	(Z)-beta-Ocimene	1.376	%
23.283	unidentified	0.189	%
23.546	gamma-Terpinene	0.163	%
24.073	(E)-beta-Ocimene	0.092	%
25.048	p-Cymene	0.248	%
25.951	Terpinolene	0.102	%
28.397	2,2,3,4-Tetramethyl-3-cyclopenten-1-one	0.144	%
33.147	Fenchone	4.430	%
34.750	unidentified	0.112	%
36.327	cis-Linalool oxide (furanoid)	0.212	%
36.410	unidentified	0.551	%
37.081	unidentified	0.123	%
38.186	trans-Linalool oxide (furanoid)	0.169	%
39.381	unknown	0.159	%
39.381	unknown	0.159	%
40.217	alpha-Copaene	0.111	%
40.887	Camphor	12.685	%
41.228	unidentified	0.209	%
43.379	Linalool	3.114	%

Ret. Time	Name	Area	Unit
44.251	Linalyl acetate	0.392	%
45.527	Bornyl acetate	1.000	%
46.655	trans-alpha-Necroeryl acetate	13.877	%
46.807	Caryophyllene	0.212	%
47.212	unidentified	1.021	%
47.467	Lavandulyl acetate	3.261	%
47.986	cis-a-Necroeryl Acetate	0.788	%
48.995	unidentified	0.327	%
49.291	unidentified	0.981	%
49.501	unidentified	0.163	%
49.907	unidentified	0.494	%
50.316	unidentified	0.543	%
50.487	Arbozol	1.069	%
51.036	trans-alpha-Necrodol	6.640	%
51.430	unidentified	0.582	%
51.816	alpha-Acoradiene	0.375	%
52.187	Myrtenyl acetate	0.271	%
52.409	alpha-Terpineol	0.310	%
52.550	Verbenone	0.265	%
52.881	Borneol	0.602	%
54.433	cis-alpha-Necrodol	0.995	%
54.667	Neryl acetate	0.438	%
54.785	unidentified	0.172	%
55.085	(E)-alpha-Bisabolene	0.713	%
56.484	Geranyl acetate	0.269	%
56.724	gamma.-Cadinene	0.671	%
57.251	alpha-Gurgujene	0.498	%
57.877	Selina-3,7(11)-diene	1.742	%
58.650	alpha-Cadinene	0.259	%
60.769	trans-Calamenene	0.159	%
61.169	m-Cymen-8-ol	0.144	%
72.930	Epicubenol	0.149	%
74.186	Viridiflorol	0.132	%
81.506	alpha-Cadinol	1.060	%
Total		95.19	%

ALLERGENS according Regulation 1223/2009

The compounds detected below 0.05% of total signal are not present.