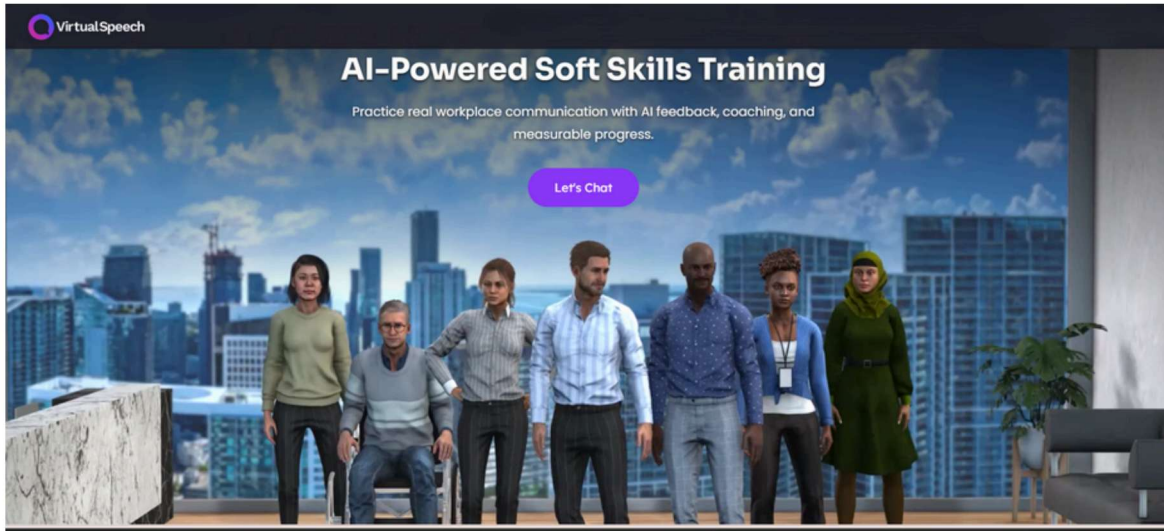


VR ROLE PLAYS

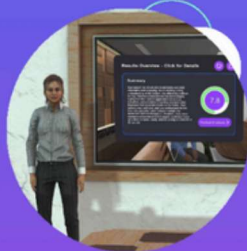


This training guide is for use with the Virtual Speech App and features AI driven roleplays such as job interviews with pre-set questions, job interviews based on uploaded files, presentations, and open conversations



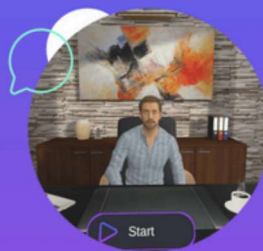
1. Practice what you learn

Use a combination of courses and practice exercises to build essential workplace skills online or in VR/MR.



2. Get instant feedback

Receive instant feedback after each practice session so you can easily identify areas to improve.



3. Reflect with an AI Coach

Engage in a two-way dialogue to unpack your feedback, identify weaknesses, and plan next steps.



4. Apply in real life

Use your skills in everyday work situations with confidence.

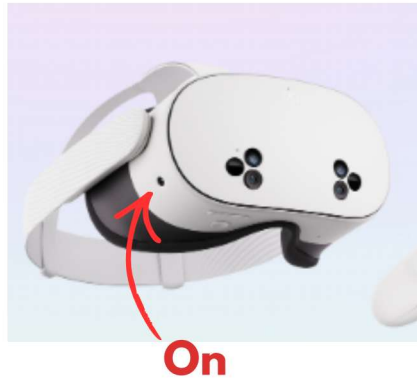
Image sources: virtualspeech.com

TRAINING GUIDE

For use with Virtual Speech
ALL ROLE PLAYS

To Open the Virtual Speech App

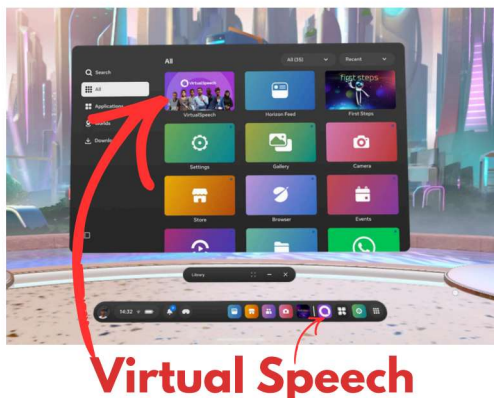
Turn the VR unit on by pressing the small round button on the left side of the headset, near the strap.



Press the Meta button on the right controller to open the menu.



There may be a link to Virtual Speech on the bottom bar or select it from the main Horizon menu of Apps. If you cannot see it, press the App button (9 dots).



This is a training guide for the use of Virtual Speech App. Please read the pages on the use of VR and Health & Safety Presentation for more details.

You can use up to 10 pre-set questions. Only VR Admins can upload the questions for use on the VR Units.

Demo Video

<https://youtu.be/vxcMk7xGlvw>

or use QR code below



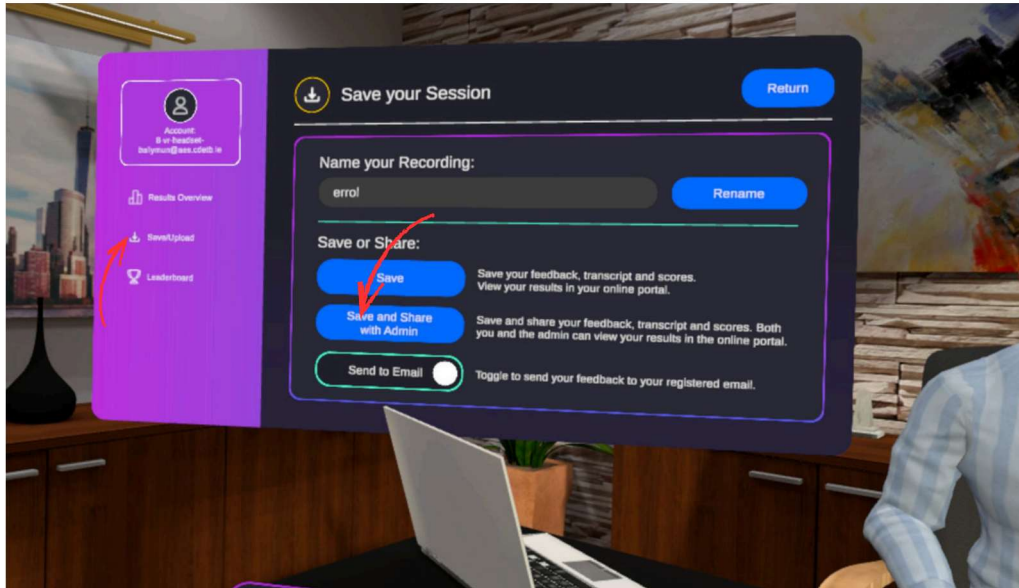
City of Dublin
FET College
Ballymun Rd

BJC
BALLYMUN
JOB CENTRE
Building a Brighter Future With Work

TRAINING GUIDE

For use with Virtual Speech
ALL ROLE PLAYS

To Upload Results and Feedback



This is a training guide for the use of Virtual Speech App. Please read the pages on the use of VR and Health & Safety Presentation for more details.

You can use up to 10 pre-set questions. Only VR Admins can upload the questions for use on the VR Units.

The user can read the results on the headset. If you choose to give them a copy OR download the audio as digital evidence for QQI, you must follow these instructions.

1. Use the End button to stop the coaching session.
2. On the left panel select “Save”.
3. In the centre panel, select “Save and Share with Admin”.
4. A tab will open saying “Uploading” and a progress bar showing the percentage of the file uploaded.
5. Don’t close the app until this is complete and the “Save” button on the left panel turns grey.
6. Contact one of the Admin to email the documents or the audio files to you.

Demo Video

<https://youtu.be/vxcMk7xGIvw>

or use QR code below



City of Dublin
FET College
Ballymun Rd

B.J.C.
**BALLYMUN
JOB CENTRE**
Building a Brighter Future With Work

TRAINING GUIDE

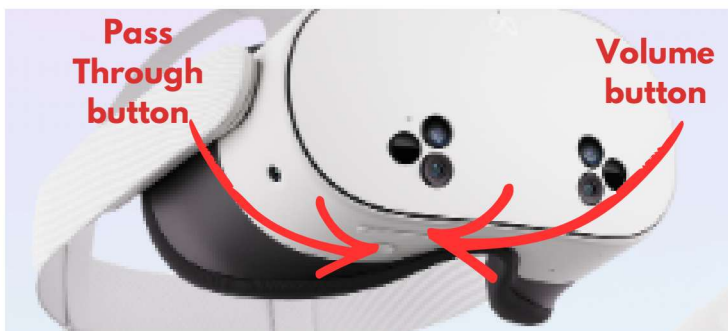
For use with Virtual Speech
ALL ROLE PLAYS

Problem Solving Page 1

If the student presses the Meta button on top of the controller, they will pause the App and this screen will open. Press “Resume” and the roleplay will restart at the same place.



The user can accidentally press the “Passthrough” button while adjusting the headset, which will bring them out of VR. Ask the user if they can see your face when you are standing in front of them. They will always be able to partially see you below the headset, but if they can see your face, press the round button below the headset.



The volume is controlled by the long button under the headset, and beside the pass-through button. This is operated the same way as a phone volume. Encourage users to set this to the minimal volume possible, to minimise the distractions for other students.



This is a training guide for the use of Virtual Speech App. Please read the pages on the use of VR and Health & Safety Presentation for more details.

You can use up to 10 pre-set questions. Only VR Admins can upload the questions for use on the VR Units.

Demo Video

<https://youtu.be/vxcMk7xGIvw>

or use QR code below



City of Dublin
FET College
Ballymun Rd

BJC
BALLYMUN
JOB CENTRE
Building a Brighter Future With Work

TRAINING GUIDE

For use with Virtual Speech

ALL ROLE PLAYS

Problem Solving Page 2

The hand controllers usually run out of battery before the headset. If pressing the trigger button does not select a button, try the left-hand controller (it is usually used less often). If this does not work and using another headset is not possible, there are spare batteries in each of the headset bags. These are not rechargeable so please change back to the battery pack after use.



If you have entered the wrong roleplay or the wrong scene, it is easiest to use the “Home” button to go back to the main Virtual Speech menu and change the settings here.



Home



This is a training guide for the use of Virtual Speech App. Please read the pages on the use of VR and Health & Safety Presentation for more details.

You can use up to 10 pre-set questions. Only VR Admins can upload the questions for use on the VR Units.

Demo Video

<https://youtu.be/vxcMk7xGIvw>

or use QR code below



City of Dublin
FET College
Ballymun Rd

BJC
BALLYMUN
JOB CENTRE
Building a Brighter Future With Work

TRAINING GUIDE

For use with Virtual Speech

INTERVIEW WITH SET QUESTIONS

INTERVIEW WITH SET QUESTIONS



This is a good roleplay for short interviews with pre-set questions. You can use files which have already been uploaded, or the tutor can set their own questions.

You can use up to 10 pre-set questions.

Only the VR Admins can upload question files, so this needs to be done before-hand. Send the questions in MS Word format, if possible.

The questions will be asked in a random order. The avatar will react to the user's answers, maybe asking for clarification. The user can ask the avatar to repeat or rephrase a question.

Depending on the group size and time available, the tutor can follow these instructions to set each unit up or give the students the instructions to do it themselves.

If you require audio for digital evidence, please read the page on uploading results.



This is a training guide for the use of Virtual Speech App. Please read the pages on the use of VR and Health & Safety Presentation for more details.

You can use up to 10 pre-set questions. Only VR Admins can upload the questions for use on the VR Units.

Demo Video

<https://youtu.be/vxcMk7xGIvw>

or use QR code below



City of Dublin
FET College
Ballymun Rd

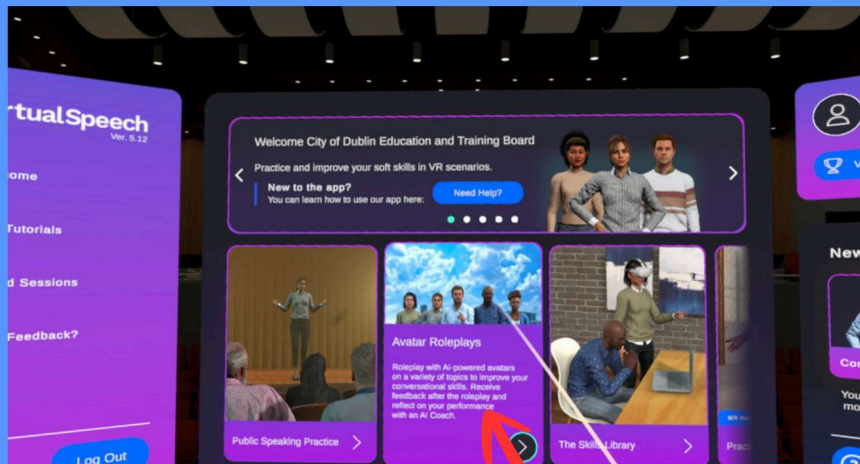
BJC
BALLYMUN
JOB CENTRE
Building a Brighter Future With Work

TRAINING GUIDE

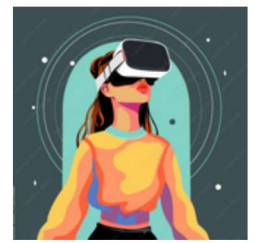
For use with Virtual Speech
INTERVIEW WITH SET QUESTIONS

Step 1: Begin

STEP 01



- Choose “Avatar Roleplay” from the middle panel.
- Use the hand controller to scroll left or right if you don’t see it immediately.
- Use the trigger button (index finger) to make changes.
- Do not press any of the buttons on the top of the controller.
- If you have any problems, turn to the last page over for problem solving hints.



This is a training guide for the use of Virtual Speech App. Please read the pages on the use of VR and Health & Safety Presentation for more details.

You can use up to 10 pre-set questions. Only VR Admins can upload the questions for use on the VR Units.

Demo Video

<https://youtu.be/vxcMk7xGlvw>

or use QR code below



City of Dublin
FET College
Ballymun Rd

B.J.C.
BALLYMUN
JOB CENTRE
Building a Brighter Future With Work

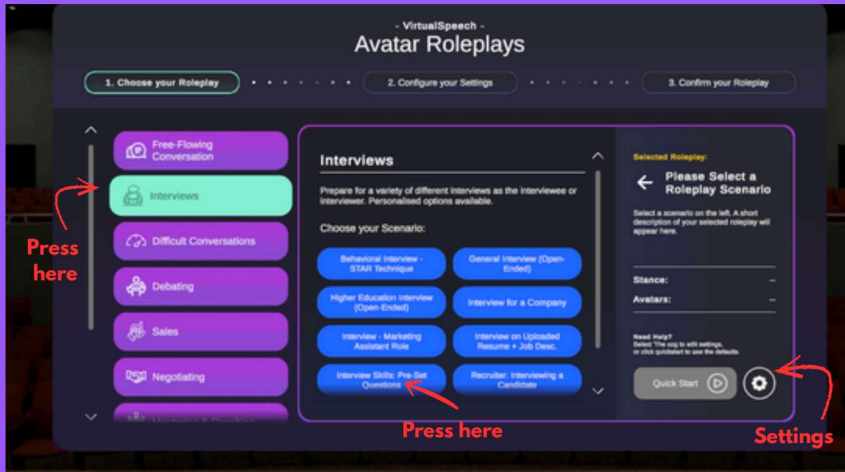
TRAINING GUIDE

For use with Virtual Speech INTERVIEW WITH SET QUESTIONS



Step 2: Start Role-Play

STEP 02



- Choose “Interviews” from the left-hand panel.
- The middle panel then opens with options.
- Choose “Pre-set Questions”.
- Click on the settings button, which is at the bottom, on the right-hand panel, to choose the questions and other settings.

This is a training guide for the use of Virtual Speech App. Please read the pages on the use of VR and Health & Safety Presentation for more details.

You can use up to 10 pre-set questions. Only VR Admins can upload the questions for use on the VR Units.

Demo Video

<https://youtu.be/vxcMk7xGlvw>

or use QR code below



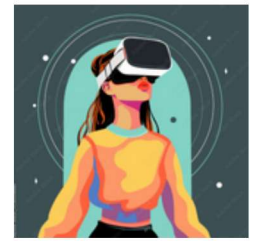
City of Dublin
FET College
Ballymun Rd

BJC
BALLYMUN
JOB CENTRE
Building a Brighter Future With Work

TRAINING GUIDE

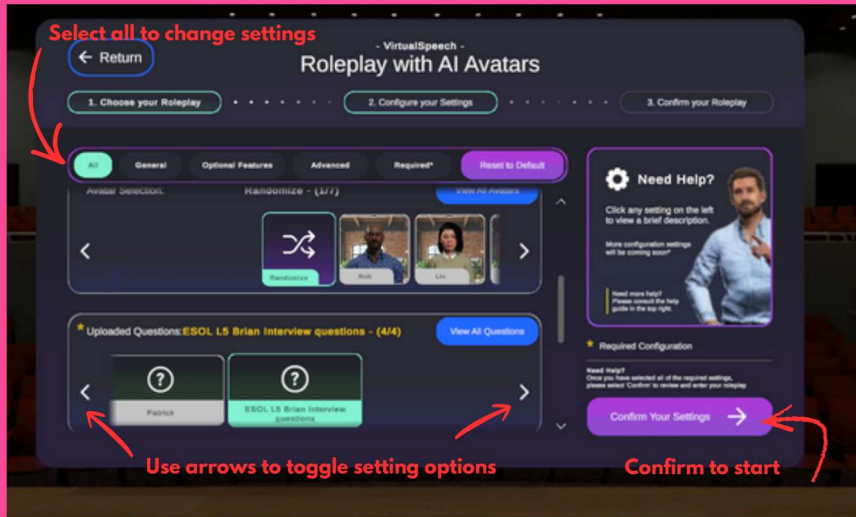
For use with Virtual Speech

INTERVIEW WITH SET QUESTIONS



Step 3: Start Role-Play

STEP 03



Select “All” to change settings.

- Name - use first name only.
- Scene - the office works best.
- Avatar - own choice or random.
- Input type - choose “Realtime”.
- Language Level - CEFR B1-B2 is suitable for ESOL and Literacy students.
- Uploaded questions - choose an existing file or your own questions (VR admin need to input these beforehand).

This is a training guide for the use of Virtual Speech App. Please read the pages on the use of VR and Health & Safety Presentation for more details.

You can use up to 10 pre-set questions. Only VR Admins can upload the questions for use on the VR Units.

Demo Video

<https://youtu.be/vxcMk7xGlvw>

or use QR code below

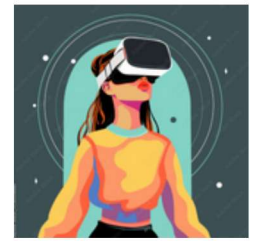


City of Dublin
FET College
Ballymun Rd

BJC
BALLYMUN
JOB CENTRE
Building a Brighter Future With Work

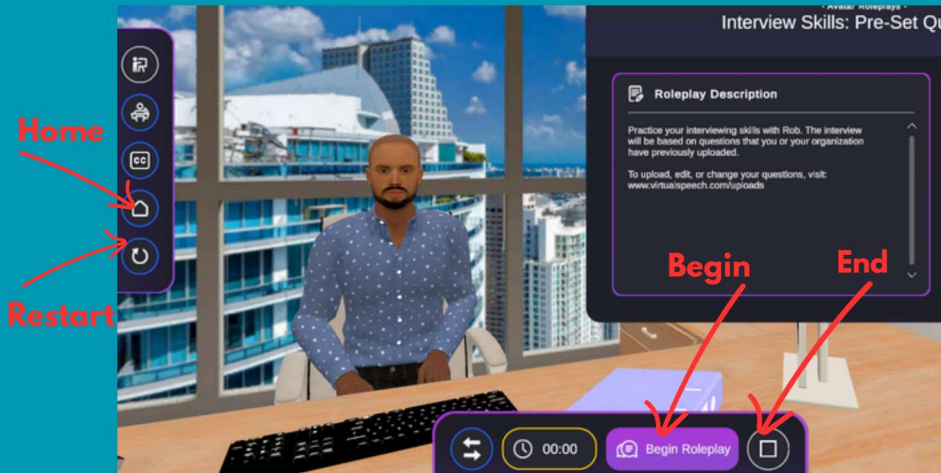
TRAINING GUIDE

For use with Virtual Speech INTERVIEW WITH SET QUESTIONS



Step 4: Begin RolePlay

STEP 04



- Give the headset to the student unless they are using these instructions to setup the roleplay themselves.
- The pink button at the bottom starts the roleplay.
- The “CC” button gives subtitles of the questions. This is optional.
- “Home” - click this button to change the roleplay settings.
- “Restart” begins this roleplay again.
- “End” - finishes the roleplay and brings you to the feedback coaching session.

This is a training guide for the use of Virtual Speech App. Please read the pages on the use of VR and Health & Safety Presentation for more details.

You can use up to 10 pre-set questions. Only VR Admins can upload the questions for use on the VR Units.

Demo Video

<https://youtu.be/vxcMk7xGlvw>

or use QR code below



City of Dublin
FET College
Ballymun Rd

B.J.C.
**BALLYMUN
JOB CENTRE**
Building a Brighter Future With Work

TRAINING GUIDE

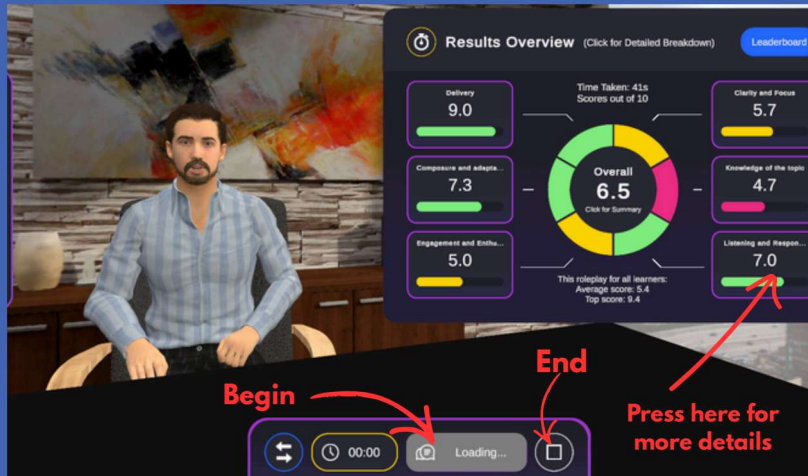
For use with Virtual Speech

INTERVIEW WITH SET QUESTIONS



Step 5: Feedback

STEP 05



- The user will see their results.
- Move the pointer over the charts to see more detail.
- Start the coaching session by clicking on the “Begin” button once it has turned pink.
- Press the “End” button to finish the coaching session.
- If you need to print the feedback, or if you need the audio file, you must “Save and Share” the file with Admin. Check the page on uploading files.
- Use the “Exit” button. DO NOT USE the “Log Out” button. If you accidentally do this, please tell one of the VR admins.

This is a training guide for the use of Virtual Speech App. Please read the pages on the use of VR and Health & Safety Presentation for more details.

You can use up to 10 pre-set questions. Only VR Admins can upload the questions for use on the VR Units.

Demo Video

<https://youtu.be/vxcMk7xGlvw>

or use QR code below



City of Dublin
FET College
Ballymun Rd

BJC
BALLYMUN
JOB CENTRE
Building a Brighter Future With Work

QUICK GUIDE

For use with Virtual Speech INTERVIEW WITH SET QUESTIONS



This is a quick guide for reference in class. Please read the Training Guide and Health & Safety Presentation for more details

You can use up to 10 pre-set questions. Only VR Admins can upload the questions for use on the VR Units.

Demo Video

<https://youtu.be/vxcMk7xGlvw>

or use QR code below



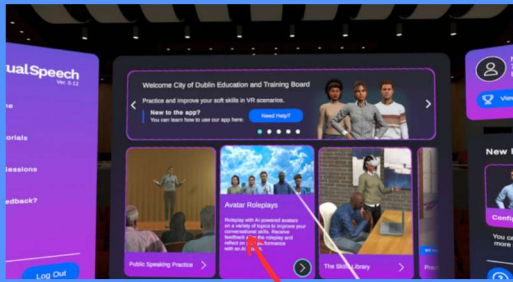
City of Dublin
FET College
Ballymun Rd



STEP 01

BEGIN

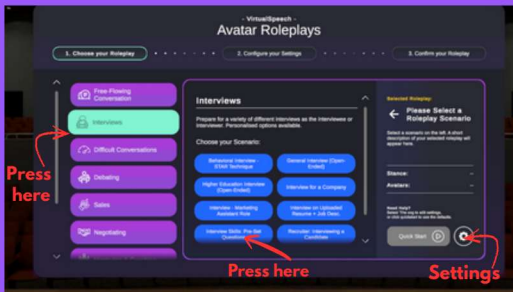
Choose Avatar Roleplay from the middle panel. Use the hand controller to scroll left or right if you don't see it immediately. Use the trigger button (index finger) to make changes. Don't press any of the buttons on the top of the controller. If you have any problems, turn page over for problem solving hints.



STEP 02

START ROLEPLAY

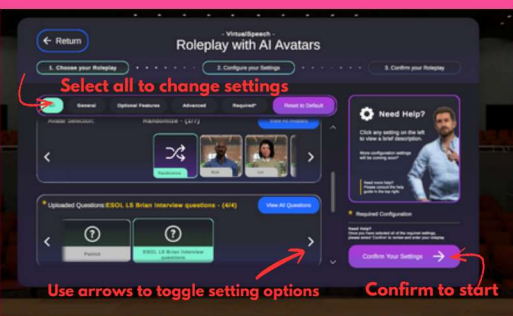
Choose Interviews from the right-hand panel. The middle panel then opens with options. Choose Pre-set Questions. Click on the settings button, which is at the bottom on the right hand side, to choose the questions and other settings



STEP 03

SETTINGS

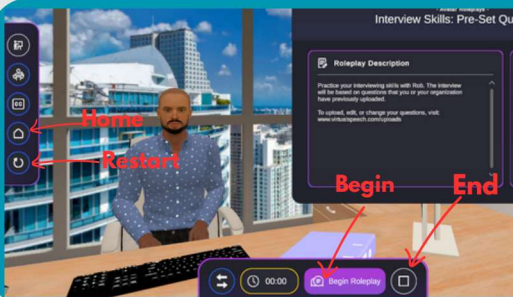
Select "All" to change settings. Name - use first name only. Scene - the office works best. Avatar - own choice or random. Input type - choose Realtime. Language Level - B1-B2 is suitable for most of our students. Uploaded questions - choose an existing file or your own questions (VR admin need to input these before use).



STEP 04

BEGIN ROLEPLAY

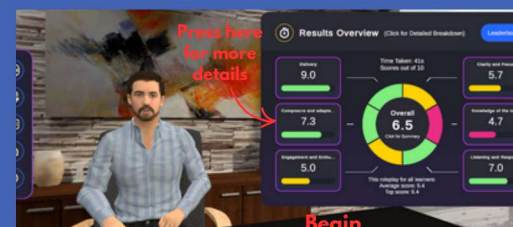
Give the headset to the student, unless they are using these instructions to set up the roleplay themselves. The pink button at the bottom starts the roleplay. The "CC" button gives subtitles. Use "Home" if you need to change the roleplay settings. "Restart" begins this roleplay again and "End" finishes the talk.



STEP 05

FEEDBACK

The user will see their results. Move the pointer over the charts to see more detail. Start the coaching session once the Begin button has turned pink. They press the End button to finish. Turn over for instructions to save the results and share them with the Feedback Report.



INTERVIEW WITH SET QUESTIONS • TRAINING GUIDE

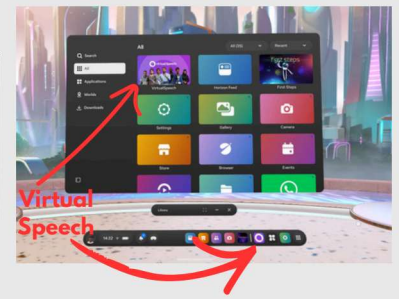
This is a good roleplay for short interviews with pre-set questions. You can use files which have been loaded or the tutor can set their own questions. Only the VR Admins can upload question files, so this needs to be done beforehand. The questions will be asked in a random order. The Avatar will react to the user's answers, maybe asking for clarification.

Depending on the group size and time available, the tutor can follow these instructions to set up each unit or give the students the instructions to do it themselves. If you require audio for digital evidence, please read the note below or the section on uploading results.

Read the separate instructions leaflet on charging and cleaning the headsets if you are new to VR.

To Open the Virtual Speech App

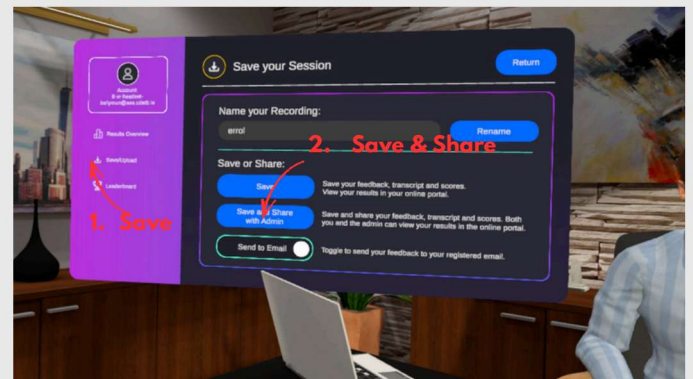
Press the Meta button on the right controller. There may be a link to Virtual Speech on the bottom bar or it can be selected from the main Horizon menu of Apps. Follow steps on the back to set up your roleplay.



To Upload Results and Feedback

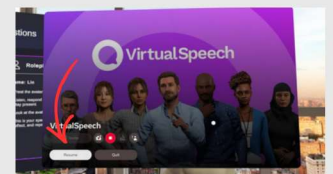
The user can read the results on the headset. If you want to give them a copy OR to download the audio as digital evidence for QQI, you must follow these instructions.

- Use the End button to stop the coaching session.
- On the left panel select "Save" and then "Save and Share with Admin".
- Do not close the app until this is complete - the "Save" button will turn grey
- Contact one of the Admin to email the documents to you.



Problem Solving

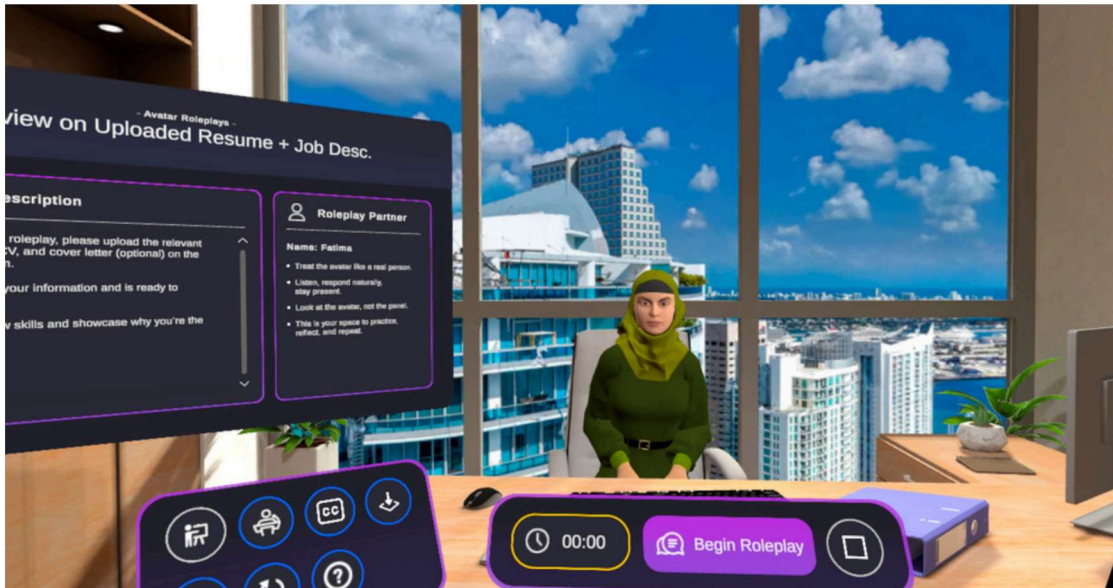
1. If the student presses the Meta button on top of the controller, they will pause the App and this screen will open. Press "Resume" and the roleplay will restart at the same place.
2. The hand controllers usually run out of battery before the headset. If pressing the trigger button does not select a button, try the left-hand (it is usually used less). If this does not work and using another headset is not possible, there are spare batteries in each of the headset bags. These are not rechargeable so please change back to the battery pack after use. Tell one of the VR Admins if you needed to do this.
3. The user can accidentally press the Passthrough button while adjusting the headset, which will bring them out of VR. Ask the user if they can see your face. They will always be able to partially see you below the headset but if they can see your face, press the round button below the headset. The long button beside this, adjusts volume.
4. If you have entered the wrong roleplay or the wrong scene, it is easiest to use the Home button to go back to the main Virtual Speech menu and change the settings here.



TRAINING GUIDE

For use with Virtual Speech INTERVIEW WITH UPLOADED FILES

INTERVIEW WITH UPLOADED FILES



This is a good roleplay for job preparation courses, as a follow-up after previous interview practice.

You can use CV or Job Spec or both. The questions will be generated from the files.

The CV is uploaded as a pdf file, while the job details are copied and pasted, so this can be provided in a Word doc or web page.

Contact details and surname should be removed or blanked out from the CV before uploading.

Only the VR Admins can upload the files so this needs to be done beforehand.

Depending on the group size and time available, the tutor can follow these instructions to set up each unit or give the students the instructions to do it themselves.

Read pages 2-5 of this training manual for general instructions, including details on how to save files and problem solving tips.

Read the separate instructions leaflet on charging and



This is a training guide for the use of Virtual Speech App. Please read the pages on the use of VR and Health & Safety Presentation for more details.

Interview based on uploaded CV or Job specification

Demo Video

<https://youtu.be/vxcMk7xGlvw>

or use QR code below

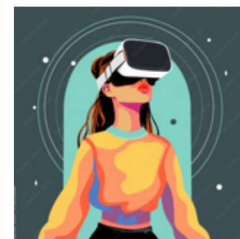


City of Dublin
FET College
Ballymun Rd

BJC
BALLYMUN
JOB CENTRE
Building a Brighter Future With Work

TRAINING GUIDE

For use with Virtual Speech INTERVIEW WITH UPLOADED FILES



This is a training guide for the use of Virtual Speech App. Please read the pages on the use of VR and Health & Safety Presentation for more details.

The interview questions will be based on uploaded CV or job specification

Demo Video

<https://youtu.be/vxcMk7xGlvw>

or use QR code below

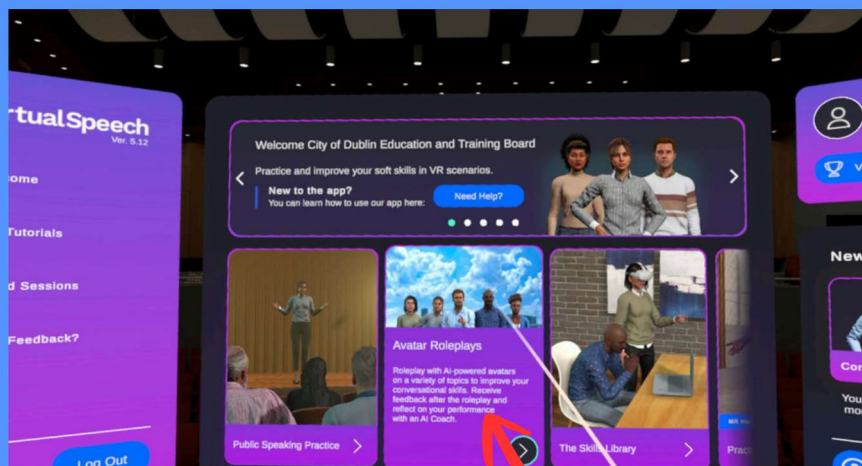


City of Dublin
FET College
Ballymun Rd

BJC
**BALLYMUN
JOB CENTRE**
Building a Brighter Future With Work

Step 1: Begin

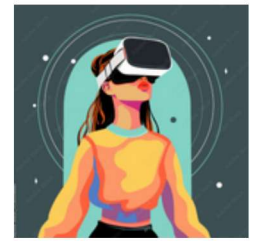
STEP 01



- Choose “Avatar Roleplay” from the middle panel.
- Use the hand controller to scroll left or right if you don’t see it immediately.
- Use the trigger button (index finger) to make changes.
- Don’t press any of the buttons on the top of the controller.
- If you have any problems, turn to page 4-5 for problem solving tips.

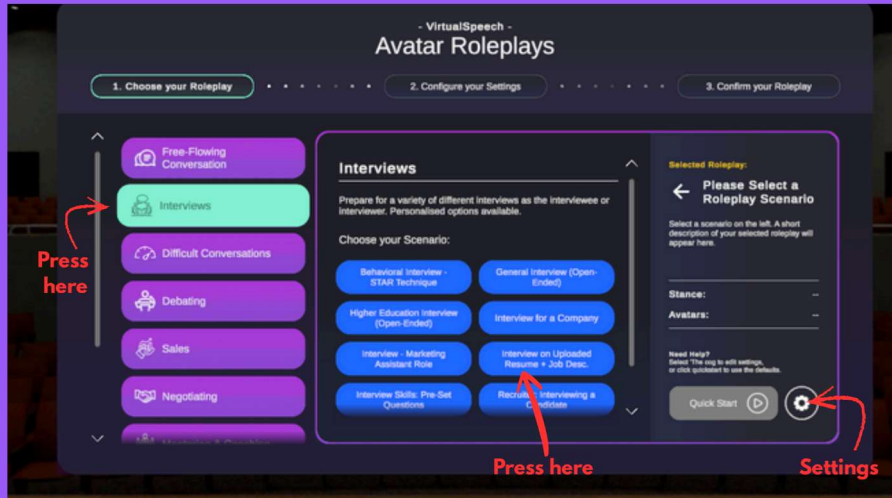
TRAINING GUIDE

For use with Virtual Speech INTERVIEW WITH UPLOADED FILES



Step 2: Start Role-Play

STEP 02



This is a training guide for the use of Virtual Speech App. Please read the pages on the use of VR and Health & Safety Presentation for more details.

The interview questions will be based on uploaded CV or job specification

- Choose “Interviews” from the left-hand panel.
- The middle panel then opens with options. Choose “Uploaded Resume”.
- Click on the settings button, which is at the bottom, on the right-hand side, to choose the CV and/or job specification.
- Questions will be generated based on the CV and/or job.

Demo Video

<https://youtu.be/vxcMk7xGlvw>

or use QR code below



City of Dublin
FET College
Ballymun Rd

BJC
BALLYMUN
JOB CENTRE
Building a Brighter Future With Work

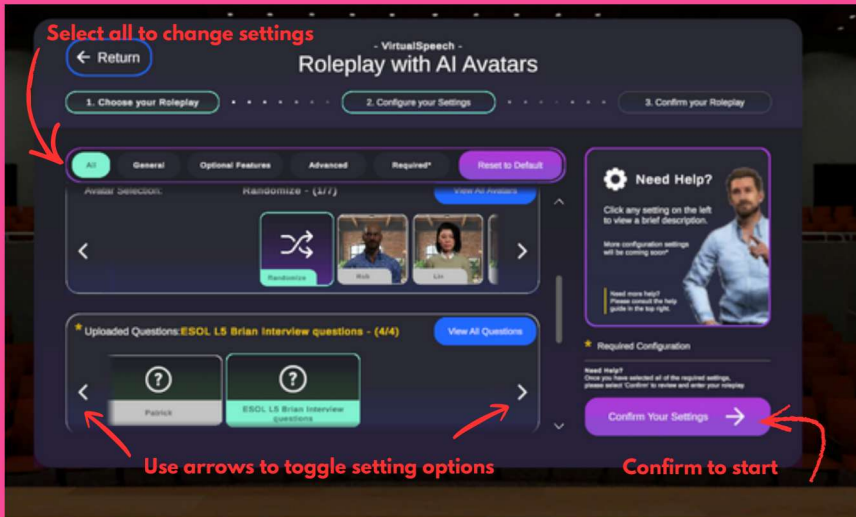
TRAINING GUIDE

For use with Virtual Speech INTERVIEW WITH UPLOADED FILES



Step 3: Start Role-Play

STEP 03



Select “All” to change settings.

- Name - use first name only.
- Scene - the office works best.
- Avatar - own choice or random.
- Input type - choose “Realtime”.
- Language Level - CEFR B1-B2 is suitable for ESOL and Literacy students.
- Uploaded CVs/Job - select the user’s pre-loaded file.

This is a training guide for the use of Virtual Speech App. Please read the pages on the use of VR and Health & Safety Presentation for more details.

The interview questions will be based on uploaded CV or job specification

Demo Video

<https://youtu.be/vxcMk7xGlvw>

or use QR code below



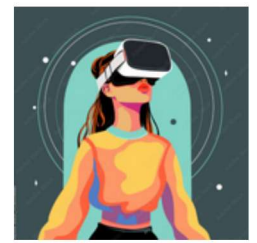
City of Dublin
FET College
Ballymun Rd

BJC
BALLYMUN
JOB CENTRE
Building a Brighter Future With Work

TRAINING GUIDE

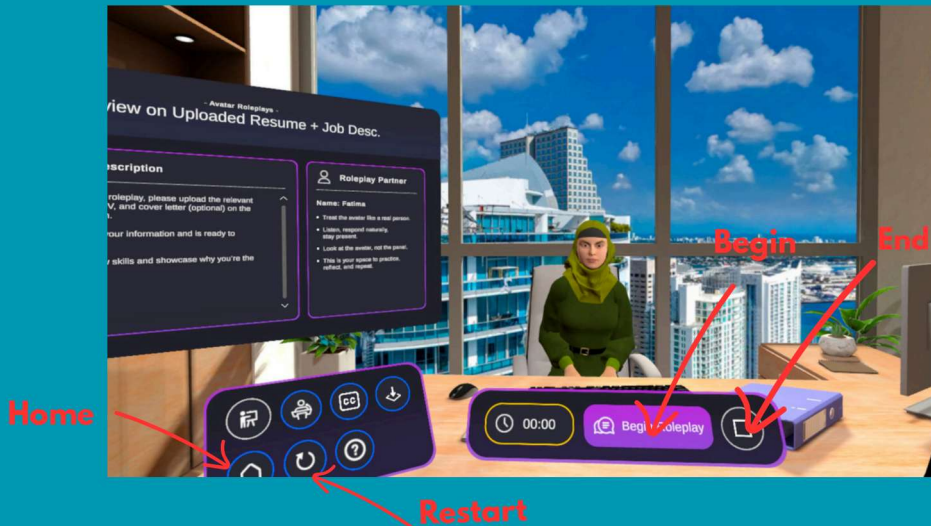
For use with Virtual Speech

INTERVIEW WITH UPLOADED FILES



Step 4: Begin RolePlay

STEP 04



- Give the headset to the student, unless they are using these instructions to set up the roleplay themselves.
- The pink button at the bottom starts the roleplay.
- The “CC” button gives subtitles of the questions. This is optional.
- Click the “Home” button to change the roleplay settings.
- “Restart” begins this roleplay again.
- “End” finishes the roleplay and brings you to the feedback coaching session.

This is a training guide for the use of Virtual Speech App. Please read the pages on the use of VR and Health & Safety Presentation for more details.

The interview questions will be based on uploaded CV or job specification

Demo Video

<https://youtu.be/vxcMk7xGIvw>

or use QR code below



City of Dublin
FET College
Ballymun Rd

BJC
BALLYMUN
JOB CENTRE
Building a Brighter Future With Work

TRAINING GUIDE

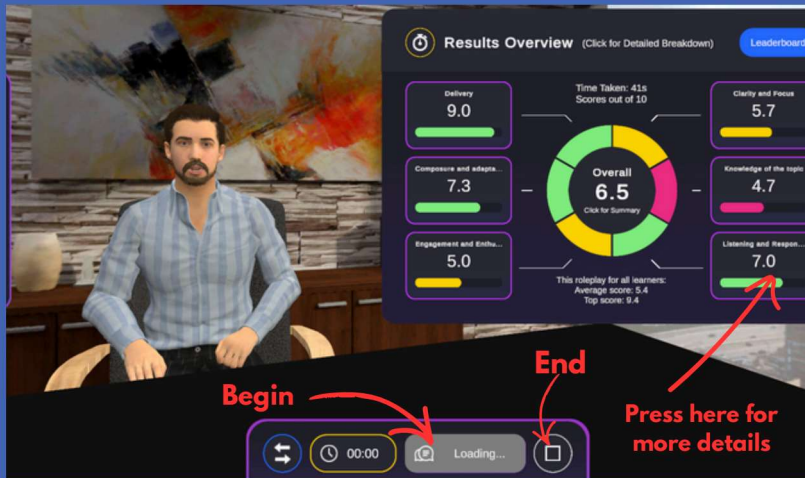
For use with Virtual Speech

INTERVIEW WITH UPLOADED FILES



Step 5: Feedback

STEP 05



- The user will see their results.
- Move the pointer over the charts to see more detail.
- Start the coaching session by clicking on the “Begin” button once it has turned pink.
- Press the “End” button to finish the coaching session.
- If you need to print the feedback, or if you need the audio file, you must “Save and Share” the file with Admin. Check the page on Uploading files.
- Use the “Exit” button. DO NOT USE the “Log Out” button. If you accidentally do this, please tell one of the VR admins.

This is a training guide for the use of Virtual Speech App. Please read the pages on the use of VR and Health & Safety Presentation for more details.

The interview questions will be based on uploaded CV or job specification

Demo Video

<https://youtu.be/vxcMk7xGlvw>

or use QR code below



City of Dublin
FET College
Ballymun Rd

BJC
BALLYMUN
JOB CENTRE
Building a Brighter Future With Work

QUICK GUIDE

For use with Virtual Speech INTERVIEW WITH UPLOADED FILES



This is a quick guide for reference in class. Please read the Training Guide and Health & Safety Presentation for more details

The interview question will be based on uploaded job specification or CV

Demo Video

<https://youtu.be/vxcMk7xGlvw>

or use QR code below



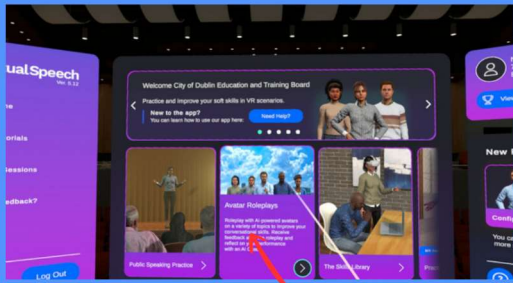
City of Dublin
FET College
Ballymun Rd



STEP 01

BEGIN

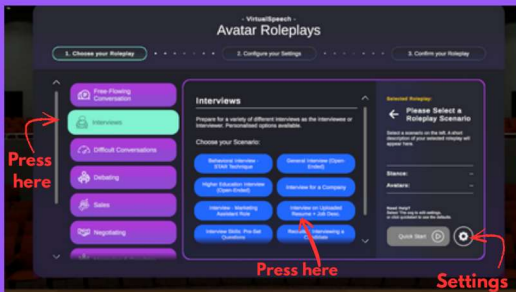
Choose Avatar Roleplay from the middle panel. Use the hand controller to scroll left or right if you don't see it immediately. Use the trigger button (index finger) to make changes. Do not press any of the buttons on the top of the controller. If you have any problems, turn page over for problem solving hints.



STEP 02

START ROLEPLAY

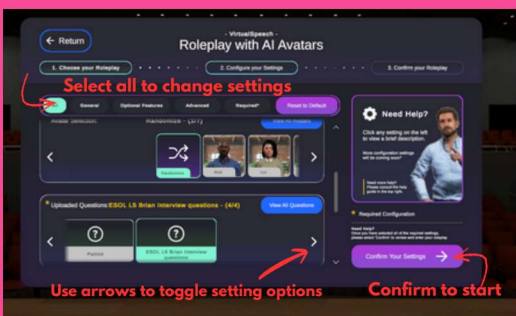
Choose Interviews from the right-hand panel. The middle panel then opens with options. Choose Uploaded Resume & Job details. Click on the settings button, which is at the bottom on the right hand side, to choose the questions and other settings.



STEP 03

SETTINGS

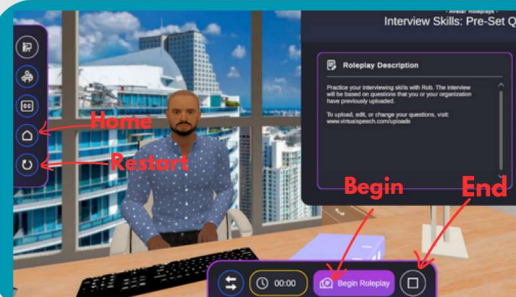
Select All to change settings. Name - use first name only. Scene - the office works best. Avatar - own choice or random. Input type - choose Realtime. Language Level - B1-B2 is suitable for most of our students. Uploaded questions - choose an existing file or your own questions (VR admin need to input these before use).



STEP 04

BEGIN ROLEPLAY

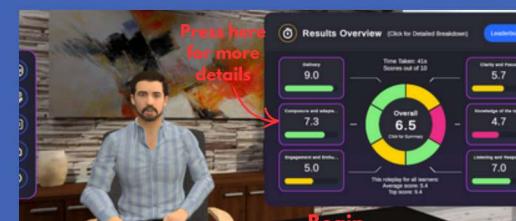
Give the headset to the student, unless they are using these instructions to set up the roleplay themselves. The pink button at the bottom starts the roleplay. The "CC" button gives subtitles. Use "Home" if you need to change the roleplay settings. "Restart" begins this roleplay again and "End" finishes the talk.



STEP 05

FEEDBACK

The user will see their results. Move the pointer over the charts to see more detail. Start the coaching session once the Begin button has turned pink. Press the End button to finish. Turn over for instructions to save the results and start the coaching session.



FREE-FLOWING CONVERSATION

QUICK GUIDE

This is a roleplay to introduction to speaking on VR and to practice public speaking.

The user chooses the topic and the avatar responds by asking questions. A good topic is anything the user is interested in and is comfortable talking about. Topics that work well are countries or cities, hobbies, football clubs, movies, comic books, or world affairs.

Depending on the number of students, the course, and the time available, the tutor can decide to use this manual to set up the roleplay or give it to the student to do this.

Continue the roleplay for 10-15 minutes. You can then go into the feedback stage.

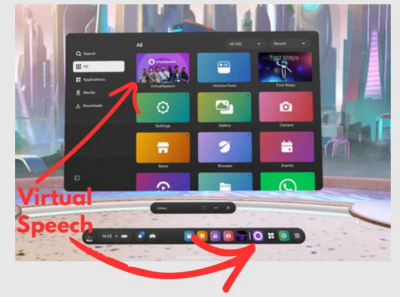
Read pages 2-5 for general instructions and problem solving tips. Read the separate instructions leaflet on charging and cleaning the headsets if you are new to VR.

To Open the Virtual Speech App

Press the Meta button on the right controller.

There may be a link to Virtual Speech on the bottom bar or it can be selected from the main Horizon menu of Apps.

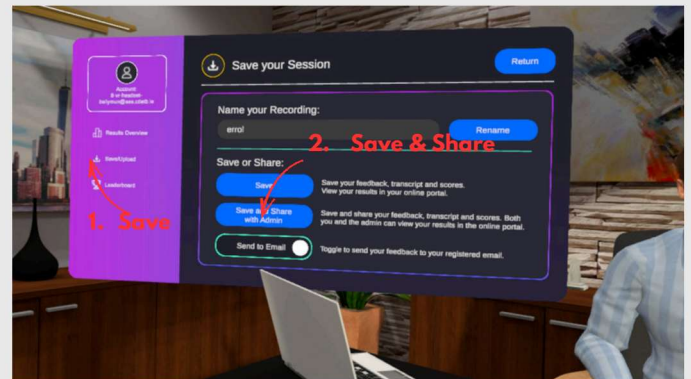
Follow steps on the back to set up your roleplay.



To Upload Results and Feedback

The user can read the results on the headset. If you want to give them a copy OR to download the audio as digital evidence for QQI, you must follow these instructions:

- Use the End button to stop the coaching session.
- On the left panel select "Save" and then "Save and Share with Admin".
- Do not close the app until this is complete - the save button will turn grey.
- Contact one of the Admin to email the documents to you.



Problem Solving

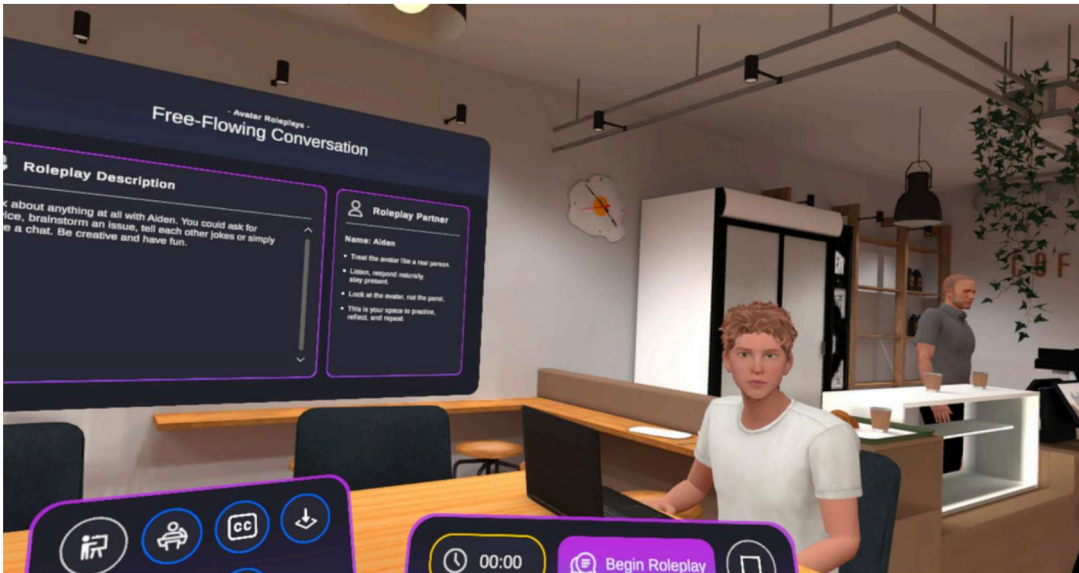
1. If the student presses the Meta button on top of the controller, they will pause the App and this screen will open. Press "Resume" and the roleplay will restart at the same place.
2. The hand controllers usually run out of battery before the headset. If pressing the trigger button does not select a button, try the left-hand (it is usually used less). If this does not work and using another headset is not possible, there are spare batteries in each of the headset bags. These are not rechargeable so please change back to the battery pack after use. Tell one of the VR Admins if you needed to do this.
3. The user can accidentally press the Passthrough button while adjusting the headset, which will bring them out of VR. Ask the user if they can see your face. They will always be able to partially see you below the headset but if they can see your face, press the round button below the headset. The long button beside this, adjusts volume.
4. If you have entered the wrong roleplay or the wrong scene, it is easiest to use the "Home" button to go back to the main Virtual Speech menu and change the settings here.



TRAINING GUIDE

For use with Virtual Speech
FREE FLOWING CONVERSATION

OPEN CONVERSATION - CHAT



This is a roleplay as an introduction to using VR and to practice public speaking.

The user decides the topic and the avatar responds by asking questions. A good topic is anything the user is interested in and is comfortable talking about. Topics that work well are countries or cities, hobbies, football clubs, movies, comic books, or world affairs.

Depending on the number of students, the course, and the time available, the tutor can decide to use this manual to set up the roleplay or give it to the student to do this. Continue the roleplay for 10-15 minutes. You can then go into the feedback stage.

Read pages 2-5 of this training manual for general instructions, including details on how to save files and problem solving tips.

Read the separate instructions leaflet on charging and



This is a training guide for the use of Virtual Speech App. Please read the pages on the use of VR and Health & Safety Presentation for more details.

The conversation will be based on a topic chosen by the user

Demo Video

<https://youtu.be/vxcMk7xGlwv>

or use QR code below



City of Dublin
FET College
Ballymun Rd

BJC
BALLYMUN
JOB CENTRE
Building a Brighter Future With Work

TRAINING GUIDE

For use with Virtual Speech

FREE FLOWING CONVERSATION



This is a training guide for the use of Virtual Speech App. Please read the pages on the use of VR and Health & Safety Presentation for more details.

The conversation will be based on a topic chosen by the user

Demo Video

<https://youtu.be/vxcMk7xGIvw>

or use QR code below

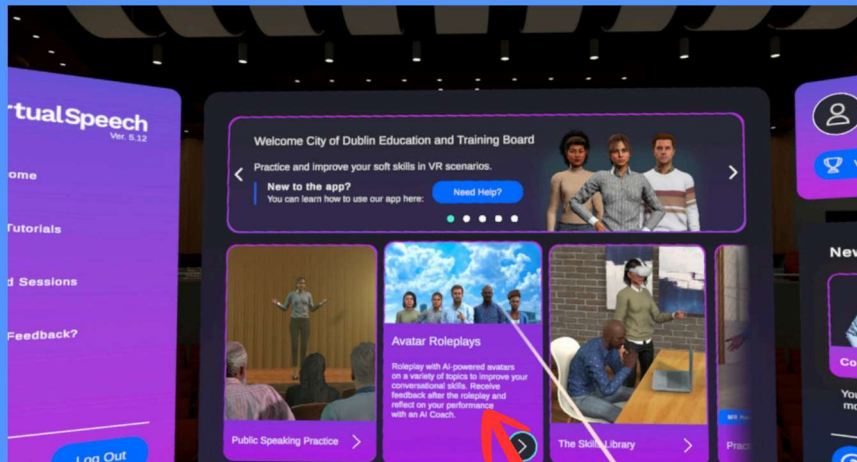


City of Dublin
FET College
Ballymun Rd

BJC
BALLYMUN
JOB CENTRE
Building a Brighter Future With Work

Step 1: Begin

STEP 01



- Choose “Avatar Roleplay” from the middle panel.
- Use the hand controller to scroll left or right if you do not see it immediately.
- Use the trigger button (index finger) to make changes.
- Do not press any of the buttons on the top of the controller.
- If you have any problems, turn to the page 4-5 for problem-solving tips.

TRAINING GUIDE

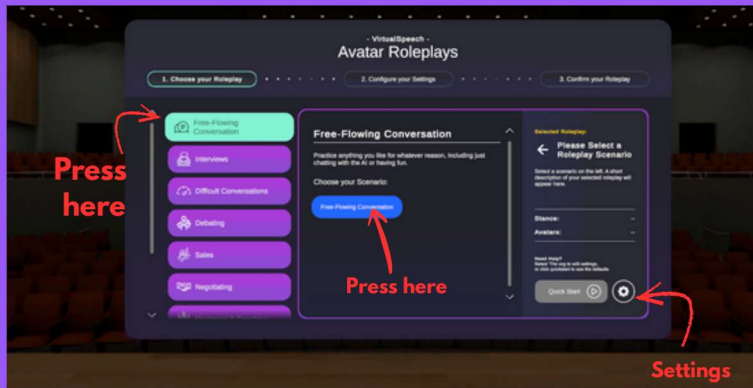
For use with Virtual Speech

FREE FLOWING CONVERSATION



Step 2: Start Role-Play

STEP 02



- Choose “Interviews” from the left-hand panel.
- The middle panel then opens with options. Choose “Free-Flowing Conversation”.
- Click on the “Settings” button, which is at the bottom. More options will be given.
- Questions will be based on the topic chosen by the user.

This is a training guide for the use of Virtual Speech App. Please read the pages on the use of VR and Health & Safety Presentation for more details.

The conversation will be based on a topic chosen by the user

Demo Video

<https://youtu.be/vxcMk7xGlVw>

or use QR code below



City of Dublin
FET College
Ballymun Rd

BJC
BALLYMUN
JOB CENTRE
Building a Brighter Future With Work

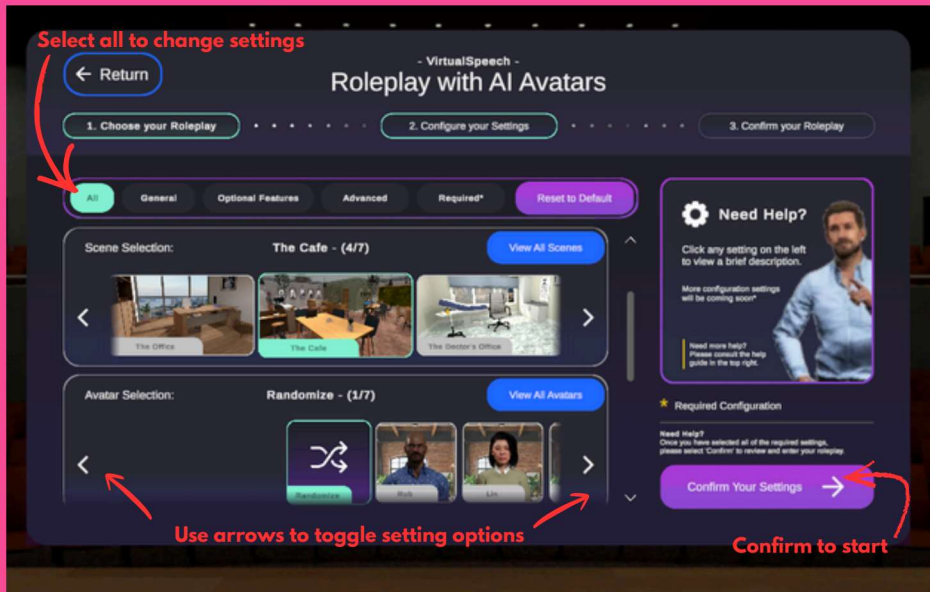
TRAINING GUIDE

For use with Virtual Speech
FREE FLOWING CONVERSATION



Step 3: Start Role-Play

STEP 03



Select "All" to change settings.

- Name - use first name only.
- Scene - the cafe works best.
- Avatar - own choice or random.
- Input type - choose Realtime.
- Language Level - CEFR B1-B2 is suitable for ESOL and Literacy students.
- There is no setting for topic - this is the first question the user will be asked.

This is a training guide for the use of Virtual Speech App. Please read the pages on the use of VR and Health & Safety Presentation for more details.

The conversation will be based on a topic chosen by the user

Demo Video

<https://youtu.be/vxcMk7xGlvw>

or use QR code below



City of Dublin
FET College
Ballymun Rd

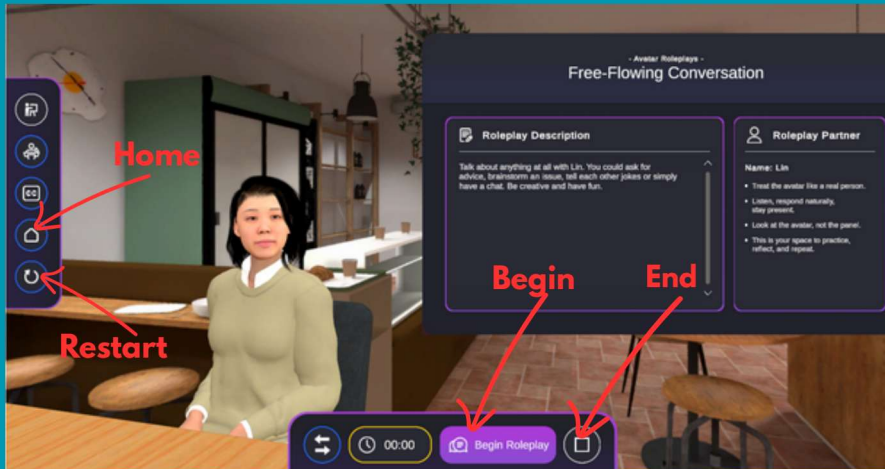
BJC
BALLYMUN
JOB CENTRE
Building a Brighter Future With Work

TRAINING GUIDE

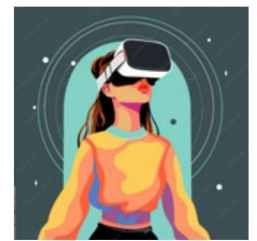
For use with Virtual Speech FREE FLOWING CONVERSATION

Step 4: Begin Role-Play

STEP 04



- Give the headset to the student, unless they are using these instructions to setup the roleplay themselves.
- The pink button at the bottom starts the roleplay.
- The “CC” button gives subtitles of the questions. This is optional.
- Click the “Home” button to change the roleplay settings.
- “Restart” begins this roleplay again.
- “End” finishes the roleplay and brings you to the feedback coaching session.



This is a training guide for the use of Virtual Speech App. Please read the pages on the use of VR and Health & Safety Presentation for more details.

The conversation will be based on a topic chosen by the user

Demo Video

<https://youtu.be/vxcMk7xGlvw>

or use QR code below



City of Dublin
FET College
Ballymun Rd

BJC
BALLYMUN
JOB CENTRE
Building a Brighter Future With Work

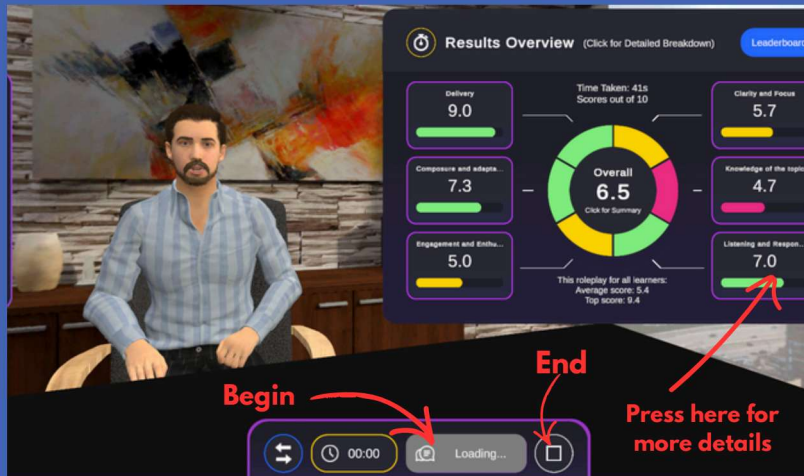
TRAINING GUIDE

For use with Virtual Speech Free Flowing Conversation



Step 5: Feedback

STEP 05



- The user will see their results.
- Move the pointer over the charts to see more detail.
- Start the coaching session by clicking on the “Begin” button once it has turned pink.
- Press the “End” button to finish the coaching session.
- If you need to print the feedback, or if you need the audio file, you must “Save and Share” the file with Admin. Check the page on Uploading files.
- Use the “Exit” button. DO NOT USE the “Log Out” button. If you accidentally do this, please tell one of the VR admins.

This is a training guide for the use of Virtual Speech App. Please read the pages on the use of VR and Health & Safety Presentation for more details.

The conversation will be based on a topic chosen by the user

Demo Video

<https://youtu.be/vxcMk7xGIvw>

or use QR code below



City of Dublin
FET College
Ballymun Rd

BJC
BALLYMUN
JOB CENTRE
Building a Brighter Future With Work

QUICK GUIDE

For use with Virtual Speech FREE FLOWING CONVERSATION



This is a quick guide for reference in class. Please read the Training Guide and Health & Safety Presentation for more details

The conversation will be based on a topic chosen by the user

Demo Video

<https://youtu.be/vxcMk7xGIvw>

or use QR code below



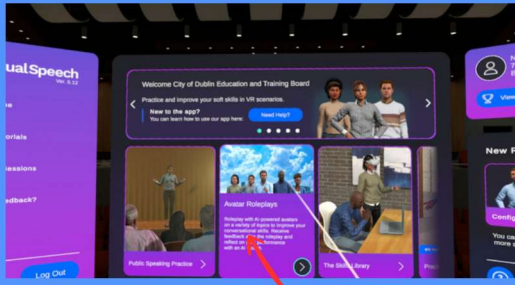
City of Dublin
FET College
Ballymun Rd



STEP 01

BEGIN

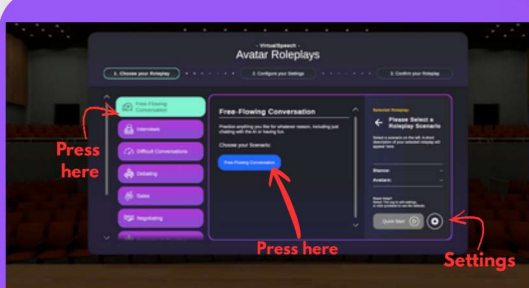
Choose Avatar Roleplay from the middle panel. Use the hand controller to scroll left or right if you don't see it immediately. Use the trigger button (index finger) to make changes. Do not press any of the buttons on the top of the controller. If you have any problems, turn page over for problem solving hints.



STEP 02

START ROLEPLAY

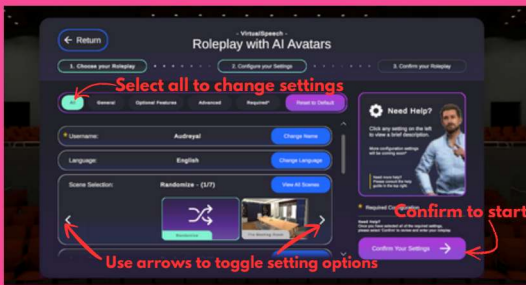
Choose Free-Flowing Conversation from the left-hand panel. The middle panel then opens with options. Choose Free Flowing Conversation. Click on the "Settings" button, which is at the bottom, on the right hand side, to change settings.



STEP 03

SETTINGS

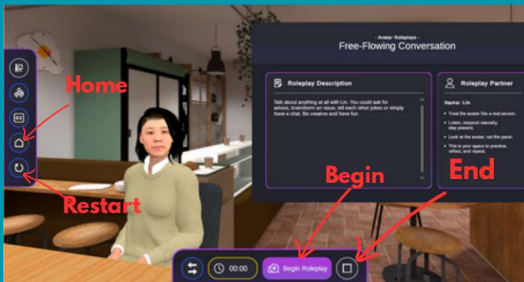
Select "All" to change settings. Name - use first name only. Scene - the cafe works best. Avatar - own choice or random. Input type - choose Realtime. Language Level - B1-B2 is suitable for most of our students. Topic - there is no setting for topic; the user will be asked what they want to speak about.



STEP 04

BEGIN ROLEPLAY

Give the headset to the student, unless they are using these instructions to setup the roleplay themselves. The pink button at the bottom starts the roleplay. The "CC" button gives subtitles. Use "Home" if you need to change the roleplay settings. "Restart" begins this roleplay again. "End" finishes the talk.



STEP 05

FEEDBACK

The user will see their results. Move the pointer over the charts to see more detail. Start the coaching session once the Begin button has turned pink. Press the "End" button to finish. Turn over for instructions to save the results and share them with the Educator.



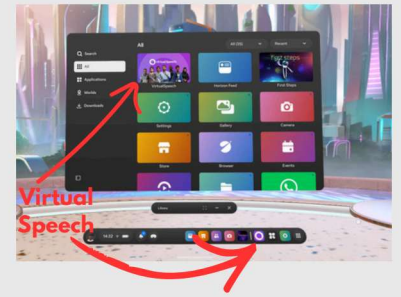
FREE FLOWING CONVERSATION

QUICK GUIDE

This is a roleplay to practice public speaking, The user decides the topic and the avatar responds by asking questions. A good topic is anything the user is interested in and is comfortable talking about. Topics that work well are countries or cities, hobbies, football clubs, movies, comic books, or world affairs. Depending on the number of students, the course, and the time available, the tutor can decide to use this manual to set up the roleplay or give it to the student to do this. Continue the roleplay for 10-15 minutes. You can then go into the feedback stage. Read the separate instructions leaflet on charging and cleaning the headsets if you are new to VR.

To Open the Virtual Speech App

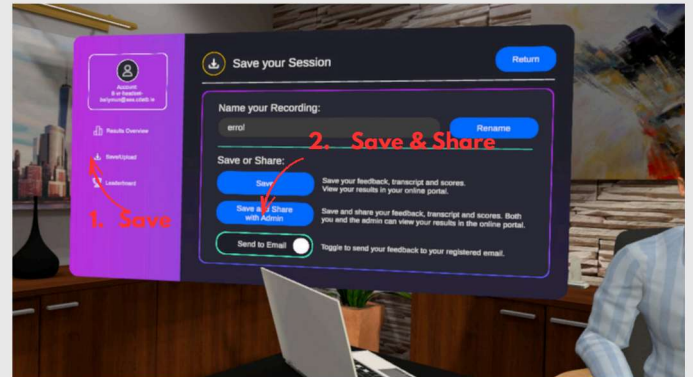
Press the Meta button on the right controller. There may be a link to Virtual Speech on the bottom bar or it can be selected from the main Horizon menu of Apps. Follow steps on the back to set up your roleplay.



To Upload Results and Feedback

The user can read the results on the headset but if you want to give them a copy OR to download the audio as digital evidence for QQI, you must follow these instructions:

- Use the End button to stop the coaching session.
- On the left panel select “Save” and then “Save and Share with Admin”.
- Do not close the app until this is complete - the save button will turn grey
- Contact one of the Admin to email the documents to you.



Problem Solving

1. If the student presses the Meta button on top of the controller, they will pause the App and this screen will open. Press “Resume” and the roleplay will restart at the same place
2. The hand controllers usually run out of battery before the headset. If pressing the trigger button does not select a button, try the left-hand (it is usually used less). If this does not work and using another headset is not possible, there are spare batteries in each of the headset bags. These are not rechargeable so please change back to the battery pack after use. Tell one of the VR Admins if you needed to do this.
3. The user can accidentally press the Passthrough button while adjusting the headset, which will bring them out of VR. Ask the user if they can see your face. They will always be able to partially see you below the headset but if they can see your face, press the round button below the headset. The long button beside this, adjusts volume.
4. If you have entered the wrong roleplay or the wrong scene, it is easiest to use the Home button to go back to the main Virtual Speech menu and change the settings here.

