

# CONSERVING ESSENTIAL LANDS AND WATERS

The Pacific Northwest Resilient Landscapes Initiative



## LAND TRUST PROFILE

### North Coast Land Conservancy

**Founded in:** 1986 · **Service Area:** Clatsop, Tillamook, & Lincoln counties, OR · **Acres Protected:** 5,000

For more information, visit: [www.nclctrust.org/creating-a-rainforest-reserve](http://www.nclctrust.org/creating-a-rainforest-reserve)

#### Project Story

The Rainforest Reserve project will conserve 3,500 acres of coastal rainforest and rocky bald habitat adjacent to Oswald West State Park, Cape Falcon Marine Reserve, and the proposed Arch Cape Community Forest, creating a resilient sea-to-summit conservation corridor stretching from the Pacific Ocean to the crests of the Coast Range.

The Rainforest Reserve is a climate-resilient landscape characterized by steep forested slopes, rocky outcrops featuring federal plant species of concern, and the headwaters of salmon streams and the drinking water sources for the communities of Cannon Beach and Arch Cape.

The North Coast Land Conservancy's capacity to develop a project of this scale and impact has been bolstered by the investments of the Land Trust Alliance and numerous foundations through the years. Decades of work by the Conservancy and its community and agency partners have laid the groundwork for this extraordinary opportunity to acquire and manage a significant landscape for its conservation and community values.

#### Landscape Context

Acquisition of the Rainforest Reserve will link Oswald West State Park and the Cape Falcon Marine Reserve with the proposed Arch Cape Community Forest to create a 32-square-mile conservation corridor stretching from the crest of the Coast Range to the nearshore ocean.

#### How the project advances climate resilience

The Rainforest Reserve project is an exceptionally rare opportunity for a natural climate solution in a region where the predominance of industrial timber ownership typically precludes large-scale forestland conservation. Acquisition will allow for a shift in forest management and the conservation of a landscape rich in biodiversity and a wide range of habitats and elevations to support species' adaptation to climate changes.

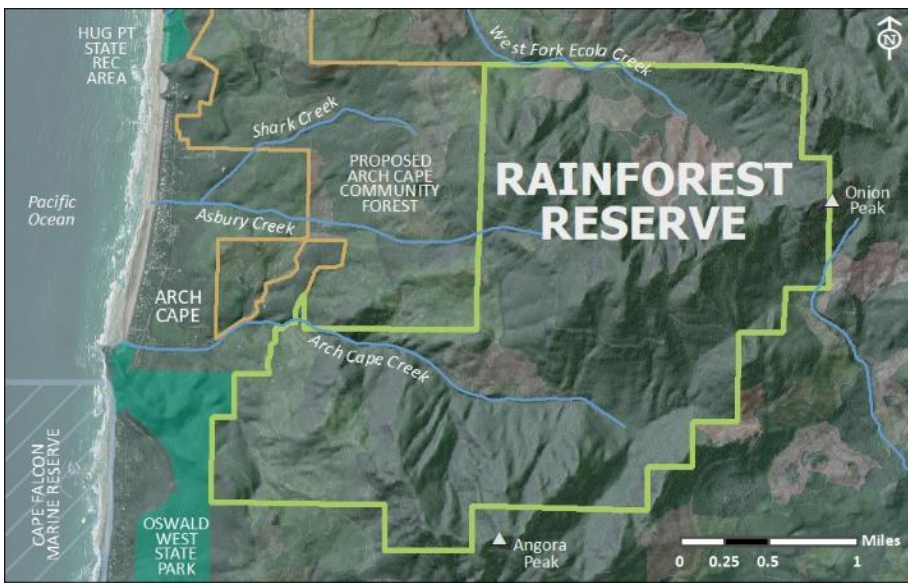
#### Project Highlights

- 3,500-acre Rainforest Reserve acquisition will create a 32-square-mile conservation corridor from mountain peaks to nearshore ocean
- Diverse array of habitats and microclimates, supporting a high level of biodiversity in the present and climate adaptation into the future
- Enhances drinking watersheds for two coastal communities by allowing for forest restoration
- Protects globally rare plant species found on these rocky peaks and nowhere else on Earth
- Leverages partnership with Arch Cape Water District to conserve the adjacent community forest with funding not available to land trusts

#### Restoration Activities Planned

- In collaboration with other managers of coastal rainforest, NCLC will steward the forest toward old growth characteristics
- Stands of densely planted young trees will be thinned and additional tree species diversity added to increase climate resiliency
- Sensitive rocky bald habitats harboring globally rare and state and federally listed plant species of concern will be protected
- Non-essential forest roads will be decommissioned over time to enhance landscape permeability

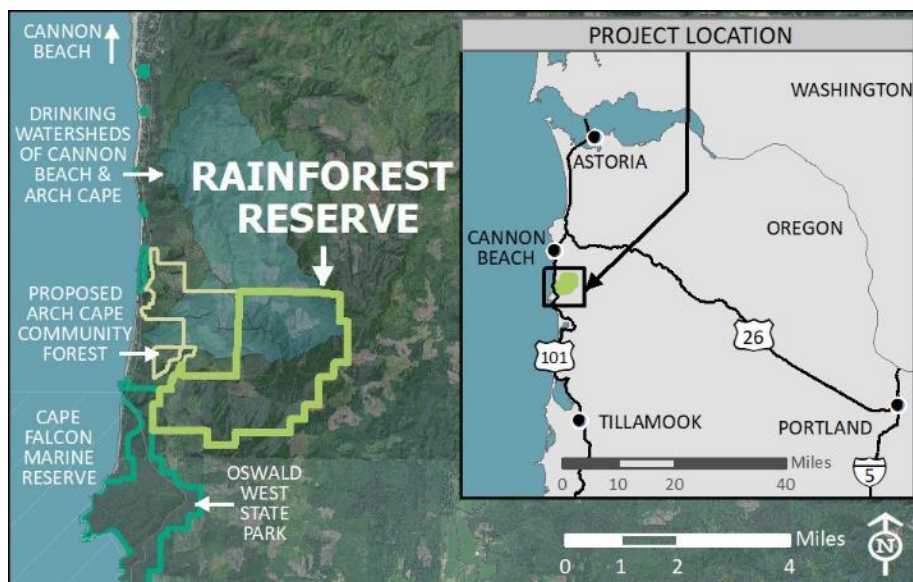




The 3,500-acre Rainforest Reserve will link the crest of the Coast Range at Onion Peak with Oswald West State Park and Cape Falcon Marine Reserve.



The federally listed Chambers paintbrush exists only on North Coast rocky peaks. (Photo: NCLC)



The Rainforest Reserve is the backdrop to beloved coastal communities and parks. (Maps: NCLC)



Old logging roads provide hiking access. (Photo: Amy Hutmacher)



Onion Peak climbs precipitously to 3,057 feet, creating a wide range of microclimates and niches. (Photo: Randall Henderson)



Fog condensing on trees is a critical water source in coastal watersheds; managing for old growth will enhance this process. (Photo: Justin Bailie)