

DE LA ESPADA
UPHOLSTERY COLLECTION
2024

DE LA ESPADA

FROM 1 NOVEMBER 2024

INDEX

DE LA ESPADA

PAGE PRICE RANGE

FABRICS

ECRITURE.....	3	Ⓐ
CIFRADO.....	4	Ⓑ
ELLE.....	5	Ⓑ
KEIGA.....	6	Ⓒ
SONAR 3.....	7	Ⓒ+
BYRAM.....	8	Ⓓ
EINAR.....	9	Ⓓ

LEATHER / SHEEPSKIN

CORRECTED GRAIN / FINISHED..	10	Ⓐ
NATURAL GRAIN LEATHER.....	11	Ⓑ
ELMORUSTICAL VIII.....	12	Ⓒ+
CURLY SHEEPSKIN.....	13	Ⓓ

ECRITURE

A matte melange bouclé with an elegant sheen, Ecriture combines shiny, matte and chenille yarns for a rich texture and a comfortable feel.

MATERIAL:

40% Polyacrylic

27% Polyester

18% Viscose

9% Linen

6% Cotton

DESIGNER:

Sahco

DURABILITY:

70,000 Martindale

DE LA ESPADA



0200



0210



0240



0270



0970



0640



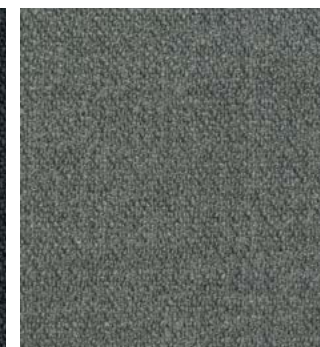
0380



0180



0780



0170



RANGE

CIFRADO

A heavyweight chenille, Cifrado combines chenille and twisted cotton with a double warp of twisted linen and viscose and a high percentage of recycled yarns. It is tumble-finished to achieve a lived-in effect.

MATERIAL:

42% Recycled polyester
27% Viscose
24% Recycled cotton
7% Linen

DESIGNER:

Sahco

DURABILITY:

30,000 Martindale

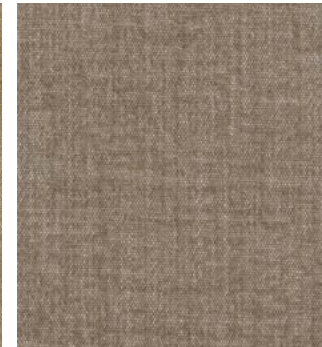
DE LA ESPADA



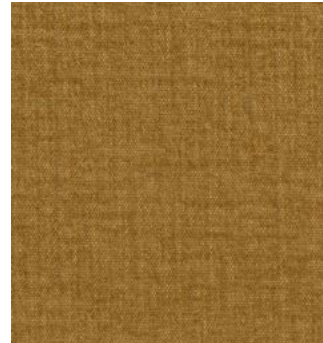
0221



0241



0231



0451



0611



0791



0771



0741



RANGE

ELLE

A curled bouclé fabric with a slight sheen, Elle has a captivating tone shift due to the differing ways the various yarns take the colour. It has a soft tactility.

MATERIAL:

25% Cotton
20% Viscose
20% Polyacrylic
20% New wool
15% Nylon

DESIGNER:

Sahco

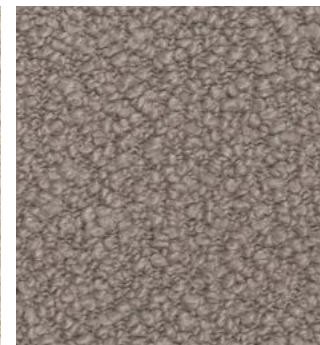
DURABILITY:

70,000 Martindale

DE LA ESPADA



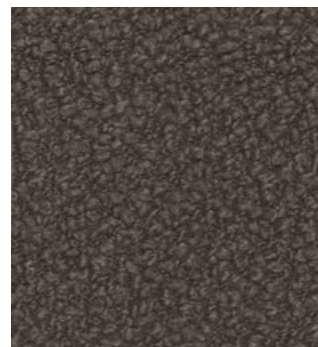
0200



0220



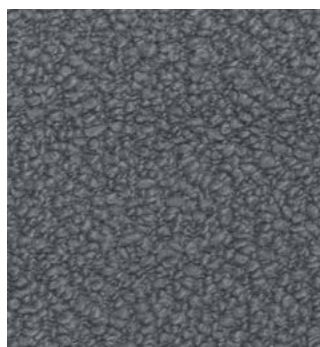
0480



0280



0390



0150



0290



0180



RANGE

KEIGA

Keiga is rich in nuance;
matte wool grounds the
structure, enlivened by the
contrast from the shiny
yarns.

MATERIAL:

38% New wool

37% Viscose

16% Linen

9% Nylon

DESIGNER:

Sahco

DURABILITY:

50,000 Martindale

DE LA ESPADA



0112



0222



0242



0622



RANGE

SONAR 3

Inspired by the fine suiting tweeds used in high-end fashion garments, Sonar, designed by Raf Simons, features a complex mix of colours and textures.

MATERIAL:

- 59% New wool
- 25% Viscose
- 9% Linen
- 5% Nylon
- 2% Polyester

DESIGNER:

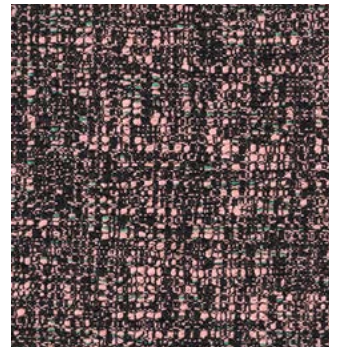
Raf Simons

DURABILITY:

20,000 Martindale



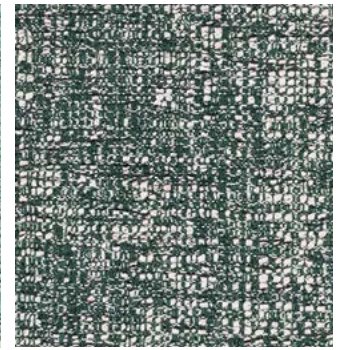
0113



0684



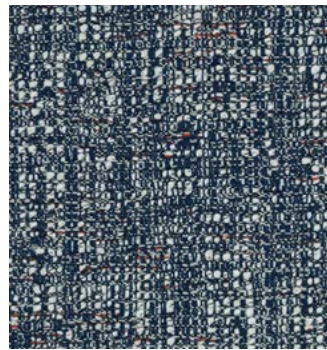
0934



0974



0153



0773



0173



BYRAM

Byram, designed by Raf Simons, is made with pure kid mohair. Thanks to the satiny sheen of its pile, Byram exhibits beautifully nuanced colour.

MATERIAL:

100% Kid mohair

DESIGNER:

Raf Simons

DURABILITY:

70,000 Martindale

DE LA ESPADA



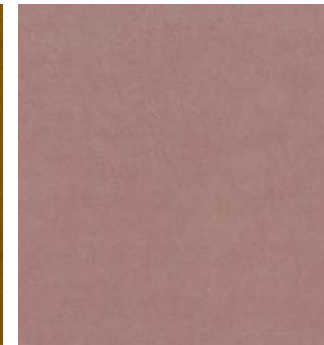
131



361



471



621



161



761



971



RANGE

EINAR

Einar, designed by Raf Simons, is plush and ultra-soft from the combination of mohair and alpaca. The nuanced colour of the evenly cut pile is accentuated by slight variations in the cotton base.

MATERIAL:

70% Alpaca

30% Mohair

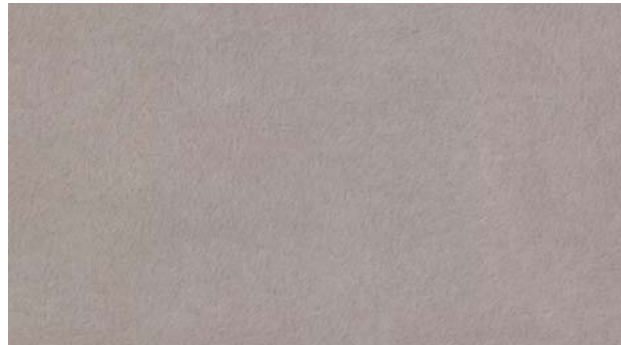
DESIGNER:

Raf Simons

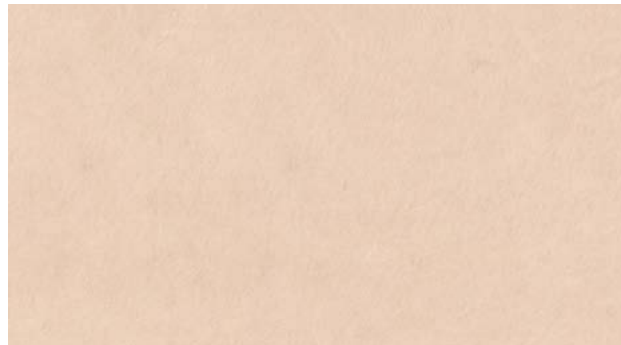
DURABILITY:

20,000 Martindale

DE LA ESPADA



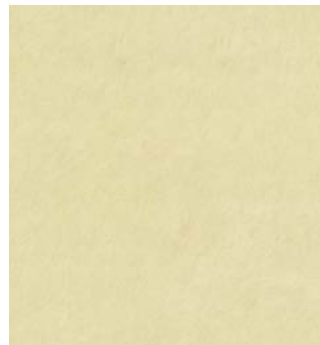
0127



0527



0987



0427



0197



RANGE

CORRECTED GRAIN / FINISHED LEATHER

DE LA ESPADA

Our finished leather is soft, supple, and hardwearing. A corrected grain leather, it has a uniform surface and a protective top coat. Suitable for a wide range of applications, it is resistant to spillage and staining and is easy to clean. This low-maintenance leather has a soft handle and a silky matte finish.



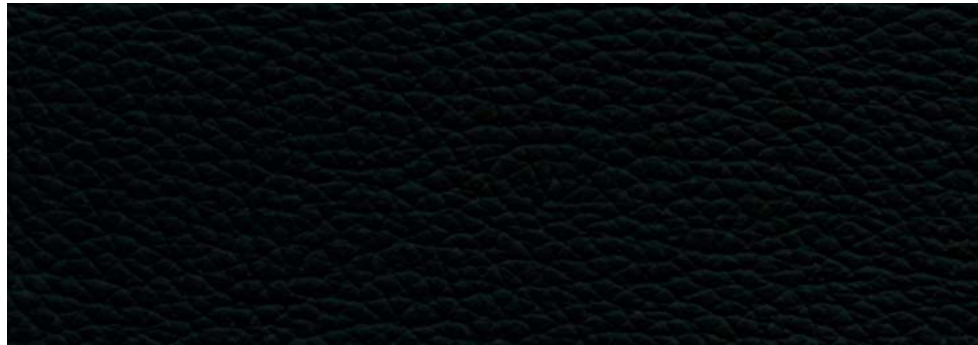
FOG



DUNE



CHOCOLATE



LIQUORICE



RANGE

NATURAL GRAIN LEATHER

The natural grain of this cow hide leather is preserved, the surface lightly buffed. The hides, chosen for their more uniform surface, will contain natural grain variations and may contain other small marks, such as scars, lending each piece individuality and character.

The hide is through-dyed then finished with pigmented and protective coats, producing a waxy feel and semi-matte appearance. This leather is soft, hardwearing, and low-maintenance.



BROWN



BLACK

DE LA ESPADA

B

RANGE

ELMORUSTICAL VIII

DE LA ESPADA

An aniline leather from Scandinavian cattle, Elmorustical is soft and natural, offering outstanding comfort. The finest quality hides are chosen, as this full grain leather maintains the distinct features of the natural hide, lending each piece individuality and character. The surface is untreated, offering a luxuriously soft and natural feel. This leather is more sensitive to stains and will develop a patina over time, improving with the mark of age.

Please note that when using Elmorustical to upholster expansive surfaces such as the headboard of a bed, our craftspeople will use their discretion to ensure the natural variations in the colour and grain are most elegantly displayed. This may mean adding a stitch line to the surface.



22679



91089



93287



99991



RANGE

CURLY SHEEPSKIN

Our curly wool sheepskin is durable and luxuriously soft. Its wool height, varying between 12mm and 17mm, provides sumptuous depth while allowing for clean contours on our upholstered furniture. The visual depth is enhanced by the subtle variation between the highlighted tips and darker base. As every hide is unique, the structure of the wool may vary in regard to height, curls, and colour.

This material is scarce as the hides are small and, while they vary in quality, only the best quality hides are chosen before being expertly stitched together by our supplier in Sweden. This scarcity affects our manufacturing lead time, so products purchased in Curly Sheepskin will always have extended lead times.

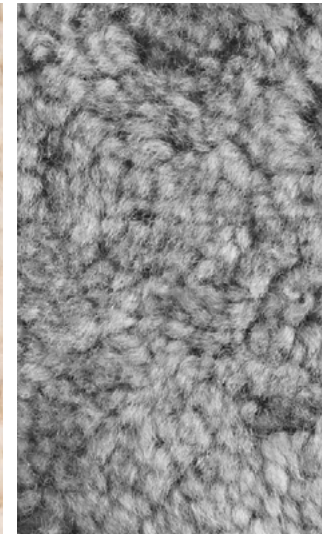
Curly Sheepskin is only available on select products, as it behaves differently from leather and most textiles in terms of elasticity which affects how it is applied to different shapes.

Curly Sheepskin is currently available for the following products:

- Capo Lounge Armchair
- Capo Lounge Chair
- Cursa Lounge Chair
- Elysia Lounge Chair
- Hadar Lounge Chair
- Nino Ottoman
- Saia Lounge Chair
- Sela Lounge Chair with Narrow Arms
- Sela Lounge Chair with Wide Arms
- Solo Lounge Chair
- Solo Ottoman
- Twenty-Five Bergere Chair
- Twenty-Five Lounge Armchair
- Twenty-Five Ottoman



MOHAWI



SCANDINAVIAN GREY



Further colour and fabric options are available.
To discuss options or request samples, please
contact our sales team.

SALES@DELAESPADA.COM

DELAESPADA.COM

DE LA ESPADA