

EAT, DRINK & SCORE
EAT, DRINK & SCORE
EAT, DRINK & SCORE

WWW.TOCA.SOCIAL

IG: TOCASOCIAL



WHAT MAKES TOCA SOCIAL UNIQUE?



ARE YOU GAME?
ARE YOU GAME?
ARE YOU GAME?
ARE YOU GAME?
ARE YOU GAME?
ARE YOU GAME?
ARE YOU GAME?

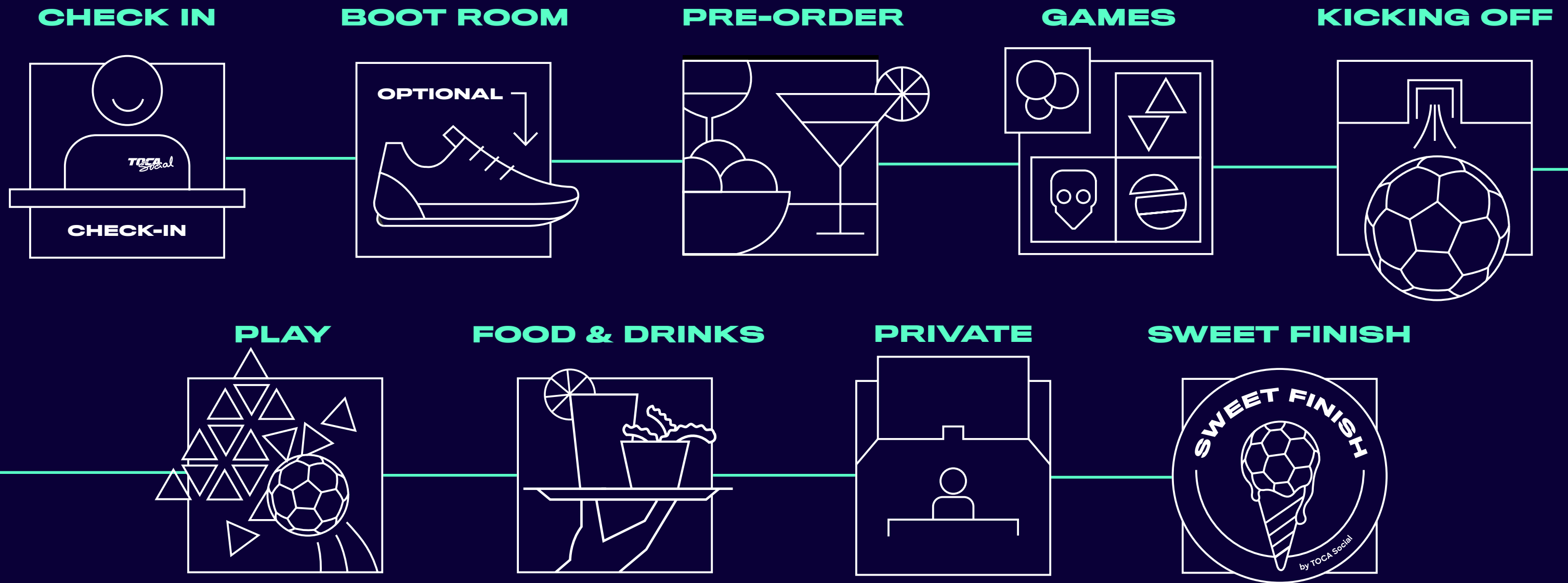
YOUR GAME PLAN

After walking through the iconic O2, you will arrive at the TOCA Social check-in desk, where you will be greeted by one of our TOCA Greeters. If needed, guests will be taken to our Boot Room where you can change your shoes into someboots made to play.

Your pre-ordered drinks will be chilled, ready and waiting in your box. Your TOCA Box Host will walk you through the four games and give you some top tips on how to finish top of the league.

Let's get playing! It's time for you and your group to start smashing top bins and compete for the MVP!

All food and drinks ordered will be delivered to your Box and for anything extra you would like to order, your Box Host will be there to do that for you!



SET PACKAGES

FROM 12-36 GUESTS

		OFF PEAK			OFF PEAK			OFF PEAK
FOR THE FANS		£45	CLUBHOUSE SPECIAL		£55	EXECUTIVE		£70
		£38			£48			£60
 FIXTURE - 2 HOURS			 FIXTURE - 2 HOURS			 FIXTURE - 3 HOURS		
 FAN FAVOURITE PLATTER			 2X BOTTLED BEERS			 2X BOTTLED BEERS		
 2X BOTTLED BEERS			 1X READY TO DRINK CANNED COCKTAIL			 1X READY TO DRINK CANNED COCKTAIL		
 1X READY TO DRINK CANNED COCKTAIL			 FAN FAVOURITE PLATTER			 FAN FAVOURITE PLATTER		
			 BUN OR BOWL PER PERSON			 BUN OR BOWL PER PERSON		
						 SWEET FINISH DESSERT		
						 TOCA MEDAL		



	Keg of beer £80 14x Pints of Birra		Custom Shirt £50 TOCA Shirts personalisable		Cocktails £80 10x Ready to Drink Cocktails		Bubbles £80 2x Bottles of Fizz		Bundles & Extras £ on request Customisable
---	--	---	---	---	--	---	--	---	--

How is it served?

Platters are portioned to the number of guests and served during game time. Buns/Bowls can be served during game time or we can reserve the group an area to enjoy seated. Please note this is dependent on availability. No and Low drink alternatives available with packages, please request this with your event planner.

T&C'S

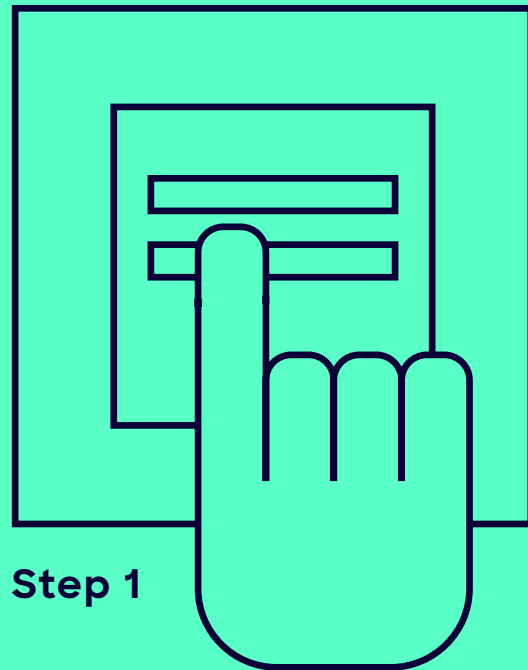
Event packages are priced per person and are available for a minimum of 12 guests. Booking is confirmed once the initial deposit payment is completed. All packages are inclusive of VAT and 12.5% Service Charge. Off-Peak prices are available Monday-Friday before 4pm. Monday-Friday post 4pm and all weekend is Peak.

ARE YOU GAME? ARE YOU GAME?

HOW TO BUILD YOUR EVENT

ARE YOU GAME?
37+
PEOPLE
ARE YOU GAME?

**CHOOSE YOUR
EVENT SPACE**



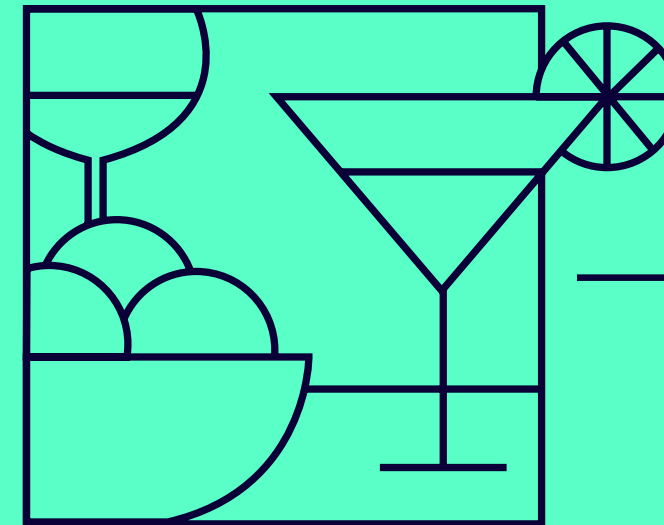
Step 1

**ADD A FOOD
PACKAGE**



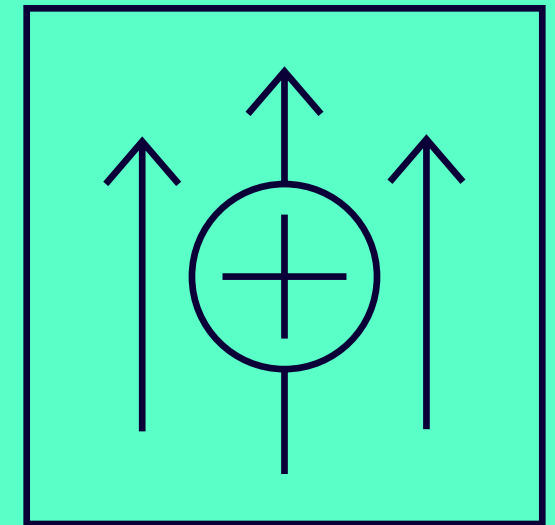
Step 2

**ADD A DRINKS
PACKAGE**



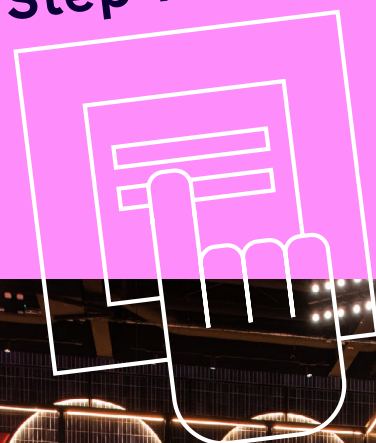
Step 3

**ENHANCE
YOUR EVENT**



Step 4

Step 1



CHOOSE YOUR EVENT SPACE

[TAKE A 360° TOUR](#)



FULL VENUE

The entire venue is split over two floors and boasts a capacity of 700. Our flexible spaces can be exclusively hired, privatised or semi-privatised to fit your needs.



CORNER BAR

Our Corner Bar event space offers an ideal location for your next private event for up to 200 guests. It offers seven playing boxes and a large interactive networking space.



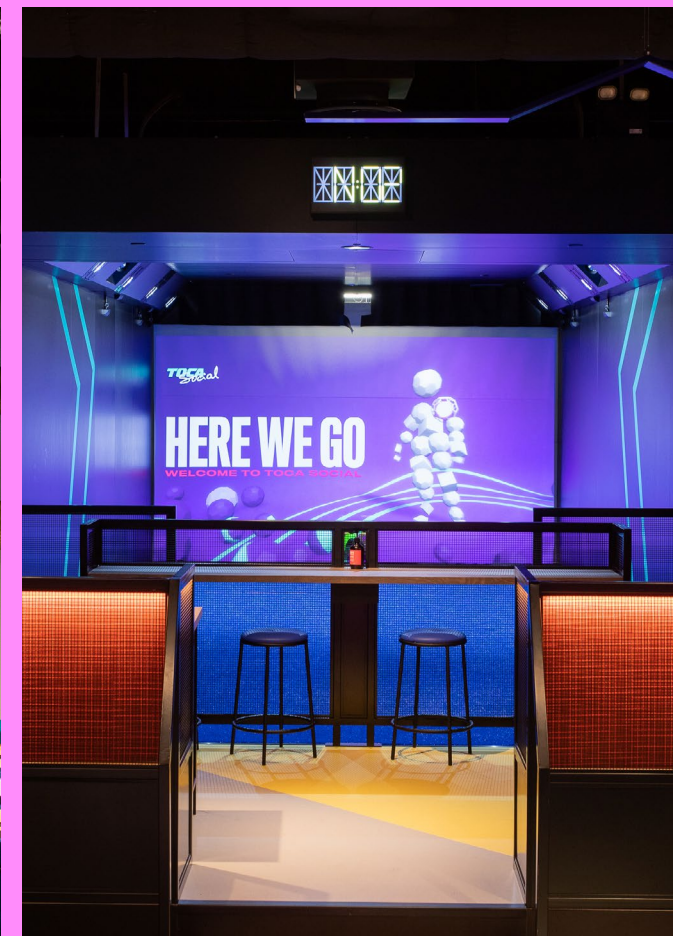
PLAYERS' LOUNGE

This purpose-built space for private events is ideal for seasonal celebrations with its own Tequila Bar and Photo booth. Inject some VIP treatment into your next event by claiming the Players' Lounge for up to 250 guests.



EXECUTIVE BOXES

Our executive area offers two private boxes for game time, as well as space for networking inbetween. Located on the upper mezzanine level of the venue, this space is perfect for up to 50 guests.



JUST A BOX

Each box accommodates 12 guests playing at a time. If you're squad is on the smaller side our boxes are customisable to allow you to mingle between them.

VENUE MAP

VENUE CAPACITY

EXCLUSIVE HIRE 700 Total

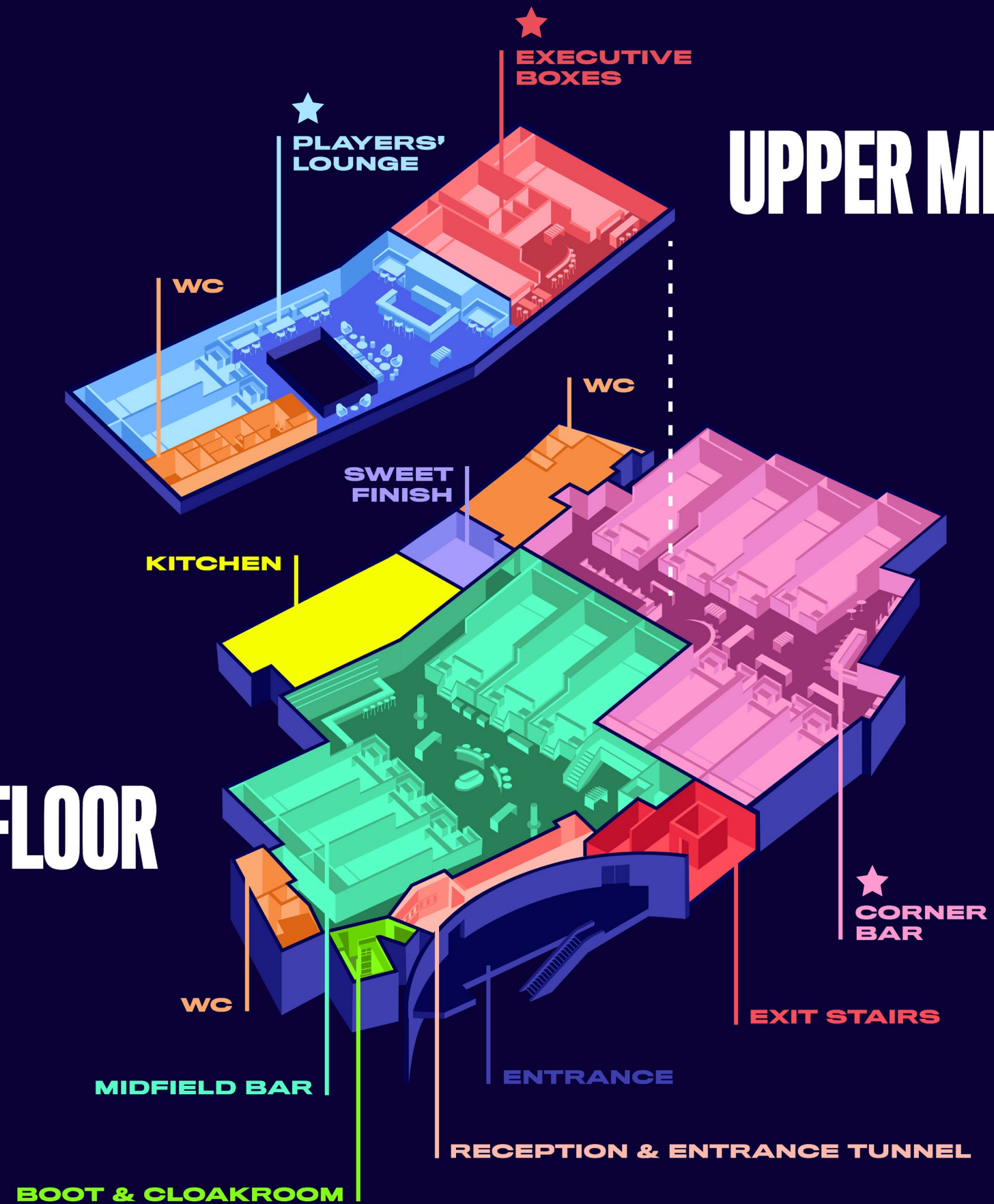
CORNER BAR 200

PLAYERS' LOUNGE 250

EXECUTIVE BOXES 50

MAIN FLOOR

UPPER MEZZANINE



Step 2



ADD A FOOD PACKAGE

CLICK TO SEE OUR FOOD MENU

BITES & BOWLS	
BITES	
CALI TUNA BITE Sashimi Grade Seared Tuna, Mango Salsa	MINI SLIDERS Hero Nashville Chicken Fried Chicken, Pickles, Kewpie Mayo, Brioche
ALABAMA CHICKEN Chicken Breast Skewers, Alabama Sauce, Sweet Chili	Cheeseburger Beef Patty, American Cheese, Brioche
STICKY CHICKEN Chicken Breast Skewer, Hoisin, Ginger, Sweet Chili	Vegan Cheeseburger Vegan Mushroom Patty, Vegan Cheese, TOCA Burger Sauce, Bun.
KOREAN SALMON WITH CRISPY ONION KIMCHI Salmon Fillet, Gochujang Sauce, Crispy Onion, Kimchi	LOBSTER ROLL (+£2 SUPPLEMENT) Canadian Lobster, Spicy Mayonnaise, Brioche Roll
CAULI CHEESE POPCORN Fried Spiced Cauliflower, Cheese Sauce	TOCA FRIED PICKLES Polenta Fried Pickles, Green Tabasco
CHEESEBURGER CROQUETTES Beef Mince Croquette, American Cheese, Pickle Relish, Cheese Dip, Parmesan	SWEET & SOUR KING PRAWNS King Prawn, Ketchup, Tagline Spice
BOSTON RIB EYE, ROSTI, PICKLED SHALLOTS Potato Rosti, Rare Beef, Pickled Shallot	MISO SMOKED TOFU WITH NORI POWDER Smoked Tofu, Nori Powder
NEW YORK MEATBALLS Beef Meatballs, Tomato Sauce, Parmesan Cheese	100'S & 1000'S CHURRO BOAT Churros, Hot Chocolate Sauce, 100'S And 1000'S
CAESAR SALAD Shredded Iceberg Lettuce, Caesar Dressing, Maple Bacon Crumb, Sourdough Croutons	7 CHEESE MAC N CHEESE Macaroni, TOCA Cheese Sauce
ADD CHICKEN SMOKED TOFU VEGAN FETA	SPRING CHOPPED SALAD Heritage Tomato, Corn, Cucumber, Tenderstem Broccoli, Roasted Chickpeas, Watercress, Lemon Dressing
<small> HERO DISHES VEGETARIAN DISHES VEGAN DISHES Please inform one of our team if you have any allergies or require information on ingredients used in our dishes. All Bites & Bowls will be served with a mixture of House Fries and Sweet Potato Fries.</small>	



PRO £24pp

3x BITES

1x BOWL per person



WORLD CLASS £32pp

3x BITES

2x BOWLS per person



LEGENDARY £40pp

3x BITES

2x BOWLS per person

1x SWEET FINISH DESSERT per person

Step 3



ADD A DRINKS PACKAGE

ADD YELLOW OR RED CARD
DRINK TOKENS FOR A HASSLE
FREE OPEN BAR



YELLOW CARD - £6.50

All Beers

Conde Villar Vinho Verde Branco

Montepulciano d'Abruzzo DOC Minini

Cote Rose VDP Cotes Catalanes

Cavicchioli Pignoletto Modena DOC

House Single Spirit & Mixer

All Soft Drinks

RED CARD - £11

All Beers

Chateau Du Caillau Cahors Malbec

Xanadu Exmoor Chardonnay

Cote Rose VDP Cotes Catalanes

Fitz Pink & Fitz Sparkling Wine NV

Ready to Drink Cocktails

Cocktails: Heroes & Classic Twists

No & Low Cocktails

Single Spirit & Mixer

All Soft Drinks

CLICK TO SEE THE DRINKS MENU

DRINKS

BEER

Heineken
Birra Moretti
Menabrea
Beavertown GAMMA RAY
Symonds Cider
Brixton IPA
Signature Brew Rewind
Gluten Free Lager
Half-Time IPA
Full-Time Lager
Wignac Cider Apple
Wignac Cider Rose
Guinness
Freestar
Modelo
Heineken 00

SOFTS

Coke/Diet/Zero
Ting
Appletiser
Ginger Beer
Red Bull Energy Drink
Abita Root Beer
Punchy
Cucumber, Yuzu, Rosemary
Peach, Ginger, Chai
Blood Orange, Bitters, Cardamom

Orange Juice

Apple Juice
Guava Juice
Pineapple Juice
Lychee Juice
Cranberry Juice
Grapefruit Juice
Large Still Water
Large Sparkling Water

SINGLE HOUSE SPIRIT MIXER

Sapling Vodka
Cazcabel Tequila
Mount Gay Rum
Portobello Road Gin
Buffalo Trace Bourbon

WINE

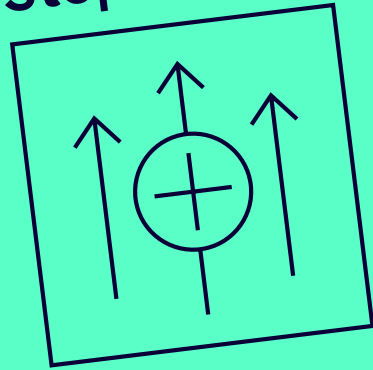
Conde Villar Vinho Verde Branco 175ml
Montepulciano d'Abruzzo DOC Minini 175ml

Please inform one of our team if you have any allergies or require information on ingredients used in our food and drinks.

TOCA Social

ADD
ONS

Step 4



ENHANCE YOUR EVENT

TOCA MERCH

Need a little memento? We have all the swag necessary, to kit out the entire squad.

COCKTAIL MAKING

Become a master in making cocktails by dusting up on your skills behind the bar.

ADDITIONAL GAME TIME

Fancy a little 'Fergie Time'? You can add on extra game time, to keep the fun going for a little longer.

RESIDENT DJ

Resident DJs who can be tailor picked to ensure they are spinning all the right tracks to keep your event moving.



Please note, all add-ons come at an extra charge. Our Events Team are on hand to talk you through your budget and options.

MEET YOUR EVENTS TEAM



**ABIGAIL
SOLIERI**

Head Of Events



**JESSMI
DEVLIA**

Event Manager



**DHRENA
MISTRY**

Event Executive



**KARINA
ANDRIANOVA**

Event Executive

events@toca.social

ENQUIRE ENQUIRE

0330 460 9761



THE O2, PENINSULA SQUARE, LONDON SE10 0DX

-  **NORTH GREENWICH (JUBILEE LINE)**
From Canary Wharf (1 Stop), London Bridge (4 Stops)
-  **EMIRATES GREENWICH PENINSULA**
From the Royal Docks and the Excel Centre (5 minute walk from the O2)
-  **NORTH GREENWICH PIER**
Every 20 minutes from London Bridge, Tower, Embankment, Westminster and London Eye
-  **NORTH GREENWICH STATION (BUS)**
108, 129, 132, 161, 188, 422, 472 or 486
-  **CAR PARK**
Use car parks 2, 3 or 4. 2,000+ spaces, £9 for 2-4 hours
-  **WE ARE ALSO VERY CLOSE TO LONDON CITY AIRPORT, IF YOU FANCY FLYING IN...**