

## C2026-06-40-M7

SystemairCAD release notes

**This release will contain two major product news for Geniox modular units**

- Low GWP heat pump in Geniox 10, 11, 12 and 14
- Enthalpy counterflow heat exchangers for Geniox 10 – 24

**The release also includes other product updates described further down in the document:**

- [Low GWP heat pump](#)
- [Enthalpy counterflow heat exchanger](#)
- [Kitchen fan's in EC version](#)
- [Modbus communication, EC fan's](#)
- [Cylinder filters](#)
- [Heating, cooling and Change over coils.](#)
- [Shipping data in the printout](#)
- [Plug fan's with AC foot motors phase out](#)

## Low GWP heat pump

The Low GWP heat pump will be available on the following markets in SystemairCAD:

- Denmark
- United Kingdom
- Sweden
- Netherlands
- Belgium
- Germany
- Finland
- Ireland
- Norway

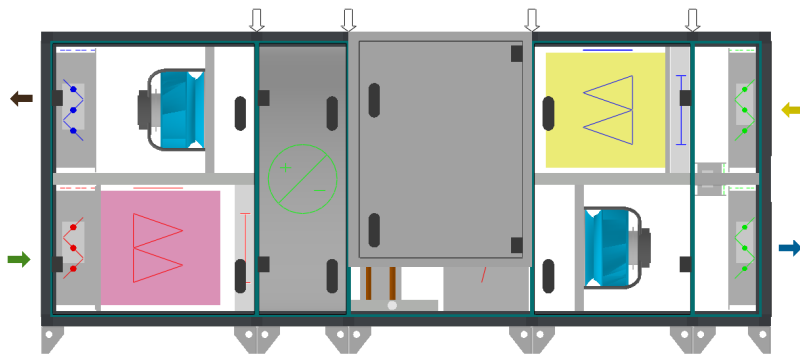
First step in the market launch will be Denmark and United Kingdom, who will be able to order from today.

First delivery week 36 - 2026.

Sweden, Netherlands, Belgium, Germany, Finland, Ireland and Norway will be able to order from week 36 - 2026.

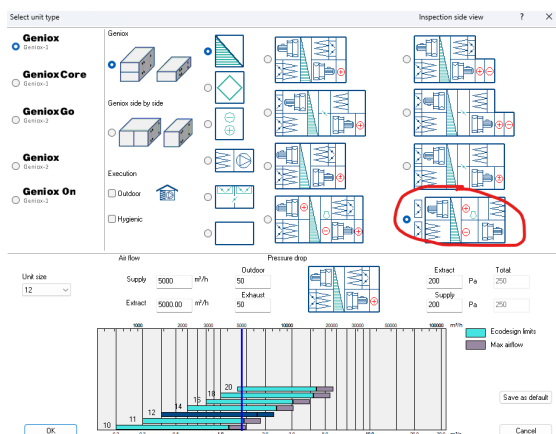
First delivery from week 45 - 2026.

The low GWP heat pump is of the defrost free type, meaning that both coils are at the building side of the unit, related to the heat exchanger. The default refrigerant will be R290, for the activated markets, when a HP DF configuration is selected. For the other markets, the default and only refrigerant option is R410a.



The heat pump can be selected either as a template in the unit selection, but it is also possible to insert the heat pump from the toolbar in the 3D view as always.

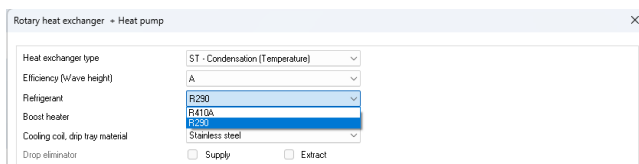
## Template



## Toolbox Icon

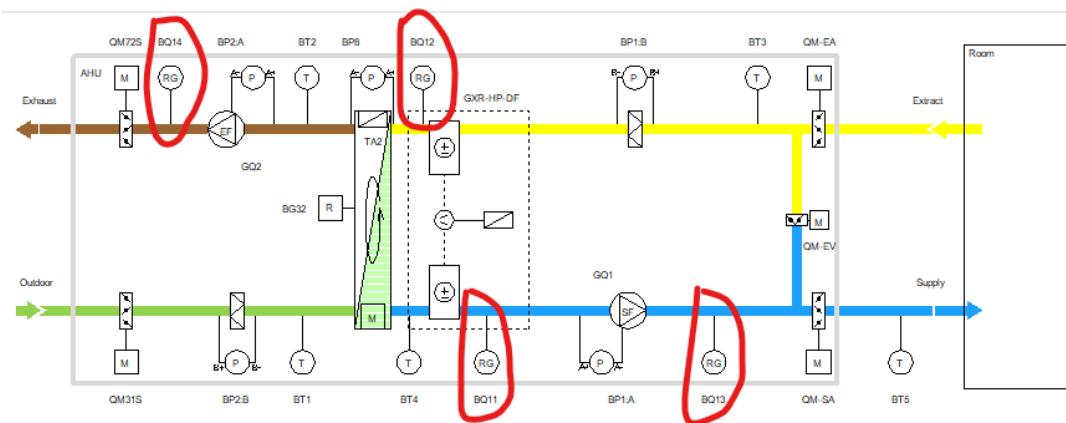


Selection of refrigerant is done from the “Rotary heat exchanger + Heat pump” common selection dialog, under Refrigerant.



The Low GWP heat pump is only available in combination with control system. A compulsory gas evacuation section is added to the unit configuration by default.

The system will also add 4 mandatory gas sensors to control the gas evacuation system.



The launch of Low GWP HP DF in Geniox sizes 10, 11, 12 and 14 is the only the first step of new Low GWP heat pumps.

More unit sizes will be added in the coming release of SystemairCAD.

## Enthalpy counterflow heat exchanger

The Enthalpy counterflow plate heat exchanger will be available in Geniox 10 – 24.

Heat exchangers with METALPIC technology are an innovative and efficient solution for heat recovery in a wide range of applications.

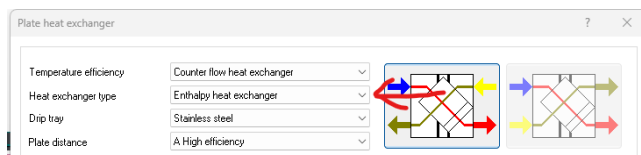
Their high efficiency, durability and ease of installation bring a range of benefits to users, whether in single-family homes, apartment blocks, office buildings, industrial plants, or other types of buildings.

The Enthalpy heat exchanger is a moist recovering type, that will recover moisture from extract to supply air during winter and from supply air to extract air during summer.

Preventing the building from drying out during winter and reducing the humidity inside the building during summer.

- Permits only water vapor transmission through highly selective permeable membrane
- Leakage between airflows guaranteed as 100% of the production is tested for internal leakage
- Certified by Eurovent, Hygiene VDI 6022 and Classification of reaction to fire EN 13501
- Non-sticky material METALPIC

The counterflow enthalpy heat exchanger is selected in the plate heat exchanger selection dialog.

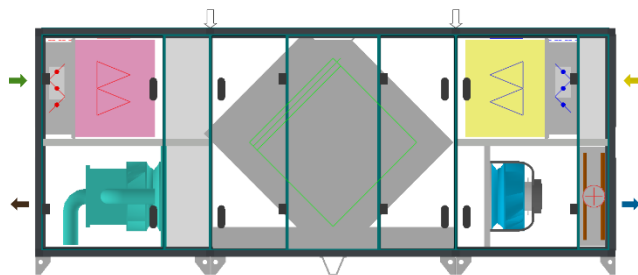


The heat exchanger will reach an EN308 temperature efficiency of 73% at air speeds between 1,6 – 2,1 m/s in the unit depending on the unit size. 1,6 m/s in the small unit sizes and 2,1 m/s in the larger unit sizes. As example, the heat exchanger can reach 73% at 5.200 m<sup>3</sup>/h in a Geniox 14, and 21.000 m<sup>3</sup>/h in a Geniox 24.

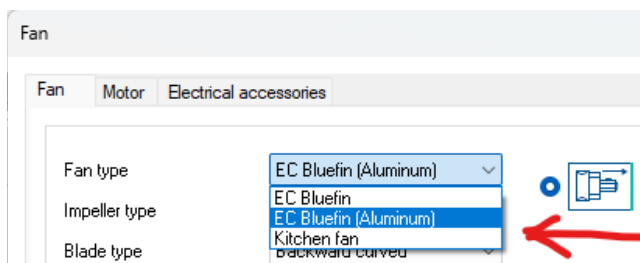
## Kitchen fan's in EC version

A kitchen version of the EC fan's are released in Geniox 1. The old kitchen Plug fan's with AC motors are removed from selection.

The kitchen EC fan can be selected from Geniox 12 to Geniox 24.



The kitchen fan option is selected in the EC fan selection dialog in the fan type drop down menu.



The Kitchen fan is based on a Kitchen fan types from EBMpapst. Not all impeller diameters will be available in all unit sizes.

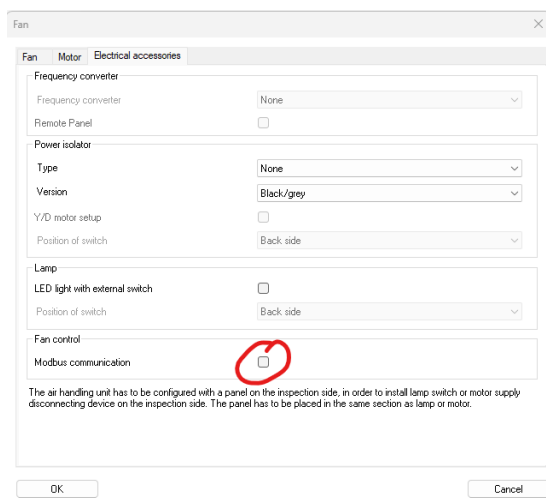
- Geniox 12 - only the medium impeller
- Geniox 14, 22 and 24 - Medium and large
- Geniox 16, 18 and 20 – Small, medium and large

The kitchen fans can only be selected in combination with plate heat exchangers in the extract air.

## Modbus communication, EC fan's

The option to select Modbus communication for EC fans in units without control system is also added to the new release.

The selection is done in the fan selection dialog under "Electrical accessories".



## Cylinder filters

The cylinder filter type is changed from CG to XG cylinders from Camfil. The old CG cylinder was a steel cylinder and XG is a new type of cylinder from Camfil. It is polymer conical cylinder filter casing type, and the pressure drop is reduced significantly compared to the old CG type cylinders.

The XG type will be available in to type "length's" XG2600 and XG3500.

## Heating, cooling and Change over coils.

It is now possible to select stainless steel frames for water coils.

Frame material is selected in the coil selection dialog under material.

Coil	
Optimize value	Air pressure drop
Tube type	Optimize (P3012)
Coil type	Fluid
Fin spacing	Optimize (2.0) mm
No. of rows	0
Circuits	0
External circuits	1
Tube material	Cu
Fin material	0.11 mm Aluminium
Frame material	FeZn
Connection size	FeZn
Lock coil	AISI 304
Extra coil capacity	AISI 316
Valve for heating	1.00
	None

Material options are FeZn, AISI 304 or AISI 316, as you can see in the screen dump above.

## Shipping data in the printout

We added an illustration in the printout for the shipping collies, specifying the position of the collie.

The illustration must be selected in the printout dialog to be included.

Technical specification

- Ecodesign
- Long technical specification ^
  - Flow chart / Access control system - dialogue 2.0
  - Configuration / Access control system - dialogue 2.0
  - Fan curve
  - Overview unit
  - Working point
  - Drawing Wireframe - high quality
  - Collie illustration
  - Summary of notes for printout to customers
  - Summary of notes for print-out to production
  - IX diagram Save as default
- Short technical specification

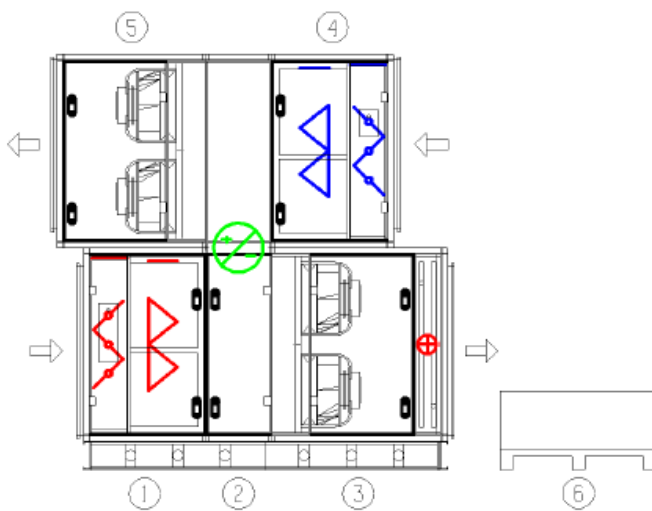
Table of dimensions and weights from the printout.

### Shipping - Collie dimensions and weight

Collies	Dimensions (width x height x length), incl. packaging	Weight, Inc. Packaging	Weight of unit
Collie 1	3082 x 1602 x 1071 mm	335 kg	314 kg
Collie 2	3082 x 3084 x 580 mm	808 kg	797 kg
Collie 3	3082 x 1602 x 1471 mm	660 kg	631 kg
Collie 4	3082 x 1602 x 1071 mm	335 kg	314 kg
Collie 5	3082 x 1602 x 1271 mm	561 kg	537 kg
Collie 6	650 x 600 x 2600 mm	206 kg	194 kg

Base frames are delivered unassembled. The base frame must be assembled on the final site, before sections can be placed on frames.

### Illustration defining positions



### Plug fan's with AC foot motors phase out

This fan type is removed from the fan selection on all markets except the Spanish factory markets.

New European legislation and lack of requests from the market has driven this decision.