



## CLASS 2.0 - Quick Start Guide

### New URL

CLASS 2.0 has a new URL ([class2.systemair.com](https://class2.systemair.com)), click the link below to go there now. (If you go to the old site, you'll be redirected to the new one.)

[Click here access CLASS 2.0](https://class2.systemair.com)

### Already have a CLASS account?

Use your **existing credentials** from CLASS to access the new system.

Use the **email** that's associated with your CLASS account, NOT your username.

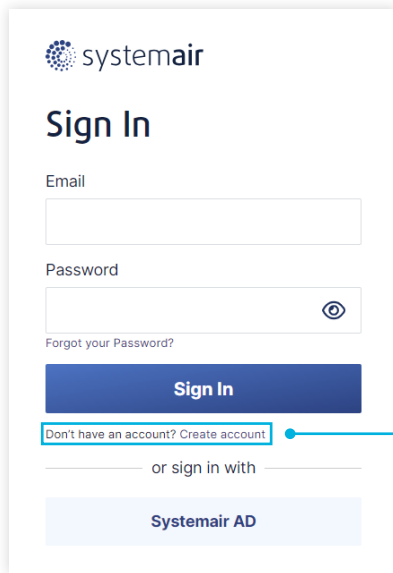
Use the same password from your CLASS account.

Can't remember your password? Click "Forgot your password?" to reset it.

Click "Sign In" when you're ready.

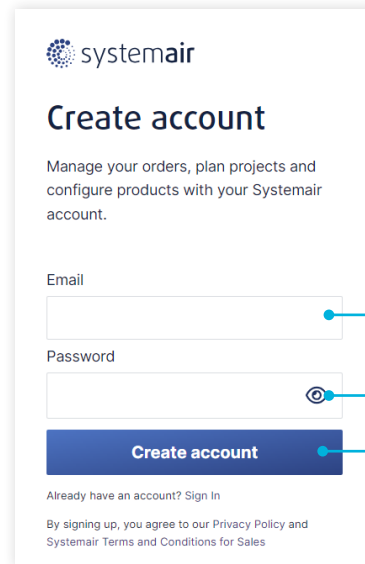
Systemair employees can login using this button.

Don't have an account? Follow the steps below to create one.



The 'Sign In' page features the Systemair logo at the top. Below it is a heading 'Sign In'. There are two input fields: 'Email' and 'Password'. The 'Password' field has an eye icon for toggling visibility. A link 'Forgot your Password?' is located below the password field. A blue 'Sign In' button is positioned below the fields. At the bottom, there is a link 'Don't have an account? Create account' and a section 'or sign in with' followed by a 'Systemair AD' button.

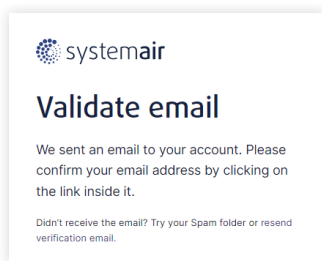
**Step 1**  
Click "Create account" to get started.



The 'Create account' page features the Systemair logo at the top. Below it is a heading 'Create account' and a subheading 'Manage your orders, plan projects and configure products with your Systemair account.' There are two input fields: 'Email' and 'Password'. The 'Password' field has an eye icon for toggling visibility. A blue 'Create account' button is positioned below the fields. Below the button, there is a link 'Already have an account? Sign In' and a paragraph 'By signing up, you agree to our Privacy Policy and Systemair Terms and Conditions for Sales'.

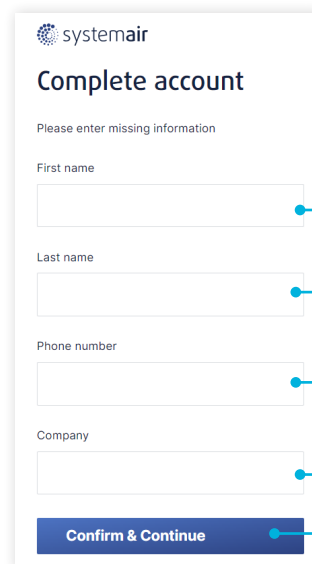
**Step 2**  
Enter your email and create a password

**Step 3**  
Click "Create account"



The 'Validate email' page features the Systemair logo at the top. Below it is a heading 'Validate email'. The main text reads: 'We sent an email to your account. Please confirm your email address by clicking on the link inside it.' At the bottom, there is a link 'Didn't receive the email? Try your Spam folder or resend verification email.'

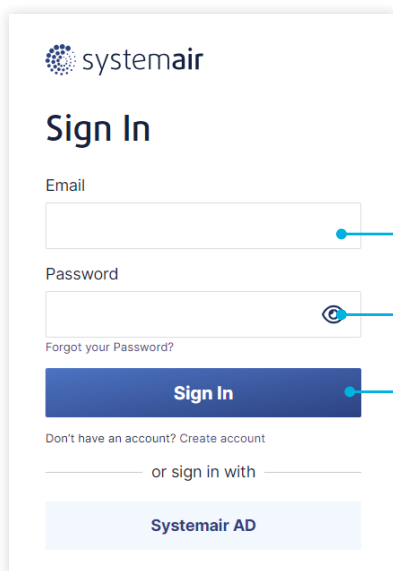
**Step 4**  
Validate your email.  
The validation link will expire in one hour.



The 'Complete account' page features the Systemair logo at the top. Below it is a heading 'Complete account' and a subheading 'Please enter missing information'. There are four input fields: 'First name', 'Last name', 'Phone number', and 'Company'. A blue 'Confirm & Continue' button is positioned below the fields.

**Step 5**  
Fill out the form

**Step 6**  
Click "Confirm & Continue"



This is a duplicate of the 'Sign In' page described in Step 1. It features the Systemair logo, 'Sign In' heading, 'Email' and 'Password' input fields, a 'Forgot your Password?' link, a blue 'Sign In' button, and a 'Don't have an account? Create account' link at the bottom.

**Step 7**  
After pressing "Confirm & Continue" from step 6, the site will reload and ask you to sign in.

Enter your email and the password you just created.

**Step 8**  
Click "Sign In"

**Congrats!**

You have a new account! Keep scrolling to see the new look of CLASS 2.0.

# Project Templates (project location & weather data)

systemair

CLASS 2.0

CatalogueProjectsProject templatesContactGlobal, EnglishPeggy HansenLogout

Project templates

New template

Boston

Create "New template" to get started

Templates will be listed here

Boston

Delete templateDuplicate template

Name

Boston

Location

Country

United States of America

Region

Massachusetts

Location

BOSTON LOGAN

Update air properties

Your location input automatically updates the temperatures using ASHRAE BIN weather data

Air properties

Outside air - Winter

Humidity input

Relative humidity

7.7

%F

Dry bulb temperature

50.0

%

Wet bulb temperature

5.6

%F

Inside air - Winter

Humidity input

Relative humidity

72.0

%F

Dry bulb temperature

72.0

%F

Outside air - Summer

Humidity input

Relative humidity

90.9

%F

Dry bulb temperature

22.8

%

Wet bulb temperature

64.6

%F

Inside air - Summer

Humidity input

Relative humidity

75.0

%F

Dry bulb temperature

75.0

%F

Drop down menus

Switch between 'F and 'C

## Project List (start your project)

systemair

CLASS 2.0

CatalogueProjectsProject templatesContactGlobal, EnglishPeggy HansenLogout

Projects

Create project

Create project from template

Create a new project or create a project template

Search...

My projects

Search for projects

Name	Class number	Quantity	Rep company	Rep office	Status	Created	Created by	Last edit	Last edit by
No projects									

Your projects will be listed here

systemair

CLASS 2.0

CatalogueProjectsProject templatesContactGlobal, EnglishPeggy HansenLogout

Projects

New project

Add building

Add unit

Add equipment

Add accessories

Add notes

Selected units shown here

Add units to your project

Fill out the project information

Project information

Project name

New project

Class number

524020028

Status

Draft

Rep company

Rep office

Rep name

Contact phone

Invoice address

System contact

Freight contact name

Freight contact phone

Freight contact email

Delivery address

Optional controls contact email

Optional controls ship to

systemair

CLASS 2.0

CatalogueProjectsProject templatesContactGlobal, EnglishPeggy HansenLogout

Projects

CAH-1 (1)

Back to projects

Print

Share

Select the unit or return to the project overview

Performance window

Make adjustments to the performance metrics

Unit

Unit Type

Non Compressorized - VCU

Unit Design

Heat Pump with Energy Recovery Wheel

Sound Package

Full IQ Sound Package

Heating

Electric Elements

Cooling

Self Contained - Nominal 36 MBtu (3

Cabinet Model

0

systemair

CLASS 2.0

CatalogueProjectsProject templatesContactGlobal, EnglishPeggy HansenLogout

Projects

CAH-1 (1)

Back to projects

Print

Share

Share and print the project

Print

Select parts to include in printout

CAH-1 (1)

CAH-1 (1)

CAH-2 (1)

Project reports

Summary

Calculation

Electrical drawings

Technical selection

Sequence of operation

Specifications

Mechanical schedule (Freshman units)

Mechanical schedule (Sophomore units)

All unit details

Work order

Unit reports

Configuration

Calculation

Dimensions

Configuration summary

Unit drawings

Unit drawings

LOI/VER - Design Guideline

Specifications

Create printoutCreate printout (PDF file)

Print all the documents you need for your project or unit reports

Print

Select parts to include in printout

CAH-1 (1)

CAH-1 (1)

CAH-2 (1)

Project reports

Summary

Calculation

Electrical drawings

Technical selection

Sequence of operation

Specifications

Mechanical schedule (Freshman units)

Mechanical schedule (Sophomore units)

All unit details

Work order

Unit reports

Configuration

Calculation

Dimensions

Configuration summary

Unit drawings

Unit drawings

LOI/VER - Design Guideline

Specifications

Create printoutCreate printout (PDF file)

Share the project with clients or colleagues

Share project

sside.miche@systemair.net

Read-only

Share

Grant read-only or editing rights

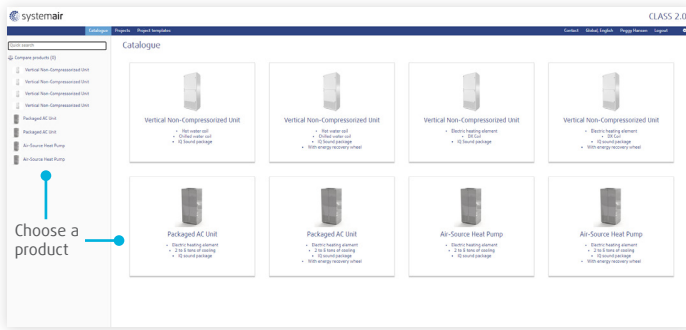
Email

peggy.hansen@systemair.net

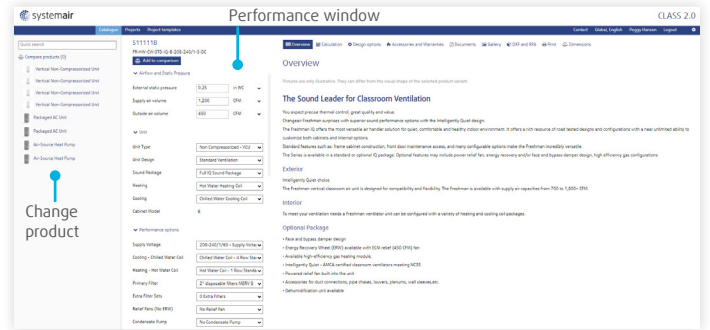
sside.miche@systemair.net

## Catalogue (another way to start your project)

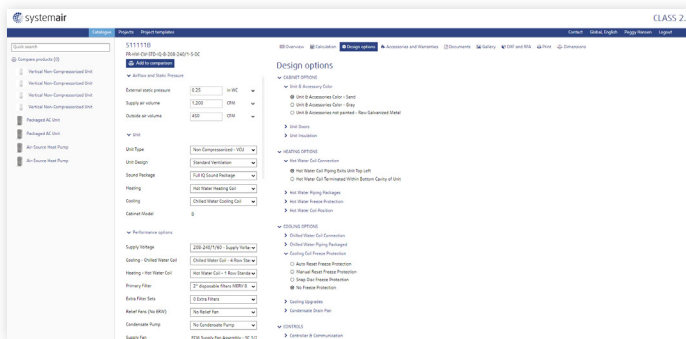
Get everything you need for any projects on one simple screen. Overview of the product, calculations, specs, accessories, documents, DXF and RFA files and more.



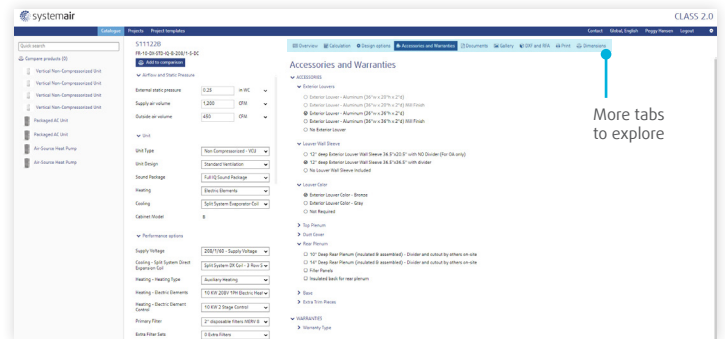
Product list



Product overview



Design options



Accessories and Warranties

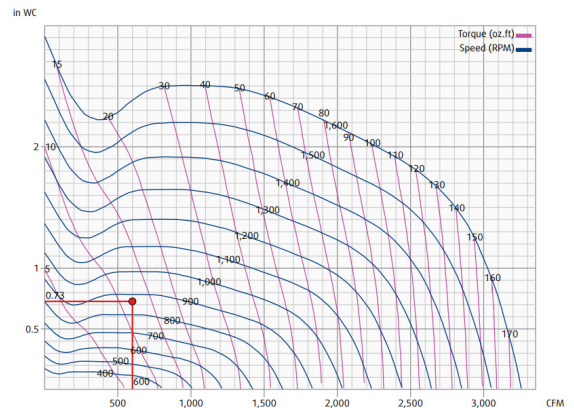
## Extra tidbits

You can change the units for metrics

### ▼ Airflow and Static Pressure

External static pressure	0.25	in WC	▼
Supply air volume	1,200	CFM	▼
Outside air volume	450	CFM	▼

Project and unit reports have fan curves



## Need help?

Please [click here](#) to reach out to our Technical Applications Specialists



## Ready to get started?

[Click here to access CLASS 2.0](#)

