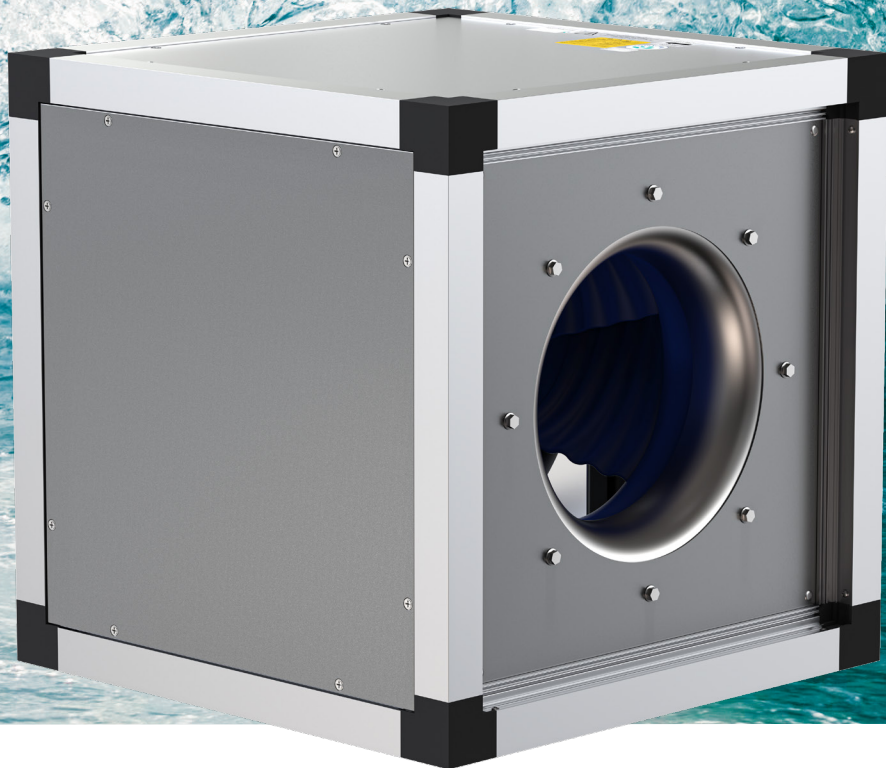


Fans

MUB Fans

Strength, silence, and C5 protection without limits





MUB Fans

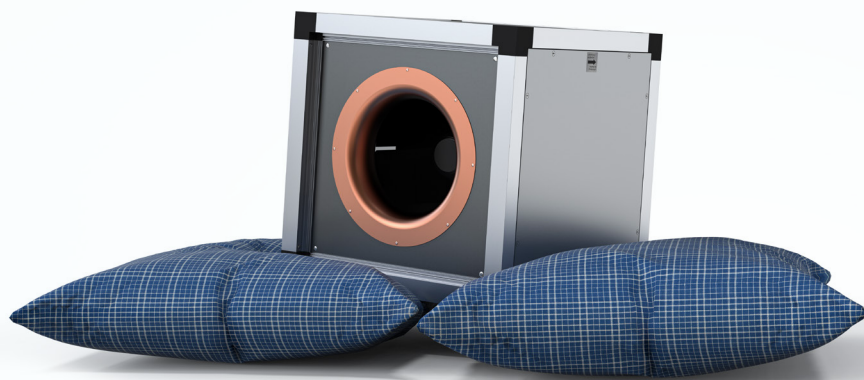
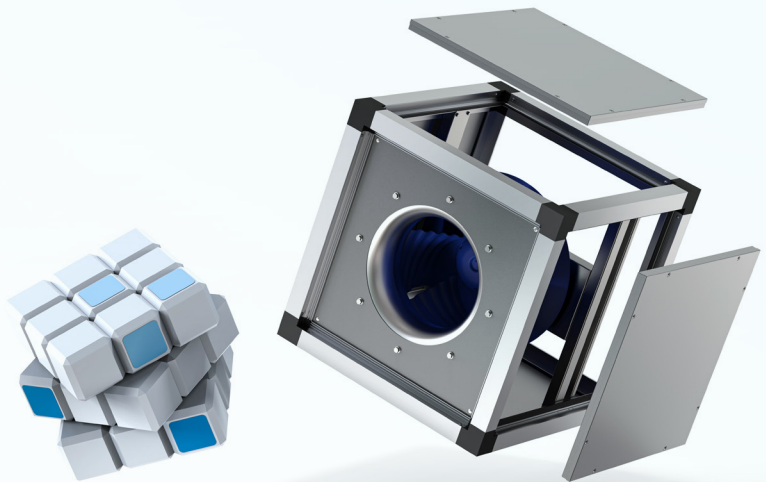
Corrosion fears our MUB fans

Set a new benchmark for performance, reliability, and flexibility with Systemair's MUB fans solutions. Developed for customers who demand robust, future-proof ventilation, these products combine top-tier corrosion resistance (C5), low noise, and smart installation features to meet even the toughest project requirements.

A comprehensive selection of accessories ensures precise installation and effortless connection to your duct system, delivering tailored solutions for every application.

Adjustable

Adjustable discharge directions combined with the ability to mount the unit in any position allow MUB to adapt seamlessly to specific project requirements, while removable panels make on-site customisation and maintenance fast and straightforward.

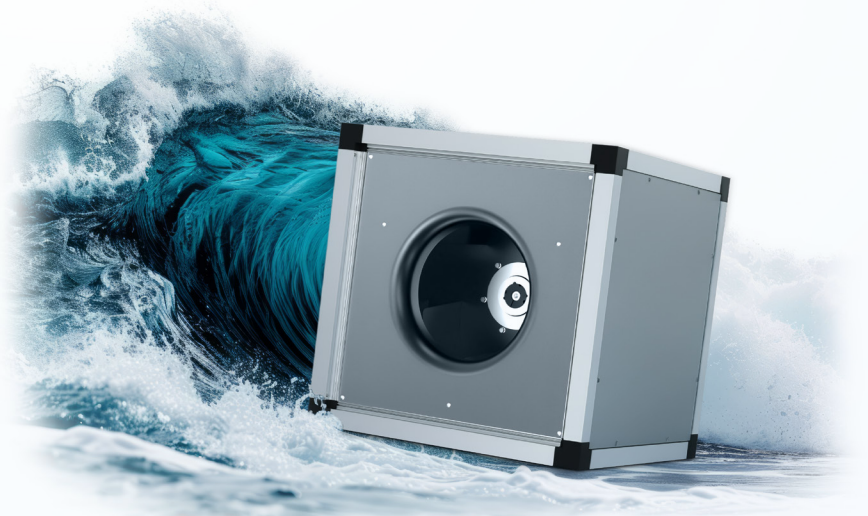


Quiet

MUB's acoustically and thermally insulated casing ensures ultra-low noise levels for comfort in all environments.

Strong

Constructed with ZM310 panels, MUB achieves certified C5 corrosion resistance, making it ideal for coastal, industrial, and other highly aggressive locations.



MUB Fans

Why C5 corrosion resistance makes all the difference

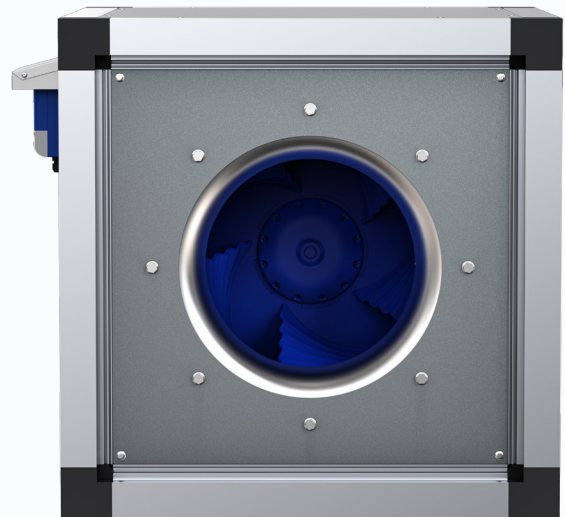
Systemair's MUB fans are now equipped with the advanced ZM310 panel coating, delivering industry-leading protection for projects in aggressive or highly corrosive environments. Built for reliability and delivering future-proof performance, the new MUB panels achieve C5 corrosion resistance, the highest standard defined by ISO 12944 and ISO 9223.



Learn more about corrosion protection

Key Benefits

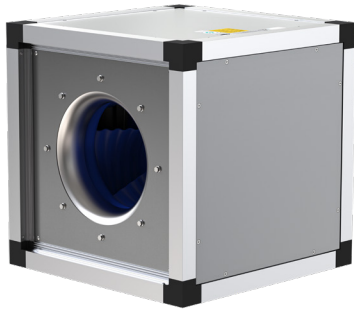
- ✓ Unmatched corrosion resistance**
Up to three times higher protection compared to galvanised steel, ensuring long-lasting performance in even the harshest conditions.
- ✓ Self-healing technology**
Enhanced coating provides a self-healing effect at cut edges, maintaining integrity and extending service life.
- ✓ Built for demanding applications**
Designed to withstand severe exposure, supporting consistent, reliable operation for years to come.



C3 vs. C5 in a nutshell

Feature	C3 (Medium)	C5 (Very High)
Environment	Urban/industrial, moderate SO ₂	Coastal/offshore, chemical/industrial
Humidity	Occasional high, not constant	Constant high, condensation possible
Pollutants	Moderate	Very high, including salt/chemicals
Example Applications	Urban steelwork, standard HVAC	Marine, chemical, sewage plants, C5 HVAC
Material Used	Standard coatings/metals	Stainless steel or ZM310

MUB MUB EC



V max:	Pa max:
31.000 m ³ /h	1.560 Pa

- High efficiency across the range
- Speed controllable
- Removable side panels
- Discharge direction adjustable on site
- Installation in any mounting position
- Low sound level

Casing

Self-supporting aluminium structure with corners of PA6 highly resistant to impacts. Acoustic and thermal insulation with 30 mm mineral wool.

Motor

MUB: Depending on the version, equipped with external rotor motors, voltage-controllable, or standard IE3 motors controllable by frequency converter.

MUB EC: Energy-efficient EC external rotor motors with a high efficiency.

Impeller geometry

Centrifugal impeller with backward curved blades.

Output control

MUB: Depending on the version, control is possible power by transformer, D/Y connection or frequency converter.

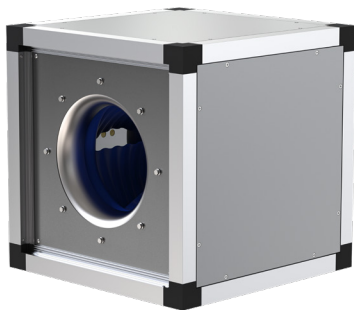
MUB EC: 100 % controllable by 0-10 V signal.

Motor protection

MUB: Integrated thermal contacts with output lines for connection to motor protection unit. Standard motors are equipped with thermistors PTC with cables for connection to a motor protection device.

MUB EC: Integrated into motor electronics.

MUB-CAV/VAV



V max:	Pa max:
31.000 m ³ /h	1.560 Pa

- High efficiency across the range
- Speed controllable
- Removable side panels
- Discharge direction adjustable on site
- Installation in any mounting position
- Low sound level
- For constant airflow or constant pressure applications

Casing

Self-supporting aluminium structure with corners of PA6 highly resistant to impacts. Acoustic and thermal insulation with 30 mm mineral wool.

Motor

Low consumption and high efficiency EC external rotor motors.

Impeller geometry

Centrifugal impeller with backward curved blades.

Output control

MUB-VAV/CAV fans are equipped with a sensor control module for constant airflow. It also includes a communication kit for the constant pressure.

Motor protection

Integrated into motor electronics.

MUB/T MUB/T EC MUB/T ECO



V max:	Pa max:
40.000 m ³ /h	1.700 Pa

- Medium temperature up to 120 °C
- Multi-functional use (e.g. for kitchen exhaust air)
- High efficiency across the range
- Motor outside the air stream
- Discharge direction adjustable on site
- MUB/T and MUB/T-EC: with a door for easy maintenance and cleaning
- MUB/T and MUB/T-EC: with on-off switch for safe maintenance

MUB/T-S MUB/T-S EC



V max:	Pa max:
37.500 m ³ /h	1.500 Pa

- Medium temperature up to 120 °C
- Direct inline airflow - easy integration into ductwork to save space
- Low sound level
- Multi-functional use (e.g. for kitchen exhaust air)

Casing

Self-supporting aluminum structure with corners of PA6 highly resistant to impacts. Acoustic and thermal insulation with 30 mm mineral wool. Bottom panel shaped as a condensate tray and with a pre-mounted 1" drain plug.

Motor

MUB/T: Equipped with standard IE3 motors, speed controllable by frequency converter.

MUB/T EC: Energy-efficient EC motors with high efficiency.

Impeller type

Centrifugal impeller with backward curved blades.

Output control

MUB/T: speed control by frequency converter

MUB/T EC: 100 % controllable by 0-10 V signal

Motor protection

MUB/T: Standard motors are equipped with PTC thermistors with cables for connection to a motor protection device.

MUB/T EC: Integrated in the motor electronics.

Casing

Self supporting aluminum frame with highly impact - resistant PA6 corners. Acoustic and thermal insulation with 30 mm mineral wool. The bottom panel is shaped as a condensate tray and incorporates a pre-mounted 1" drain plug.

Motor

MUB/T-S: Equipped with standard IE3 motors, speed controllable by frequency converter.

MUB/T-S EC: Energy efficient EC external rotor motors with high efficiency.

Impeller type

Centrifugal impeller with backward curved blades.

Output control

MUB/T-S: power control by frequency converter

MUB/T-S EC: 100 % controllable by 0-10 V signal

Motor protection

MUB/T-S: Integrated PTC thermistors for connection to a motor protection device.

MUB/T-S EC: Integrated in the motor electronics.

MUB/F



V max:	Pa max:
18.000 m ³ /h	1.200 Pa

- Speed controllable by frequency converter
- Discharge direction adjustable on site
- Low sound level
- Certified according to DIN EN 12101-3
- Dual use: for smoke extract (F400/2h) and daily ventilation

The smoke extract fans MUB/F are designed for dual use: for smoke extract (F400/2h) and daily ventilation.

Casing

Self-supporting construction made of a profiled steel frame. Double skin panels made of galvanized steel with a 20 mm mineral wool acoustic and thermal insulation.

Motor

One or two speed IEC standard motors.

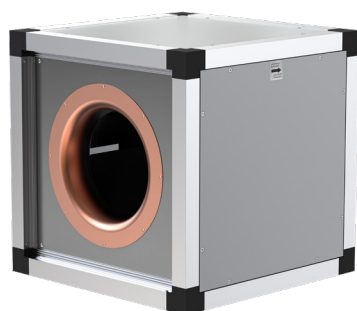
Impeller geometry

Centrifugal impeller with backward curved blades made of galvanized sheet steel.

Output control

Speed controllable by frequency converter.

MUB-EX



V max:	Pa max:
9.700 m ³ /h	460 Pa

- Certified according to ATEX directive 2014/34/EU
- Discharge direction adjustable on site
- Low sound level
- Voltage controllable external rotor motor
- Motor protection by PTC thermistors
- II 2G Ex h IIB + H² T3 Gb B

Casing

Self-supporting aluminium frame and high-impact resistant PA6 corners. The double skin panels are made of galvanized sheet steel with 30 mm mineral wool acoustic and thermal insulation.

Motor

Voltage controllable, explosion proof, 3-phase external rotor motor. Separate "Ex-e" connection box available as an accessory.

Impeller geometry

Backward curved centrifugal impeller made of aluminum, dynamically balanced according to DIN ISO 21940-11.

Output control

Speed controllable by a 5-step transformer.

Motor protection

Integrated PTC thermistors, to be connected to a motor protection device. Can be used for temperature classes T1, T2 and T3. Exhaust of explosive gases in Zone 1 and Zone 2, and groups IIA and IIB plus hydrogen H² is possible.

