

Metso

Equipment Protection Services (EPS)

Aggregates services

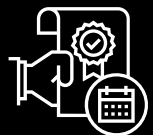
August 1, 2023

RESTRICTED



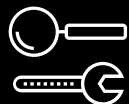
Equipment Protection Services (EPS)

Additional protection for your valuable production assets



Extended
warranty

Decreased
productivity
risk



Inspections & Expert
recommendations

Secured
asset
value



Spare & wear
parts

Improved
equipment
availability



Metrics

Access to critical
equipment data

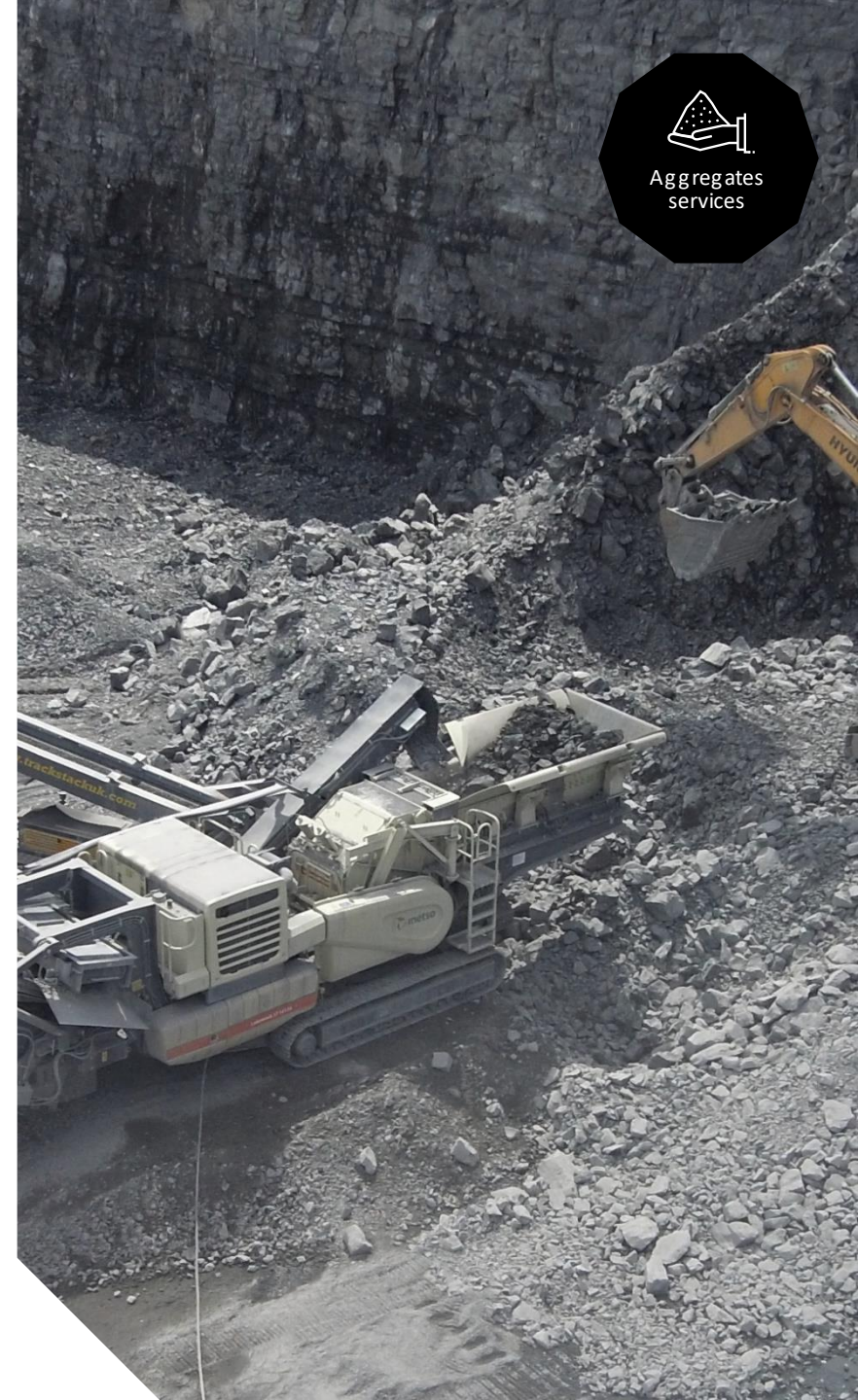
Metso

EPS contract

- Fixed 5 year /10,000h* from the equipment start-up
- The scope of services:
 - Extended warranty
 - Certified inspections every 1,000 h operating hours**
 - Metrics for mobile equipment
 - Spare and wear parts according to the price list
- Pricing:
 - Extended warranty invoiced with equipment delivery
 - Inspections, spares and wears invoiced separately
 - Metrics hardware invoiced separately

*Whichever comes first

**If annual operating hours <1,000h then minimum 1 inspection per year



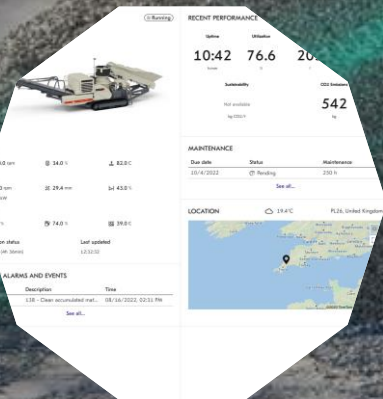
Metso Metrics

Next generation remote monitoring solution for aggregates crushers and screens



Remote operation

24/7 access to real-time fleet data



Alarms & recommended actions

Improved troubleshooting capabilities

| ALARMS & EVENTS | |
|--|--------|
| Reason | Export |
| Description | |
| 11 - No connection to engine | |
| 66 - Crusher cover is open or Transfer | |
| KS8 - Clutch speed Secondary shaft s | |

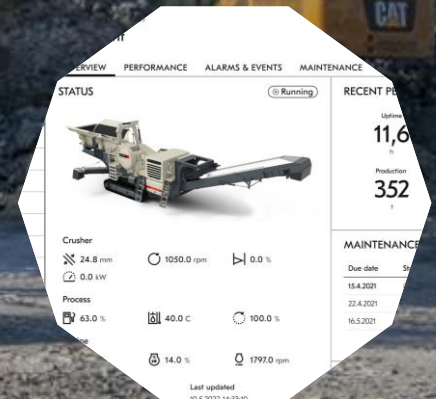
Access to maintenance programs & logbook

Easier maintenance planning and support for decision making

| MAINTENANCE | | |
|----------------------|-------------------------|-------------------------|
| Time range | 2022-08-18 - 2022-08-25 | |
| Created by | Maintenance plan | Status |
| System | 250 h | Overdue (9 days ago) |
| MAINTENANCE | | |
| Created by | Maintenance plan | Status |
| System | Daily | Pending (due in 0 days) |
| System | Daily | Pending (due in 1 days) |
| System | 250 h | Pending |
| System | 50 h | Pending |
| System | 50 h | Pending |
| System | 50 h | Pending |
| System | 50 h | Pending |
| System | 1000 h | Pending |
| System | 50 h | Pending |
| Maintenance plan | | Status |
| No past maintenances | | |

Key operating data

Access to equipment performance, utilization data and reports



Metso Metrics

Boost your crushing performance

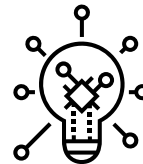
Track CO2 footprint and fuel consumption for a greener future together



Securely access your live data 24/7 from anywhere



Make decisions based on the right data



Stay ahead of the curve with your maintenance activities



Improve safety and best practices



Stay connected to your fleet through geolocation



Leverage the expertise at your service



Scheduled 1,000h inspections by certified inspectors

- Scheduled inspections ensure machine is in good condition and possible developing issues can be detected before impacting production
- The standard inspection includes in-load and stopped equipment inspection. Inspection findings with recommendations are documented and inspection report is provided after inspection
- Metso and official distributor field service engineers are trained through Metso's certification program
- Certification program ensures our inspectors hold themselves to highest performance and safety standards



Metso EPS



Extended warranty coverage

Conditions

Year 1

Up to 2
years /
4,000
hours*

- Standard warranty coverage
- Full coverage of STD freight
- Full coverage of labor

Year 2

Year 3

From 2
years /
4,000
hours up
to 5 years
/ 10,000
hours

- 100% parts coverage of selected main components
- Standard freight coverage of selected main components
- Supervision of service work included

Year 4

Year 5

* Except CAT, Volvo engines warranty on Lokotracks which is extended to 2 years or 3 000 hours, whichever comes first

- Commissioning and Warranty Registration (CWR) form filled at equipment start-up
- Usage of genuine Metso spare and wear parts** ordered from a Metso sales representative
- Metso Standard Inspection minimum every 1,000 operating hours
- Maintenance log filled and maintained by the user

** Or well defined parts manufactured by official partners, agreed by the Metso Aggregates Product Management

EPS coverage

Nordberg C-Series jaw crushers

Covered equipment

C80 C96 C100 C106 C116 C120 C130 C150 C160 C200

Covered components from 2 years / 4,000 hours up to 5 years / 10,000 hours



Crusher frame

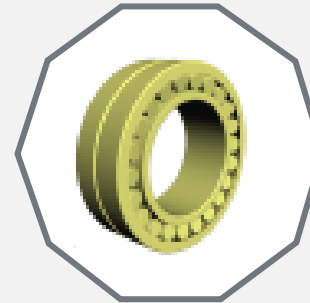
** Side plates,
front & rear headers*



Pitman



Eccentric
shaft



Bearings

** Pitman and frame (4 pieces)
Automatic lubrication
device mandatory*



Flywheels

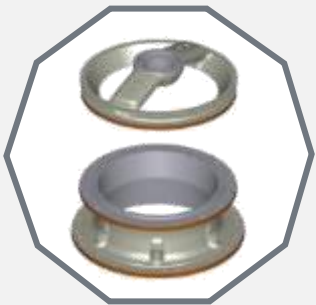
EPS coverage

Nordberg GP Series cone crushers

Covered equipment

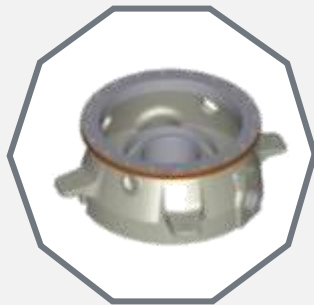
GP100 GP220 GP330 GP550 GP100S GP300S GP500S

Covered components from 2 years / 4,000 hours up to 5 years / 10,000 hours



Upper frame &
intermediate frame

** Secondary
crushers only*



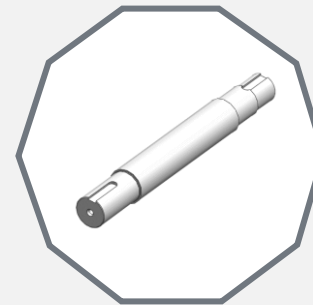
Lower
frame



Head



Main shaft,
gear & pinion



Countershaft

EPS coverage

Nordberg HP Series cone crushers

Covered equipment

HP100 HP200 HP200e HP3 HP300 HP4 HP400 HP5 HP500 HP6
HP900

Covered components from 2 years / 4,000 hours up to 5 years / 10,000 hours

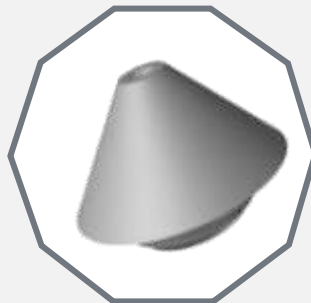


Bowl &
adjustment ring



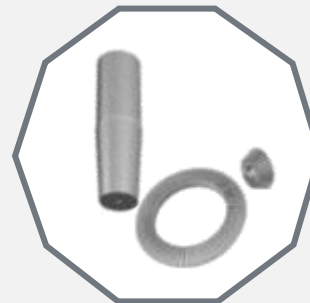
Main
frame

** Delivered with main shaft
and countershaft bushings*

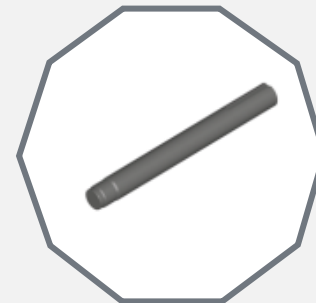


Head

** Including head
bushings*



Main shaft,
gear & pinion



Countershaft

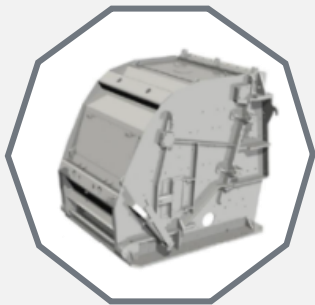
EPS coverage

Nordberg NP Series horizontal shaft impactor crushers

Covered equipment

NP1415 NP1620 NP13 NP15 NP20

Covered components from 2 years / 4,000 hours up to 5 years / 10,000 hours



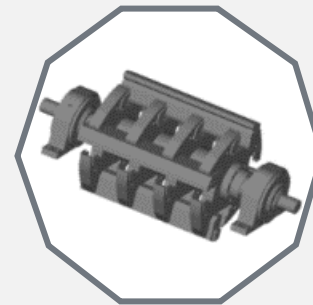
Frame assembly

*Rear and front frames.
Middle frame
(NP13, NP15, & NP20 only)
Side liners not included*



Breaker plates

*Including cassettes
(NP13, NP15, & NP20 only)
Breaker plate liners not
included*



Rotor assembly

*Including bearings
Blow bars not included*

EPS coverage

Barmac B Series vertical shaft impactor crushers

Covered equipment

B6150SE

B7150SE

B9100SE

Covered components from 2 years / 4,000 hours up to 5 years / 10,000 hours



Hopper
assembly

** Including head bushings*



Roof
assembly &
roof lifter
assembly



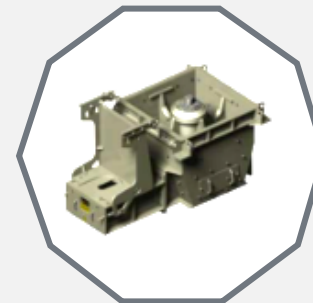
Spider
assembly

*Wear skirt & feed tube
not included*



Crushing
chamber

*Gussets or cavity ring
not included*



Crusher
base

*Wear parts, rotor and
shaft line assembly
not included*

EPS coverage

Metso HRBM & DET Series push feeders

Covered equipment

HRBM 60-12

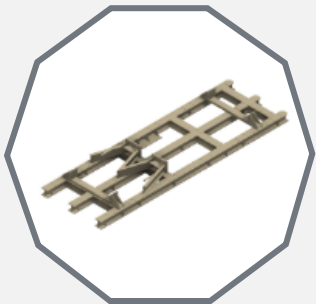
HRBM 60-15

HRBM 65-17

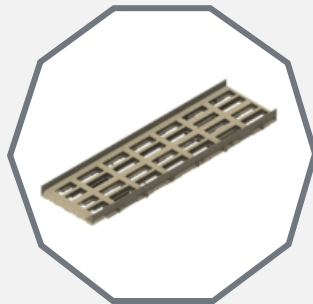
HRBM 70-19

DET10-38

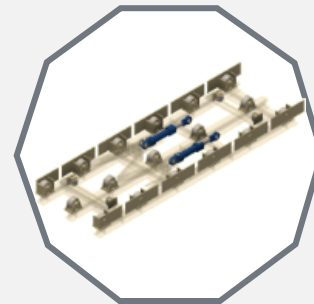
Covered components from 2 years / 4,000 hours up to 5 years / 10,000 hours



Chassis frame



Drawer



Roller assembly

Including roller bearings

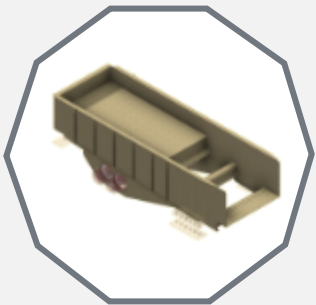
EPS coverage

Metso PF & VF Series feeders, VG Series scalpers

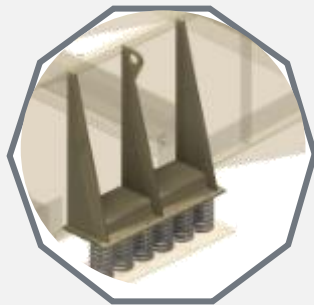
Covered equipment

| | | | | | | | | |
|-------|-------|-------|-------|-------|-------|-------|-------|-------|
| PF525 | PF544 | PF561 | PF635 | PF661 | VF544 | VF561 | VF661 | VF866 |
| VG527 | VG540 | VG635 | VG645 | VG745 | VG860 | | | |

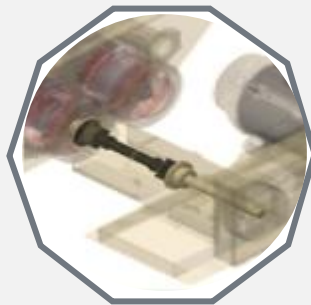
Covered components from 2 years / 4,000 hours up to 5 years / 10,000 hours



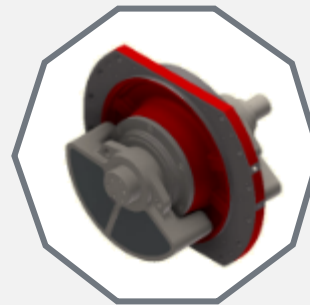
Basic body
assembly



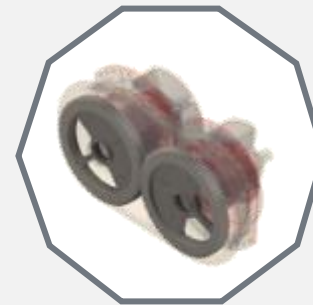
Coil springs
& spring
brackets



Cardan shaft,
flanges &
jack shaft
*(drive unit). Sheaves and V-
belts not included*



MV
vibrators



Gears

EPS coverage

Metso CVB, ES & TS Series vibrating screens

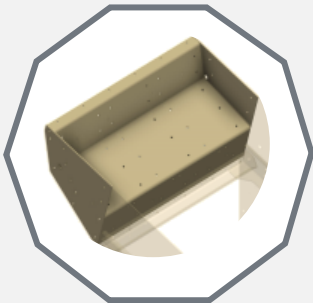
Covered equipment

CVB

ES

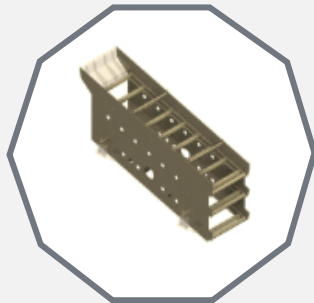
TS

Covered components from 2 years / 4,000 hours up to 5 years / 10,000 hours



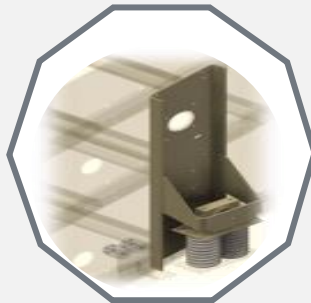
Feed box

*Liners & impact bars
not included*

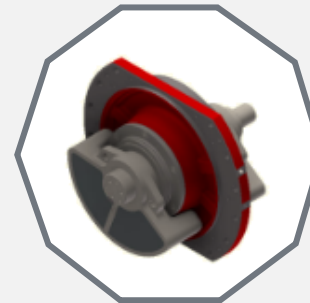


**Basic body
assembly**

*Side plates, deck frames
& cross members*



**Coil springs
& spring brackets**



MV vibrators

*Automatic lubrication
device mandatory*



**Cardan shaft &
flanges**

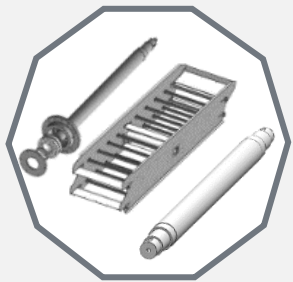
EPS coverage

Lokotrack mobile crushing plants

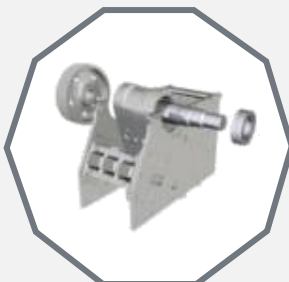
Covered equipment

LT96 LT96S LT106 LT106S LT116 LT116S LT120 LT120E LT130E LT220D LT330D
LT1110 LT1110S LT1213 LT1213S LT200HP LT200HPS LT200HPX LT300HP/GP LT300HPS/GPS
LT7150

Covered components from 2 years / 4,000 hours up to 5 years / 10,000 hours



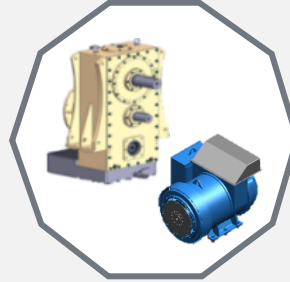
**Main components
of the installed
screen and/or
feeder**
*(defined for each type
of screen or feeder)*



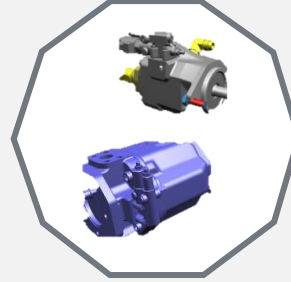
**Main components
of the installed
crusher**
*(defined for each
type
of crusher)*



**Main frame
conveyor
frames & final
drives**
*Track shoes and rollers
not included*



**Gearbox, main
generator**



**Hydraulic
motors & pumps,
electric motors**



**ePower
equipment**
*Engine warranty
according to Cat® /
Volvo*



EPS coverage

Lokotrack mobile screening plants

Covered equipment

ST2.3

ST2.4

ST2.8

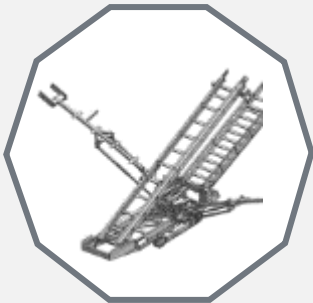
ST3.5

ST3.8

ST4.8

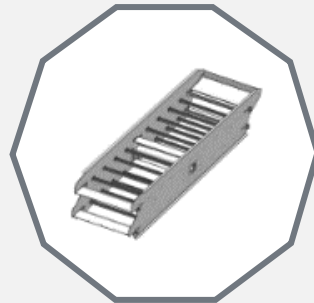
ST4.10

Covered components from 2 years / 4,000 hours up to 5 years / 10,000 hours



Main frame,
conveyor frames,
& final drives

*Track shoes and rollers
not included*

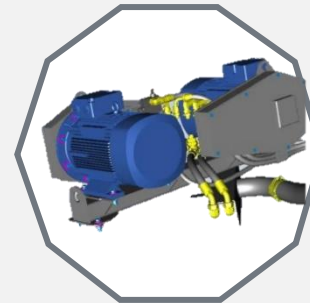


Screen main
assembly

*Side plates, deck frames
& cross members*



Screen shaft,
bearings &
housings



Electric motors
for ePower



Hydraulic pumps &
motors

*Engine warranty according
to CAT / Volvo*



EPS coverage

NW Rapid portable mobile plants

Covered equipment

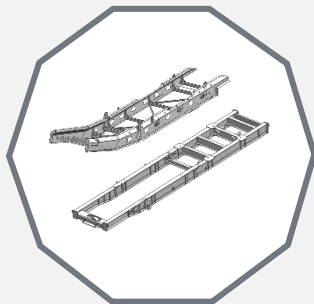
| | | | | | | | | |
|----------|-------------------------|-----------------------|---------|----------|----------|----------|----------|----------|
| NW106 | NW116 | NW120 | NW130 | NW200HPD | NW200HPS | NW220GPD | NW220GPS | NW300HPS |
| NW330GPS | NW7150D single drive | NW7150D dual drive | NW7150S | NW1213 | NW1855D | NW1855S | NW2060S | |

Covered components from 2 years / 4,000 hours up to 5 years / 10,000 hours



Main components
of the installed
crusher

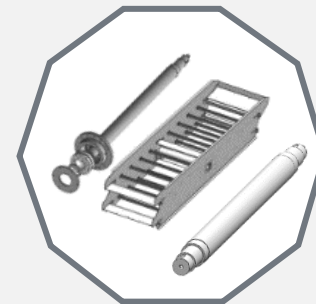
*(defined for each
type of crusher)*



Main frame, conveyor
frames & final drives



Electric motors



Main components
of the installed
screen and/or feeder

*(defined for each type
of screen or feeder)*

Diesel engine warranty for Lokotrack mobile plants

- Cat® engine warranty is 2 years or 3,000 hours, whichever comes first
- Cat® Extended Engine Coverage 10,000h or 5 years (Cat® C7.1 8,000h or 5 years)
- Volvo engine warranty is 2 years or 3,000 hours, whichever comes first



Metso

A decorative graphic consisting of a 6x5 grid of small white dots on a solid red background, located on the left side of the slide.

Exclusions and conditions

RESTRICTED



Exclusions to coverage

The following list* of consumables and wear items are not included in EPS:

- Working crusher wear parts
(jaw dies, bowl liners, mantles, breaker plate liners, blow bars, complete rotor, etc.)
- Protective crusher wear parts
(cheek plates, pitman and frame protection plates, frame liners, spider arm, counterweight guards, etc.)
- Screening media
(grizzly bars, wire meshes or synthetic media, wear protection, etc.)
- Synthetic parts
(rubber or polyurethane wear protections, seals, dampers)

- Mobile plant feed hopper & track shoes
- Conveyor belts and drive belts (V-belts) not included
- Consumables
(toggle plate, hydraulic cylinders, filters, valves, etc.)
- Electrical components
(Alternators, breakers, fuses, switches, sensors etc.)
- Hydraulic hoses and fasteners

* Including but not limited to

Customer conditions

- ✓ Like for a standard warranty, a “**Commissioning and Warranty Registration**” form has to be filled during the equipment commissioning to start the warranty period.
- ✓ A scheduled **Metso Standard Inspection** has to be performed by a **certified inspector** every 1,000 hours and minimum once a year.
- ✓ The **Maintenance log** has to be filled by the user. Remote monitoring electronic logs from Metso Metrics can be used, but as a minimum one or the other will need to be kept up to date and available for review.
- ✓ It is mandatory to use **wear and spare parts supplied by Metso** official sales representatives. Spare parts are exclusively Metso OEM, wear parts are Metso OEM or in specific cases, well defined parts manufactured by Metso official partners.

Why these conditions?

The “**Commissioning and Warranty Registration**” form is the only document which validate the proper functioning of the equipment when it has been delivered. The warranty period starts at the date of its signature.

The scheduled **Metso Standard Inspection**, done at regular time intervals by Metso certified inspectors, permits to check the condition and proper functioning of the equipment, and then to avoid dysfunctions which could generate production stops or critical parts damages.

The **Maintenance log** permits, before the inspection, to discuss with the certified inspector about the equipment functioning, eventual issues encountered, and then to improve the diagnosis.

Summary

EPS provides you with

- Secured asset value and performance
- Additional protection against costly breakdowns
- Support and peace of mind
- OEM certified inspectors

Additional
protection for
your valuable
production
assets



Metso

Partner for positive change



[metso.com](https://www.metso.com)

RESTRICTED

