

Advanced Rotortug 80-32

STANDARD



» PICTURE OF SIMILAR VESSEL

GENERAL

Basic functions	Push-pull, escorting, towing, Ø fire-fighting
Classification	Lloyds Register *100A1, Tug, Ø Fire-Fighting 1 with water spray, IWS, (specified) Coastal Service [x]LMC, UMS
Painting	Epoxy paint system

DIMENSIONS

Length overall	32.90 m
Beam overall	13.20 m
Beam moulded	12.60 m
Depth moulded	4.80 m
Draught	6.40 m
Displacement (98%)	850 ton
Gross tonnage	495 GT

TANK CAPACITIES

Fuel oil	204.0 m ³
Fresh water	32.8 m ³
Lubrication oil thrusters	2.4 m ³
Lubrication oil engines	2.4 m ³
Used oil	5.4 m ³
Sewage	8.8 m ³
Oily water	4.6 m ³
Sludge	4.6 m ³
Voids	34.0 m ³

PERFORMANCES

Bollard pull ahead	80.0 t
Speed	13.0 kn

PROPULSION SYSTEM

Main engines	3x Caterpillar 3512C TA/HD+
Total Power	5295 bkW (7100 bhp) @ 1800 rpm
Thrusters	3x Schottel SRP 1512 FP
Propeller	3x 2350 mm

AUXILIARY EQUIPMENT

Generator sets	2x Caterpillar C9.3, 200 ekW, 250 kVA, 1500 rpm
Firefighting system	Firepump with clutch on portside main engine
Capacity pump	Ø Pump 2800 m ³ /hr @ 11 bar with waterspray
Fuel transfer pump	Azcue CA50/7A, 30 m ³ /hr
Fuel separator	Alfa Laval, MAB104, 1000 ltr/h
Sewage treatment system	Ecomar 32, 3200 ltr/day
Cooling system	Box cooling

DECK LAY-OUT

Anchor	1x 585 kg HHP, AC-14
Chain	22 mm stud-link anchor chain, length 165 m
Anchor winch	DMT, combined with forward towing winch
Towing winch forward	DMT, ATW-E22-K2, electrical driven, single drum
Capacity	Pull 30 ton @ 0-15 m/min, 10 ton @ 0-45 m/min Wire capacity 250 m for Ø 70 mm, 220 m for Ø 88 mm Break holding force 225 ton
Towing winch aft	DMT, SHW-E300KN, electrical driven, single drum
Capacity	Pull 30 ton @ 0-15 m/min, 10 ton @ 0-45 m/min Wire capacity 250 m for Ø 70 mm, 220 m for Ø 88 mm Break holding force 225 ton
Fendering	D-fender at sides, W-fender at stern and foreship, Single cylindrical fender at stern and bow

ACCOMMODATION

For 6 persons, insulated and finished with modern linings, acoustical ceiling in the wheelhouse, floating floors and air-conditioned. Two cabins for officers and two double crew cabins. Galley, mess/dayroom, switchboard room, store, workshop, laundry and sanitary facilities are fitted.

NAUTICAL AND COMMUNICATION EQUIPMENT

Searchlight	2x Glamox, SL40 R5
Radar system	2x JRC, JMR-5410-6X-BB
Magnetic compass	1x Cassens & Plath, Reflecta 3
GPS compass	1x JRC, JLR-21
GPS	1x JRC, JLR-8400
Autopilot	1x Alphatron, AlphaSeaPilot MFC
ECDIS	1x Transas, Premium
Echosounder	1x JRC, JFE-380/25
Speedlog	1x JRC, JLN-740N
VHF	2x Cobham, RT 6222
MF/HF	1x Cobham, Sailor 6310
VHF handheld	2x Cobham, Sailor SP3520
Navtex	1x JRC, NCR-333
AIS	1x JRC, JHS-183
Windsensor	1x Observer, OMC-116
Watch alarm	1x Alphatron
Intercom	1x Phontech, CIS3102
EPIRB	1x Jotron, Tron60GPS
SART	1x Jotron, SART20

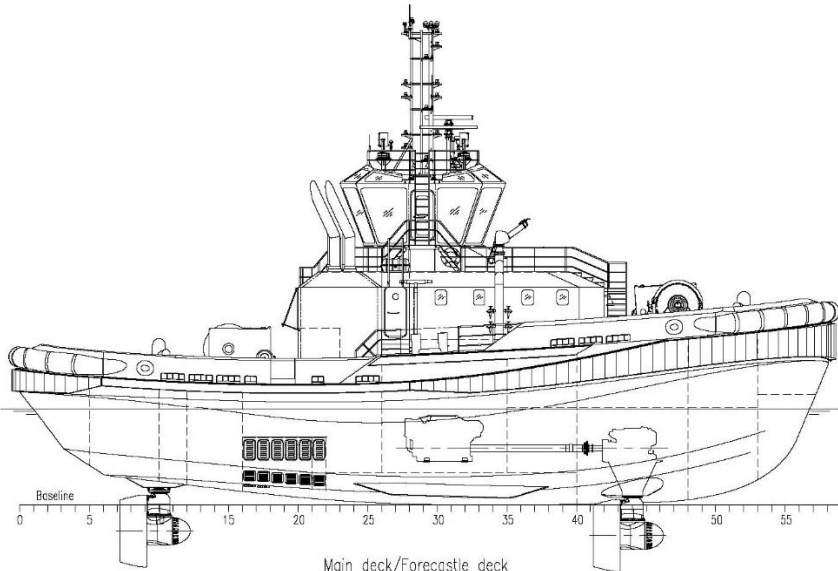
Ø = Optional equipment

Advanced Rotortug 80-32

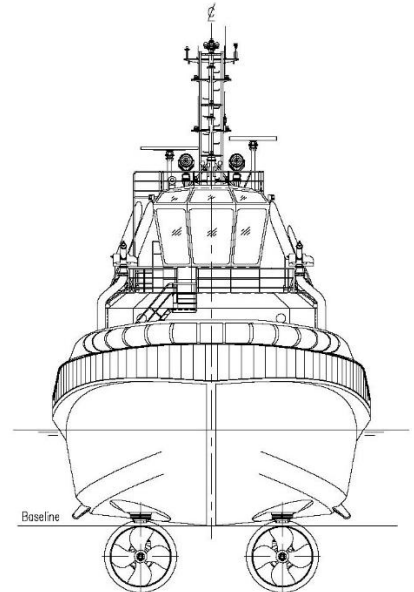
STANDARD



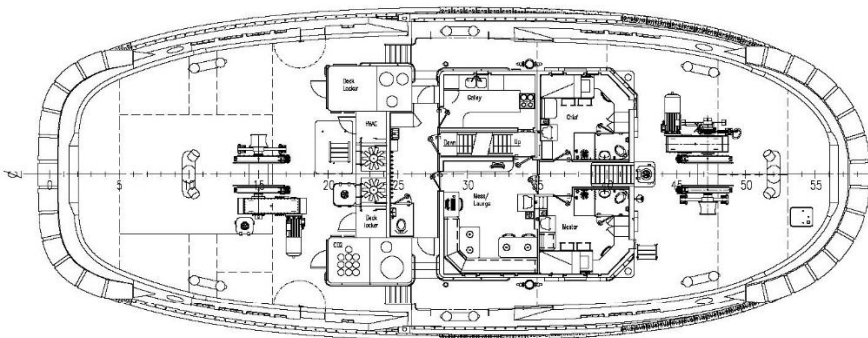
Side view



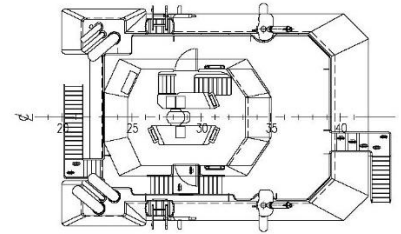
Front view



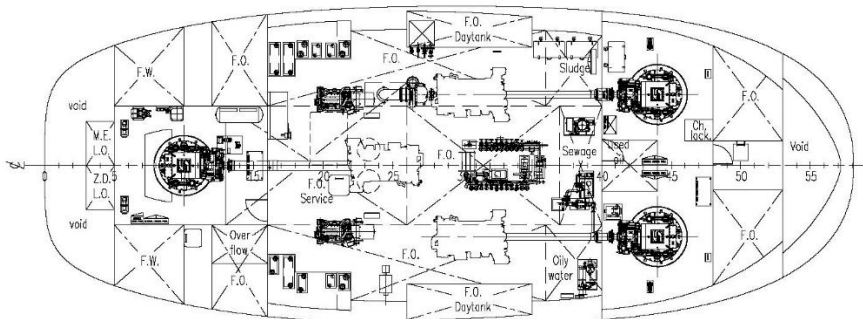
Main deck/Forecastle deck



Bridge deck/Wheelhouse deck



Engine room



Lower accommodation deck

