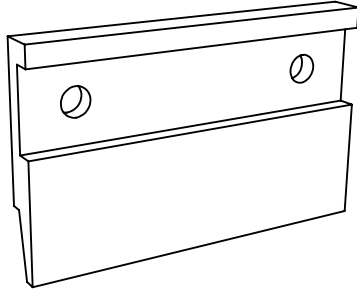


STANDARD PANEL CLEAT LOCATIONS

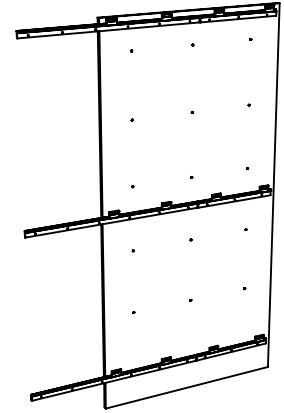
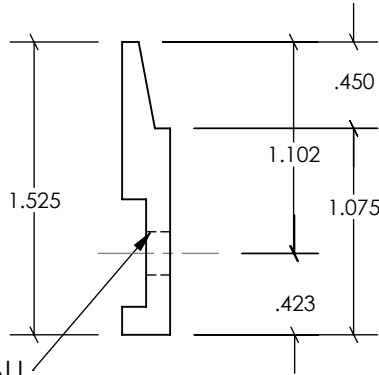
APPROVED
By dwilliams at 8:14 am, Aug 01, 2012

PANEL CLEAT



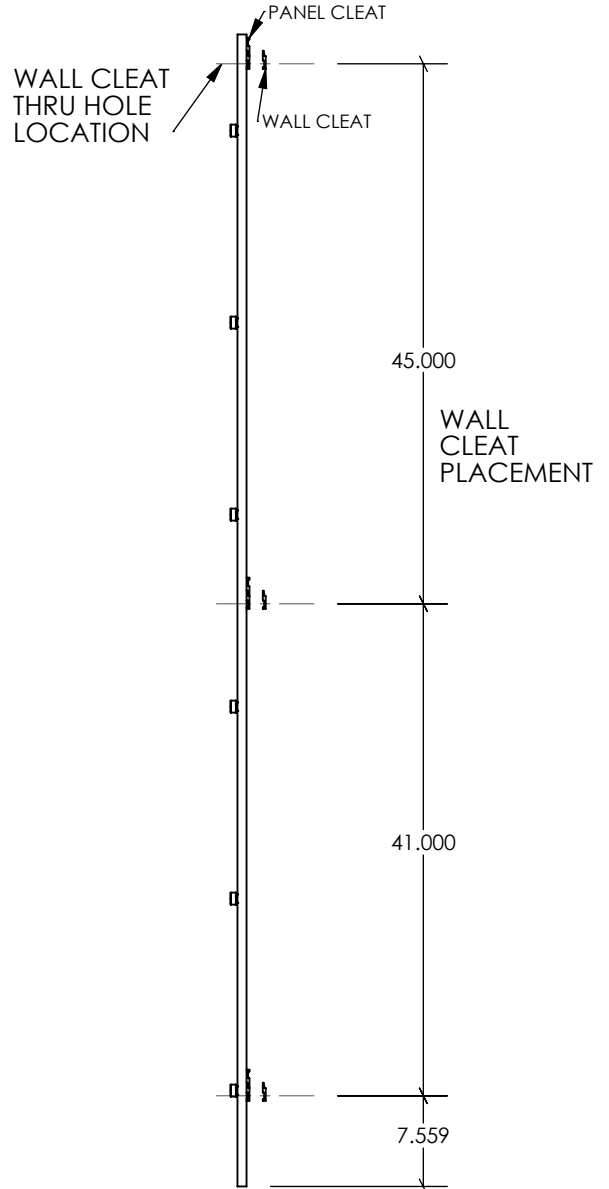
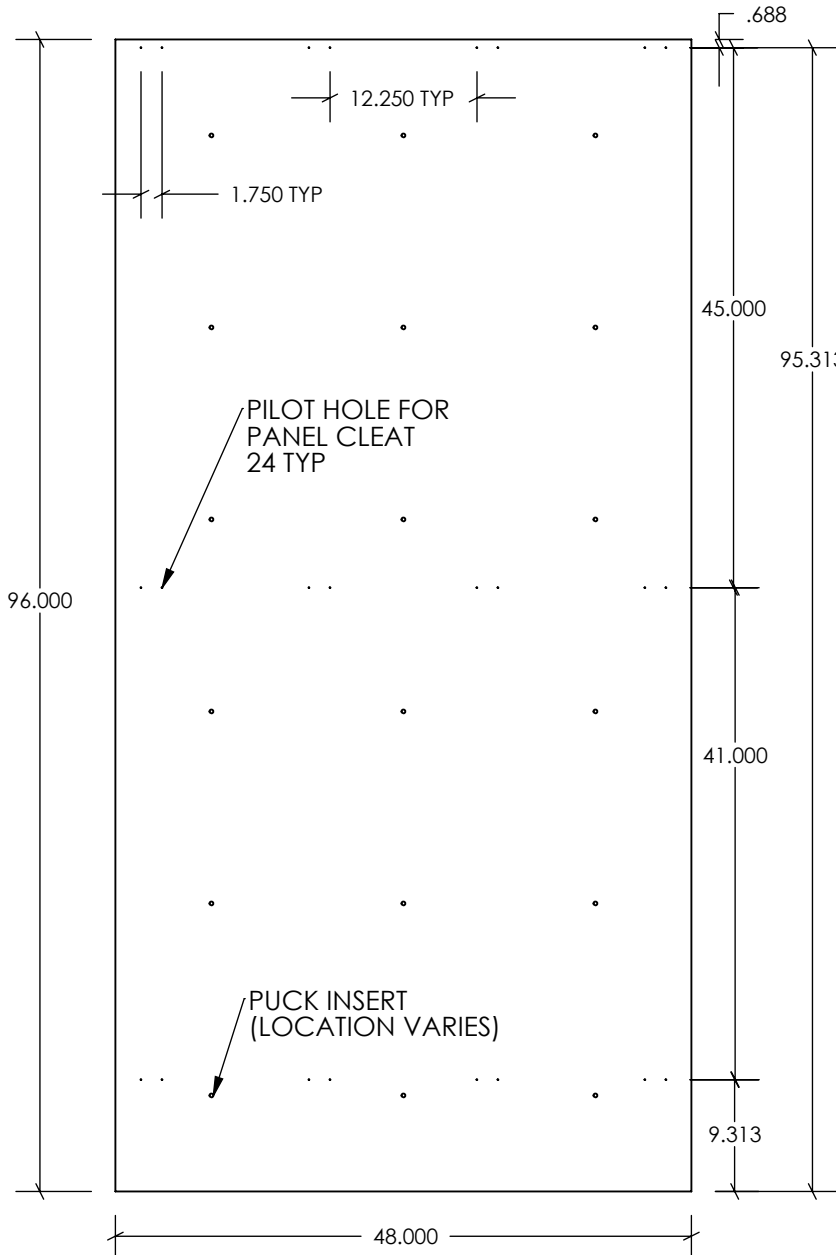
THRU HOLE
TO ATTACH TO WALL

WALL CLEAT



INSTALL 45" WALL CLEATS IN AN
OVERLAPPING PATTERN BETWEEN
MULTIPLE PANEL CONFIGURATIONS
(DOES NOT APPLY TO SINGLE PANELS)

PANEL CLEAT HOLE LOCATIONS



B&N INDUSTRIES
650.593.4127
WWW.BNIND.COM